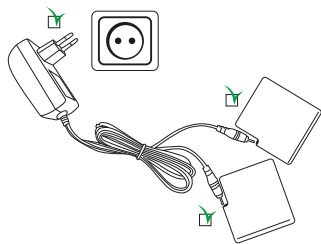
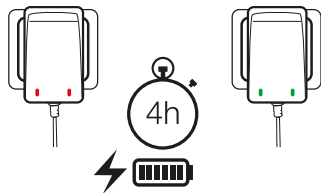


**Tugga**

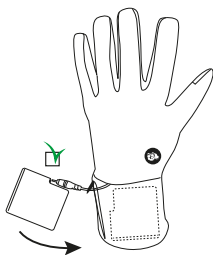
1



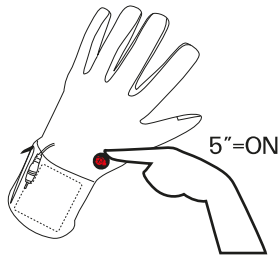
2



3



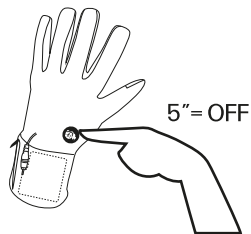
4



5



6





TG100 • TG110 • TG120  
TG130 • TG140 • TG150

ES

EN

DE

FR

SV

RU



## instructions manual

**important instructions:  
keep for future use.**

## Battery Charging

AC 100-240V charger and two batteries of lithium ion high-performance 2700mAh 7,4V with no memory effect that allow more than 1000 charge cycles (Fig. 1) are supplied.

The charger has two connectors for charging and two LED indicators to know the charging status: Red, meaning charging, and green, charging completed. The charging time of the battery is about 4 hours (Fig. 2).

The device must only be used with SAP-18W01-12 08408 EU transformer supplied.

The device must only be powered with very low safety voltage corresponding to what it is marked in the device.

## First steps

Open the zipper on the pockets of gloves. Connect the battery with the connector inside the pocket. Insert the battery and reclose the zipper (fig. 3).

## Temperatures and autonomy

Green mode (low temperature) 45°C, 7h autonomy

Orange mode (average temperature) 50°C, autonomy 5h 30'

Red mode (high temperature) 60°C, autonomy 3h 30'

NE

## Instructions Manual

Press the button for 5 seconds and it will turn red intermittently. The glove will activate warm mode (fig. 4). This process will last 6 minutes, after which the button will be set at red mode (high temperature). To cancel the preheating mode, press the button again.

To switch to another temperature mode, press the button (fig. 5) once to switch to orange mode (average temperature) and a second time to green mode (low temperature).

To turn off the heating, press the button for 5 seconds (fig. 6).

## Maintenance and storage



15-30°C

Hand wash gloves at temperatures between 15°C and 30°C. Before that, remove the batteries from glove compartments and zip up to protect the connections. Do not allow the switch or the control unit get wet during washing. The cable must be positioned so as to prevent water from entering the switch or the control unit during drying.

Always disconnect the battery when the gloves are not going to be used for a long period of time. Recharge the batteries when planning to use the gloves again. Let the appliance cool before folding for storage.

The conservation of gloves, batteries and charger, must be done in a dry, cool place.

Do not bend the unit by placing objects on top during storage.

## Security

This device can be used by children aged 8 years and above and people with reduced physical, sensory or mental



abilities or lack of experience and knowledge, always under supervision or training on appropriate use of the appliance safely and the dangers implying. Children must not play with the device. Cleaning and maintenance by the user must not be made by children without supervision.

Examine the device often looking for signs of wear or damage. If there are such signs or if the device has been improperly used or not working, return to the distributor before reconnecting.

This device is not intended for medical use in hospitals. It must not be used by heat-insensitive and other highly vulnerable people who are unable to react to overheating. Children under three years must not use this device because of its inability to react to overheating. This device must not be used by children unless the controls have been preset by a parent or guardian, or unless the child has been properly instructed on how to use the controls safely.

## Recycling of batteries

Model TG500 battery Li-ion is supplied.

Only use the battery model supplied. Do not install under any concept non-rechargeable batteries.

The battery must be removed from the device before being eliminated, for safety disposal.

If the battery leaks or is swollen, it must be discarded immediately.

For proper treatment of used batteries, please observe the applicable rules for collection, according to your national legislation and the Directives 2002/96/EC and 2006/66/EC. By disposing these products and batteries correctly, you will help to save valuable resources and prevent any potential negative effects on human health and the environment that otherwise could occur due to improper handling of waste.

For more information about collection and recycling of old products and batteries, please contact your local municipality, your waste disposal service or the shop where you purchased the items.



**Read the instructions**



**Not usable by very young children  
(0-3 years)**



**Do not use folded or bended**



**Do not insert needles**



**15-30°C**

**Hand washable**



**Class III device**

**Charger**

Rated voltage: 100-240V~

Frequency: 50/60Hz

Power: 25W

**Battery**

Charging voltage: 8.4V ===

Power: 8.5W

Electric charge: 2600mAh

**Glove**

Rated voltage: 8.4V ===

Rated power: 8.5W

