



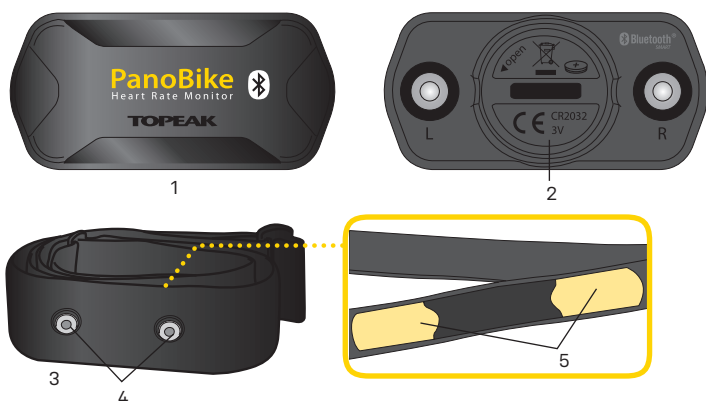
# PANOBIKE HEART RATE MONITOR

## User's Guide



Sync to PanoBike App and other Apps with *Bluetooth*® Smart (BLE 4.0) connection program.

GB



1. Heart Rate Monitor Sensor
2. Battery Cover
3. Chest Strap
4. Chest Strap Buttons
5. Electrode areas

### SPECIFICATION

**Tech:** *Bluetooth*® Smart (BLE 4.0) super low energy technology

**Fit Chest:** 70-120 cm / 27.5"- 47.2"  
100-150 cm / 39.4"- 59.0"

(with optional chest strap extension)

**Battery Lifetime (approx):** 900 hours  
(2.5 yrs. with 1 hr/day use)

**Battery:** CR2032 x 1 pc (included)

**Transmission Range:** < 5 meter (16.4 ft)

**Waterproof:** IPX 5

**Operating temperature:** -10°C ~ 50°C (14°F~122°F)

**Weight:** 46 g / 1.62 oz (strap + monitor)

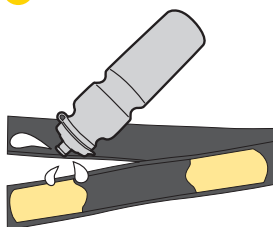
### HOW TO WEAR HEART RATE MONITOR

1



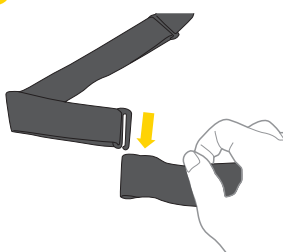
Attach the Heart Rate Monitor to the chest strap buttons.

2



Slightly moisten electrode areas on the chest strap. (If necessary)

3



Adjust strap length and wrap around chest. Insert clasp to strap end. Make sure chest strap is fastened on your body properly.

4



Insure the electrodes are pressed firmly against your skin. The sensor should be centered on your chest with the PanoBike logo in the upright position.

### TOPEAK PANOBIKE APP



Topeak PanoBike App



The ultimate cycling performance app that utilizes your smartphone's powerful *Bluetooth*® Smart capabilities and transforms it into your bike computer, personal training and health management device.

This app combines the functions of phone, cycle computer, GPS, music player, camera, and heart rate monitor (requires purchase of separate PanoBike Heart Rate Monitor) into one program that allows you to have loads of fun on your bike ride.

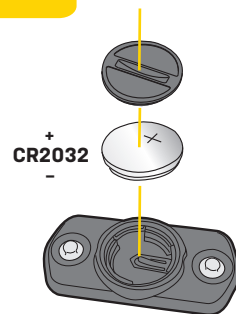
Sync to PanoBike App and other Apps with *Bluetooth*® Smart (BLE 4.0) connection program.

### CHANGING BATTERY

Operation Time up to  
**900 hr. / 2.5 yr.**

#### TIPS:

To maximize battery life, dry and detach Heart Rate Monitor sensor from the chest strap after use.



### MAINTENANCE OF CHEST STRAP

1. Detach the Heart Rate Monitor and rinse the chest strap under running water after each use and dry it with a soft towel. Never use alcohol or any abrasive material. Clean the chest strap with mild soap and water solution when needed.
2. Do not stretch the chest strap or bend the electrode areas sharply.
3. Do not soak, iron, dry clean or bleach the chest strap.
4. Do not twist the chest strap.
5. If you use fragrance or insect repellent on your skin, you must ensure that it does not come into contact with the Heart Rate Monitor.



Care Symbols for HRM chest strap

### WARNING

1. Do not store Heart Rate Monitor in damp environment or non-breathable material (such as sports bag), nor with conductive material (a wet towel).
2. Do not expose the Heart Rate Monitor to direct sunlight for extended periods.
3. Pacemaker users should never use this device.
4. The Sensor and hardware can be used in the rain but should not be used underwater.



\* *Bluetooth*® is a registered trademark of Bluetooth SIG, Inc.

\* iPhone is a registered trademark of Apple Inc.

\* App Store is a service mark of Apple Inc.

### OPTIONAL AND RELEVANT ACCESSORIES

PanoBike  
Chest Strap



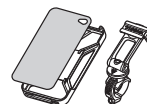
Art No. TPB-HRM03  
TPB-HRM04  
(25cm extension)

PanoBike Speed  
& Cadence Sensor



Art No. TPB-CS01

RideCase



Art No. TT9833B, TT9833W  
(works with iPhone 5/ 5S)  
TT9845B,W, TT9846B,W  
(works with iPhone 6/ 6 Plus)

### WARRANTY

2-year Warranty: All electronic and mechanical components against manufacturer defects only. Batteries are not covered under any implied warranty.

1-year Warranty: The Chest Strap against manufacturer defects only.

#### Warranty Claim Requirements

To obtain warranty service, you must have your original sales receipt. Items returned without a sales receipt will assume that the warranty begins on the date of manufacture. All warranties will be void if the product is damaged due to user crash, abuse, system alteration, modification, or used in any way not intended as described in this manual.

\* The specifications and design are subject to change without notice.

Please contact your Topeak dealer with any questions.

For USA customer service call: 1-800-250-3068

www.topeak.com

