



FULL VERSION MANUAL

CITY X



Art. No CITY X SET
(front + rear) 37498



Thank you for choosing SILVA City X bike light. SILVA City X is designed to meet the demands of today's bicyclists & commuters to ensure visibility in traffic and enough light on dark roads for a safe ride. The tough and user friendly design makes SILVA City X easy to attach and operate during all conditions.

For included CITY Rear (rear light), see separate manual.

PRODUCT OVERVIEW

SILVA City X SET bike light packaging consists of the following parts:

- Lamp unit (front)
- Bike bracket incl. 3 rubber inserts
- Integrated rechargeable battery (USB)
- USB cable
- Lamp unit (rear), see separate manual
- 2xAAA batteries
- Quick guides

BEFORE USE

CHARGING THE LI-ION BATTERY

Before first use, the battery must be charged. Remove rear part of SILVA City X by taking a firm grip of the front and press on top and bottom of the battery lid and pull the battery lid backwards to open the lamp.

Connect the micro USB port to the lamp and connect the USB connector to a USB-port. A red indicator LED will light up to show charging is in progress.

When the light turns green, the battery is fully charged. Disconnect the charge cable.

IMPORTANT: Mount the battery lid properly to ensure water protection.

MOUNTING BIKE BRACKET

The bike handlebar bracket is designed for use on handlebars with a dimension between 25 and 32mm.

Mount the bike bracket using the included rubber inserts to fit the size of your handlebar. A 3mm Allen key (hex key) is needed. Note that the fitting for the lamp body shall face upwards.

MOUNTING/REMOVING LAMP BODY

When the bike bracket is mounted, slide the lamp body into the bracket until you hear a click sound to ensure correct fastening.

To remove lamp body, push the plastic lever underneath the rear of the lamp body and slide the lamp backwards.

DURING USE

SWITCH ON YOUR BIKE LIGHT

On top of the lamp body there is a push button which controls all light modes.

A short (<1sec) press on the button gives you the following light:

1. Turns the light ON in Max mode.
2. Switches to Min mode
3. Starts over from 1

To turn OFF the light; press and hold the button for 1 second.

BATTERY STATUS INDICATION

When City X is turned OFF, the power button indicates the status of the batteries. This indication will be on for 5 seconds.

- Green light - Battery in medium-good condition
- Red - Battery needs charging

AFTER USE

MAINTENANCE

To make sure you get maximum performance from your SILVA City X bike light, clean it regularly with a damp cloth.

RECHARGEABLE BATTERY PRECAUTIONS

- SILVA City X has an internal Li-Ion battery that should be stored in a dry environment within the temperature range of -20 °C to +35 °C.
- If you would like to store your lamp for longer periods (more than 30 days) the battery should be 50% charged. Recharge at least every 6 months.
- Do not expose the lamp with battery to extreme temperatures which may cause fire or explosion.
- Do not disassemble or mistreat the battery, risk for chemical burn.
- Recharge only with a USB cable. The charger's output voltage must not exceed 5 V. Use only a CE/UL approved charger, computer or portable power supply.
- Never leave the lamp unattended while charging.

TECHNICAL SPECIFICATIONS

Bike light weight (incl battery & bike bracket): 99g

Battery type: Li-Ion

Light distance (Max/Min): 130m / 60m

Lumen (Max): 200

Burn time: Max/Min: 1h30min / TBA

Charging time: 2h30min

Water resistance: IPX6

Operative temperature range: -20 °C - +60 °C

Storage temperature: -20 °C - +35 °C

PROTECT THE ENVIRONMENT.

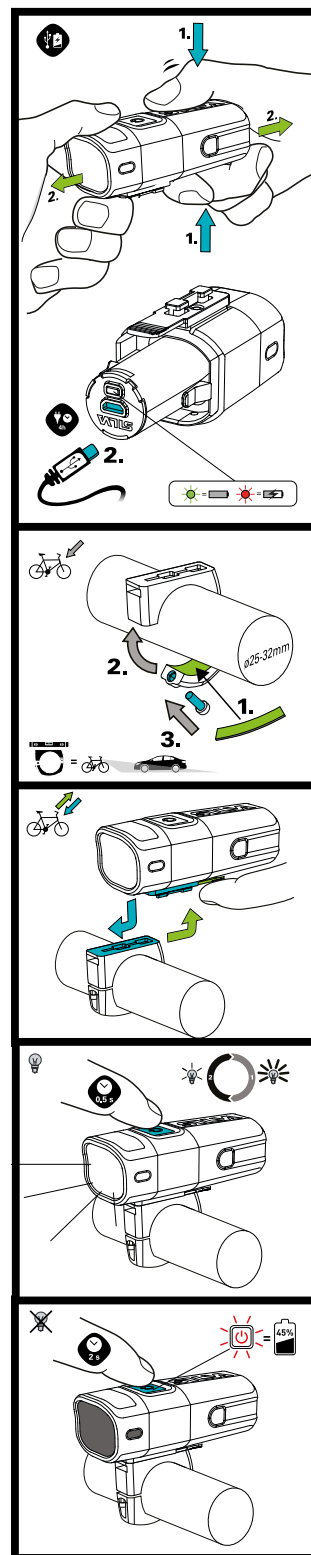
Headlamp and batteries should be recycled and must not be thrown in the regular trash. Dispose these items in accordance with applicable local regulations.

WARRANTY

SILVA warrants that, for a period of two (2) years, your SILVA Product will be substantially free of defects in materials and workmanship under normal use. SILVA's liability under this warranty is limited to repairing or replacing the product. This limited warranty extends only to the original purchaser.

If the Product proves defective during the Warranty Period please contact the original place of purchase. Make sure to have your proof of purchase on hand when returning the product. Returns cannot be processed without the original proof of purchase. This warranty does not apply if the Product has been altered, not been installed, operated, repaired, or maintained in accordance with instructions supplied by SILVA, or has been subjected to abnormal physical or electrical stress, misuse, negligence or accident. Neither does the warranty cover normal wear and tear. SILVA is not responsible for any consequences, direct or indirect, or damage resultant from use of this product. In no event will SILVA's liability exceed the amount paid by you for the product. Some jurisdictions do not allow the exclusion or limitation of incidental or consequential damages, so the above limitation or exclusion may not apply to you. This Warranty is valid and may be processed only in the country of purchase.

For more information please visit www.silva.se



Visit: www.silva.se
for more information about the
Waste Electrical and Electronic
Equipment (WEEE) Directive.