



MINI/BATT

Fi80 WIRELESS FURNITURE CHARGER



Please register online
www.miniBatt.com/register





Thank you for selecting miniBatt products.

Thank you for purchasing a miniBatt wireless charger. With this charger, you can charge any Qi-compatible device like a smartphone or other device without the inconveniences of tangled cables. Just pop your smartphone on the charging surface and your smartphone will start charging.

Parts of the product are magnetic. Metallic materials may be attracted to the charger. Do not place any credit card or other magnetic storage media near the product, because info stored on them may be erased.

Read this user manual carefully before using the product.

Also, read the user manual for the device that you connect to the charger.

Qi is a global standard that makes wireless charging possible for your device. With this Qi-compatible device, you don't need to connect any cable to charge it.



Qi and Qi mark, are the trade marks of WPC.

This product applies for all Qi standard receivers.



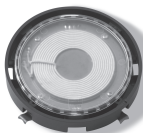


PRODUCT INTRODUCTION:

miniBatt Fi80 is a **visible or INVISIBLE wireless charger** - the king of versatility in the Wireless charging. It can easily be integrated into virtually any piece of furniture and charge all kinds of devices of 5V (Example: smartphones) and 9V (Example: tablets).

This medium power wireless charging transmitter is made in accordance with Qi standard (Qi V1.2); it inducts the receiver with one to one charging. It designs depending on A29 one coil larger area with 5-9V power supply and 5W-10W output power. Both of led and sound are set as charging indicators.

PRODUCT OVERVIEW:



Front View



Main housing

Back/side View



Cover



Micro USB to USB
cable



Stickers



ELECTRONIC FEATURES:

ITEM	PARAMETER	SPECIFICATION
Standard	Qi	Version 1.2
Charging Type	Medium Power Wireless Charging	One To One Charging
Input	Input Interface	Micro USB
	Input Voltage	5-9V
	Input Current	1.6A max
	Standby Current	<30mA
	Standby Power	<90mW
Output	Output Power(Fast charging)	5-10W
	Max Output Current	5V 1A , 9V 1.1A
Working Distance	Charging Distance	0-6mm
	Vertical Working Distance	0-12mm(Coil Spacing)
	Best Vertical Induction Distance	4mm
	Transversal Induction Distance	18mm
	Lengthways Induction Distance	18mm
	Working Area	324mm ²
Transfer Efficiency	Electronic Energy Transform Efficiency 9V	≥80%
	Electronic Energy Transform Efficiency 5V	≥60%
Electronic Parameter	Working Frequency	110-205KHz
FOD Detecting Function	Have or Not	Have
Over-Temperature Protection	Temperature	55

FINISHED PRODUCT CONFIGURATION:

ITEM	PARAMETER	SPECIFICATION
Weight	N.W.	80 g
Dimension	diameter	90mm
	Mounted size	80mm
	Thickness	24mm
Working Condition	Working Temperature	0 -42
	Working Humidity	15%-90% (No Condensation)
	Storage Temperature	-20 -70
	Working Humidity	15%-90% (No Condensation)



PARTS LIST (INCLUDED IN THIS PACKAGE):

- Wireless charger	1 PCS
- Cover	1 PCS
- Micro USB cable to USB cable	1 PCS
- Sticker	2 PCS
- User Manual	1 PCS

SAFETY INFORMATION:

- Never open or repair the device by yourself. It should only be done by an authorized specialist.
- Do not install the device under an electrical conductive surface. Never use the device if it is damaged or wet.
- Observe a sufficient distance from warm or wet elements.
- Do not use the device outdoors.
- Remove dust and what residues from the milled hole before installation.
- Make sure that while charging no metal parts are between the **Fi80** and the charging device.
- Make sure that all electrical connections and supply cables connected to other devices are in accordance with safety guidelines and with the instruction manual.
- Pay attention not to overcharge the power sockets and supply cables, it could cause fire or electric shock.
- Keep all parts out of reach of children.
- Avoid strong shocks or impacts which could damage the electric circuits.
- Never replace damage power supplies yourself! Disconnect the devices and contact a specialist.
- The power adapter used in conjunction with the wireless charge must be a **SELV type** (Safety Extra Low Voltage).



Maintenance

The device is maintenance-free, so please do not open it. The warranty becomes void if the device has been opened. Clean the device externally with a soft, dry brush or cloth. Please remove all current supplies before cleaning.

INSTALLATION:

miniBatt Fi80 can easily be integrated into virtually any piece of furniture. This charging station can be seamlessly installed for new furniture by the manufacturers, or it can be installed in any existing piece of furniture. Just take out the existing cable through-hole cover from your desk and insert the charging station into the hole. Or in case there is no hole, make room for the miniBatt Fi80 Wireless Charging Station in the surface of the desired piece of furniture, and cover it up with our stylish miniBatt Fi80 Cover.

Any installation project would require the right tools such as: drill bit or router and screwdriver.



Screwdriver



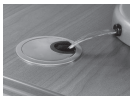
Ø 80 mm drill bit



Installation when the hole is already done on the desk:

miniBatt Fi80 is made to cover any \varnothing 80mm furniture standard through hole.

1. Take out the existing cable through-hole cover from your desk.
2. Insert one end of the cable into the input port of the **Fi80** wireless charger.
3. Integrate the **miniBatt Fi80** on the desk hole.
4. Plug in the power adaptor into the power outlet.
5. Put the **miniBatt** cover.



1. Existing hole \varnothing 80 mm



2. Wireless Charger



3. Micro USB
to USB cable



4. Cover

Cover \varnothing : 90 mm / Hole \varnothing 80 mm / Height: 2,5 mm

Watch video at YouTube if needed.

<https://www.youtube.com/watch?v=P91eoqnT9TQ>





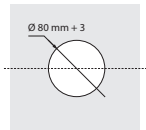
Installation when you have to do a new hole on the surface:

There are different ways of installing the charger when you have to do the hole on the surface: **Option 1:** Doing a hole on the table. **Option 2:** "Invisible Installation": countersink up to 4,5 or 5 mm of the surface.



Option 1: Doing a hole on the table:

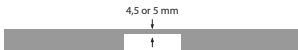
1. Measure the exact place where you want to have the Wireless Charging Station.
2. Do a through hole of $\varnothing 80\text{mm}$.
3. Insert one end of the cable into the output port of the charger.
4. Integrate the wireless charger into the hole.
5. Plug in the power adapter into the power outlet.
6. Put the **miniBatt cover**.





Option 2: INVISIBLE installation:

1. Measure the exact place where you want to have the Wireless Charging Station.
2. Do a hole of \varnothing 80mm up to 4,5 or 5 mm of the surface.



3. Insert the **miniBatt Fi80** into the hole from below and screw it.
4. Insert one end of the cable into the input port of the **Fi80** wireless charger.
5. Plug in the power adaptor into the power outlet.
6. Put the sticker on the desk to indicate the exact charging area.





USER GUIDE:

Switch on and charging:

1. After doing the installation, be aware the power adaptor is plugged in into the wall socket.
2. Just place the smartphone on the wireless charging area.
Option 1: on the cover. **Option 2:** on the sticker.



OPTION 1:
With Cover



OPTION 2:
Invisible

OPERATING INDICATOR STATUS:

WORKING CONDITION

LED AND BUZZER

Standy for charging	Red lighting 2s
Charging status	Lighting blue LED
Detecting Receiver Normally	A Short Sound(0.5s)
FOD Alarm	Sound with 1Hz , blue led lighting with 1Hz

When working normally, there will be a short sound of 0,5 seconds and a blue LED is on.

ADDITIONAL INFORMATION:

Applicable devices:

- Devices with build-in wireless charging receiver.
- Devices with reserved wireless charging interface beside its battery.
- Devices connected to a wireless charging receiver ilike a protection case or miniBatt RING.

Note: All devices must be Qi Standard.



- Please use a 5V/2A adaptor or QC2.0 adapter and good quality digital cable to ensure charging effect.
- Please keep the charger away from water or other liquid.
- If you need to clean the charger, please make sure it is not connected to power supply.
- Working temperature: 0 ~ 42 °C
- Working humidity: 15% ~90% (no vapor condense)
- Keep the device dry. Precipitation, humidity and all types of liquids or moisture can contain minerals that corrode electronic circuits. If your device gets wet, allow the device to dry.
- Use the charging station for intended purposes only. Never use a damaged charger. The charging station should only be used at normal indoor conditions.
- Do not attempt to charge a device having a damaged, cracked or open battery case or a device that is not compatible with Qi.
- Do not use the device in dusty or dirty areas. Moving parts and electronic components can be damaged.
- Do not expose the device in high or low temperatures. The device can be damaged.
- Do not attempt to open the device. Unauthorized modifications may damage the device and violate regulations governing radio devices.
- Do not drop, knock, or shake the device. Rough handling can break internal circuit boards and mechanics.
- Only use a soft, clean, dry cloth to clean the surface of the device.







MINI/BATT

WARRANTY AND SUPPORT INFORMATION



Please register online
www.miniBatt.com/register



Thank you for selecting miniBatt products.

IMPORTANT!

Please register online: www.miniBatt.com/register

www.miniBatt.com/register

Please retain the receipt as proof of purchase and write down the information below in case you need to obtain support information.





PRODUCT WARRANTY

MINIBATT TECHNOLOGIES HK, LTD (“MINIBATT”) offers a limited product warranty on hardware for two years from the date of purchasing.

Products repaired or replaced under warranty shall be subject to the product warranty remaining for the original products that are repaired or replaced.

Defects in material or workmanship on a hardware product or software, covered under warranty, will be repaired or replaced with the same or functionally equivalent product by **MINIBATT**, at its discretion, free of charge under these conditions:

- (1) Obtain a return material authorization (RMA) number from **MINIBATT**.
- (2) Return the failed product to a **MINIBATT** designated repair facility with shipping charge prepaid, and
- (3) Provide **MINIBATT** with written proof of the original date of purchase, such as a dated purchase receipt.

Replacement products may be refurbished or contain refurbished materials. If **MINIBATT**, by its sole determination, is unable to repair or replace the defective product, it will refund the purchase price of the product, less a reasonable usage charge.

This warranty does not apply if, in the sole judgment of **MINIBATT**, the product fails due to damage from shipment, handling, storage, accident, abuse or misuse, or if it has been installed, used or maintained in a manner not conforming to product manual instructions, has been modified in any way, or has had any serial number removed or defaced. Repair by anyone other than **MINIBATT** or an approved agent will void this warranty.





The maximum liability of **MINIBATT** under this warranty is limited to the purchase price actually paid by the customer for the product covered by the warranty, regardless of the amount of any other direct or indirect damage suffered by the customer. **MINIBATT** makes no warranty that the software will be error free or will operate without interruption.

MINIBATT reserves the right to revise or update its products, software or documentation without notice. **MINIBATT** also reserves the right to change the terms of its limited product warranty at any time. Except as specifically provided above or as required by law, the warranties and remedies stated above are exclusive and in lieu of all others, oral or written, express or implied. Any and all other warranties, including implied warranties of merchantability and fitness for a particular purpose, and non-infringement of third party rights are expressly excluded. **MINIBATT** shall not under any circumstances be liable to any person for any special, incidental, indirect or consequential damages, including without limitation, damages resulting from use or malfunction of the product, loss of profits or revenues or costs of replacement goods, even if **MINIBATT** is informed in advance of the possibility of such damages. The maximum liability of **MINIBATT** under this warranty is limited to the purchase price actually paid by customer for the product covered by the warranty. Customer's purchase and usage of this product is expressly contingent upon the acceptance of the warranty terms above.



MINI/BATT



For more information, please visit the miniBatt website: www.miniBatt.com



This device complies with CE regulations and meets the requirements of the applicable European guidelines.



Electronic old device are valuable materials and do not belong in the domestic waste. If the device has reached the end of its operational life, please dispose of it in accordance with the applicable regulatory requirements of the local collection points. Disposal in general household waste is prohibited.



The device is compatible with the WPC Standard Spec. 1.2 "Qi". Please only use the device with the Qi compatible devices.



Use only in dry indoors locations.

Safety note:

This device complies with Part 15 of the FCC Rules. Operation is subject to the following two conditions:

- (1) this device may not cause harmful interference, and
- (2) this device must accept any interference received, including interference that may cause undesired operation.

Environmentally friendly disposal

Old electrical appliances must not be disposed of together with the residual waste, but have to be disposed of separately. The disposal at the communal collection point via private persons if for free. The owner of old appliances is responsible to bring the appliances to these collection points or to similar collection points. With this little personal effort, you contributed to recycle valuable raw materials and the treatment of toxic substances.



miniBatt Technologies (HK) Ltd.
6/F, Oriental Crystal Commercial Building
46, Lyndhurst Terrace, Hong Kong
All rights reserved miniBatt®



Designed in Barcelona
Made in China