

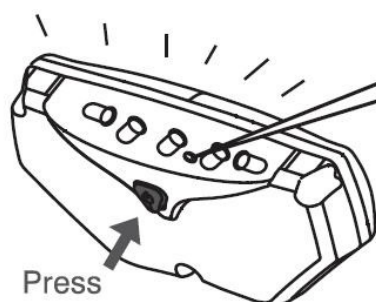


5 Super Bright LEDs Carrier Light

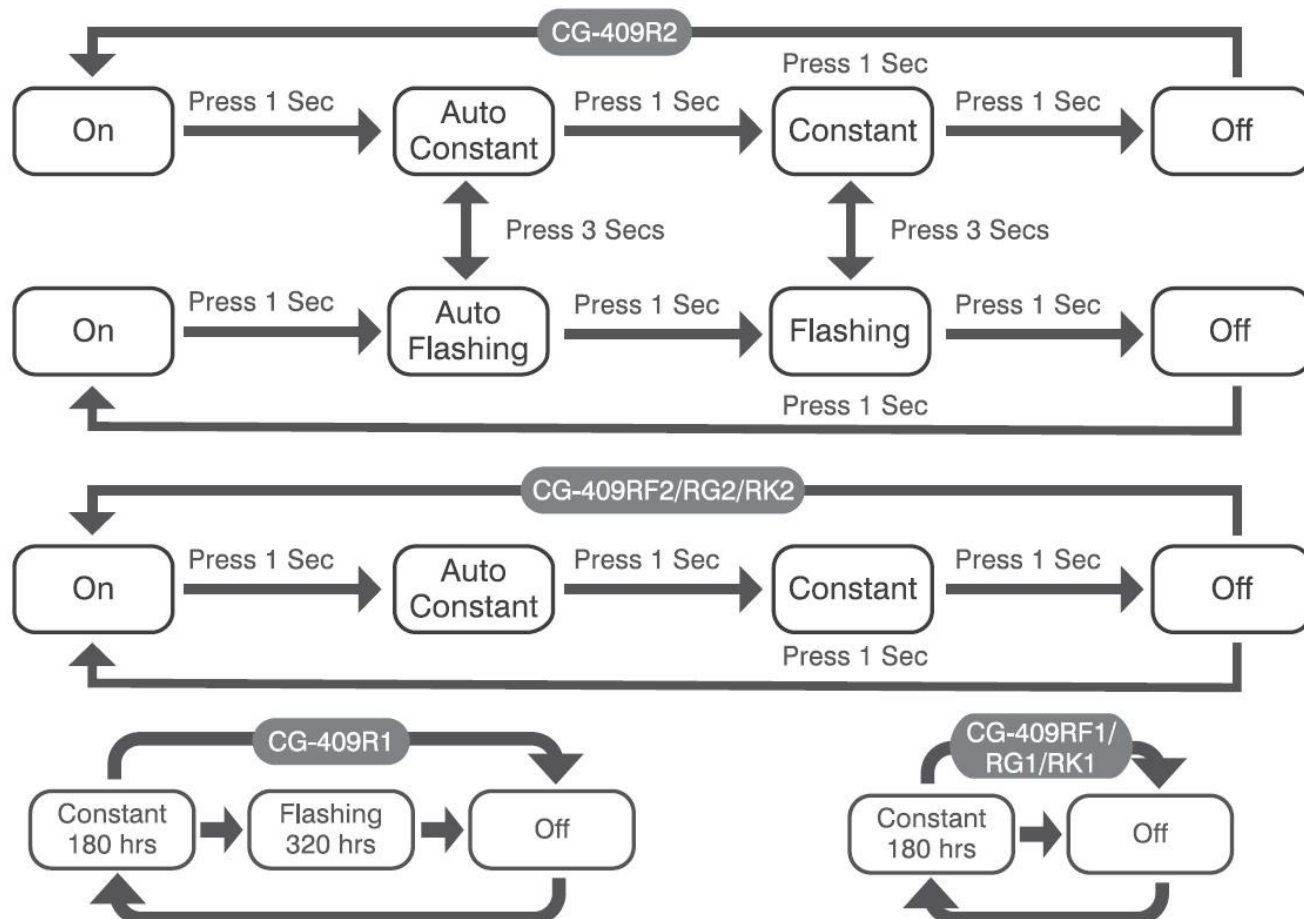
CG-409R/RF/RG/RK

TO SWITCH MODES

Press the button on the front of the light .



Slow flashing - Auto mode
Fast flashing - Regular mode
Constant - Low battery indicator



SPECIFICATIONS

Size: 120 x 60 x 30 mm
Weight: 67.5 g (without battery)

LED: 5 Red LEDs
Battery: LR6 (AA) x 2

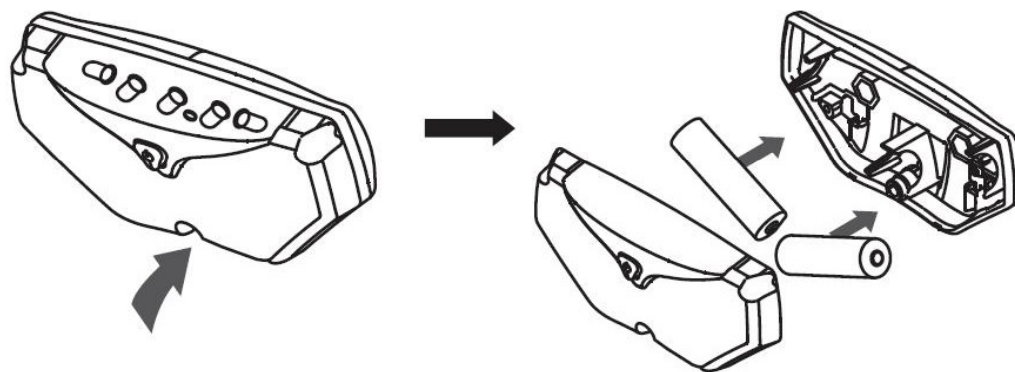


5 Super Bright LEDs Carrier Light

CG-409R/RF/RG/RK

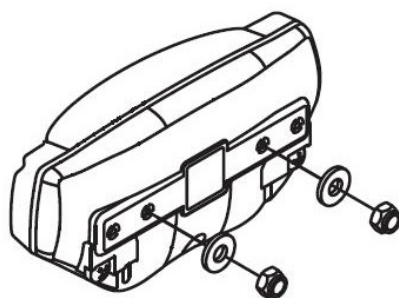
TO INSERT BATTERIES

1. Remove the screw from the front reflector and twist open the main case.
 2. Install batteries and use only the specified type of batteries.
- Be sure of the positive and negative ends are placed according to the diagram.



TO MOUNT THE LIGHT

1. Mounting on carrier rack - The light has two bolts on the back for mounting on your bike.
2. The bolts can be width adjusted according to the size you need.



Caution:

1. We recommend to remove batteries from the light during period of non-use to avoid the battery leakage.
2. For best performance, do not mix new and old batteries.
3. Carefully install batteries, insuring proper polarity.
4. For your own safety, please do not operate the controls of the product while riding.

Manufactured by Chance Good Ent. Co., Ltd.
Website: www.dlight.com.tw
A6C409R1611

