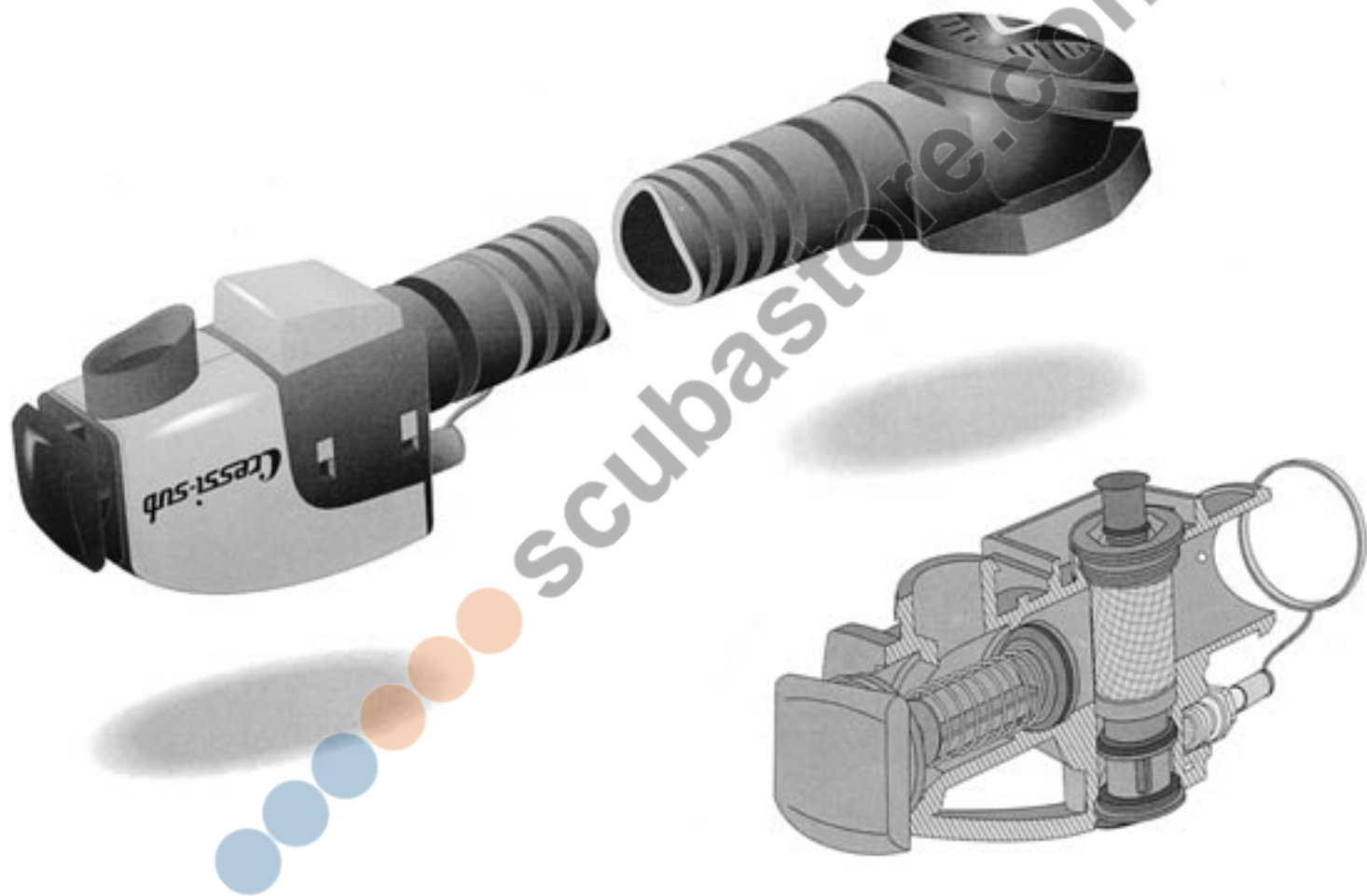


Cressi

EQUILIBRATORI
B.C.'S JACKETS



GILETS STABILISATEURS
TARIERJACKETS
CHALECOS HIDROSTÁTICOS



CRESSI-SUB JACKETS WITH ID HOSE

Congratulations on your choice! This product, which is the result of continuous research and development, is made in compliance with CRESSI-SUB quality standard, thus ensuring pleasant and absolutely safe diving.

GENERAL WARNINGS

You must be trained in buoyancy compensation from a qualified diving instructor before using this product.

The use of the device by people without qualification is very dangerous and can cause serious injury or death.

CRESSI-SUB recommends to read this manual before using the jacket.

A recognized diving qualification is always required.

INTRODUCTION

The CRESSI-SUB jackets are certified to reach a depth of 50 mt, as prescribed in the CE standard, having passed the required tests.

These devices are very important to dive with air regulator and tanks because they provide buoyancy control by inflating or deflating, thus changing the diver's buoyancy. For this reason, they are also called BCDs, that is Buoyancy Compensating Devices.

Their rapid development has known a range of very different models, and they have nowadays taken the form of a life jacket, very easy to put on.

WARNING!
THIS IS NOT A LIFEJACKET AND DOESN'T ASSURE AT THE SURFACE A HEAD UP POSITION.

COMPONENTS

All CRESSI-SUB jackets have been designed to assure a perfect fit and comfort in most situations.

The use of high quality and strong materials, such as the famous "CORDURA 1000", the high-frequency weldings and the double seams made from nylon thread assure the longest duration of the product.

Some weldings are located in a strategic position in order to control inflation and deflation in order to assure the best buoyancy.

The very comfortable and functional newly designed pockets allow to house such accessories as cameras, etc. All jackets are equipped with special lateral weight-holding pockets which, in case of emergency, allow to quickly eject weights. Depending on models, either gravity systems (automatic ejection of the weight after manual release of the safety buckle) or C-Trim systems (manual ejection of the special weight-holding bag) are used.

The special design of the jacket allows to rationally arrange all diving instruments (octopus, gauge, torches, compass...) through many buckles and springclips, making the dive easier.

BACK-PIECE

Its most important function is to provide a correct connection between the tank and the BCD, and then between BCD and diver.

A correct design is the starting point to reach the best results.

After many tests and researches, CRESSI-SUB has created a modern back-piece assuring a vertical adjustment of the back support in order to fit each waist. The newly designed handle makes it easier to carry the jacket everywhere.

You can also buy an additional strap to fasten the tank or it is possible to fasten the tank in two different positions.

INFLATOR

It is the heart of every jacket and assures inflation and deflation.

This important component consists of the by-pass, the ID hose and the deflation valve.

Designed according to the latest technologies, it has a more elegant and discreet look, matching the other BC parts.

A detailed description of the characteristics of each component is given below.

BY-PASS

It controls inflation and deflation.

This very difficult mechanical function has been made easy by CRESSI-SUB technicians through the use of modern materials.

The following figures show the maintenance work which, for safety reasons, must only be carried out by technical personnel authorized by CRESSI-SUB (see figure pag. 16).

CRESSI-SUB ASSUMES NO RESPONSIBILITY FOR ANY MAINTENANCE WORK CARRIED OUT TO THE BY-PASS BODY BY PERSONNEL NOT AUTHORIZED BY CRESSI-SUB.

The low pressure hose of the first stage is connected to the by-pass by means of a quick connector.

Inflation is controlled by push-button **1** (Fig. 1), with air coming from the hose of the first stage, or by blowing in the mouth piece.

Deflation is controlled by push-button **2** (Fig. 2) located in the lower part of the by-pass.

The form of the CRESSI-SUB by-pass has been designed to assure a safe and correct fastening and all comfortable conditions during the dive.

QUICK DEFLATION VALVE

The new deflation valve of the CRESSI-SUB inflators has two main functions:

- 1) It assures a complete and quick deflation by pulling the internal cord of the ID hose (Fig. 4).
- 2) It also operates as additional overpressure valve, an exclusive accessory against overinflation, assuring the highest safety during the jacket inflation (Fig. 3).

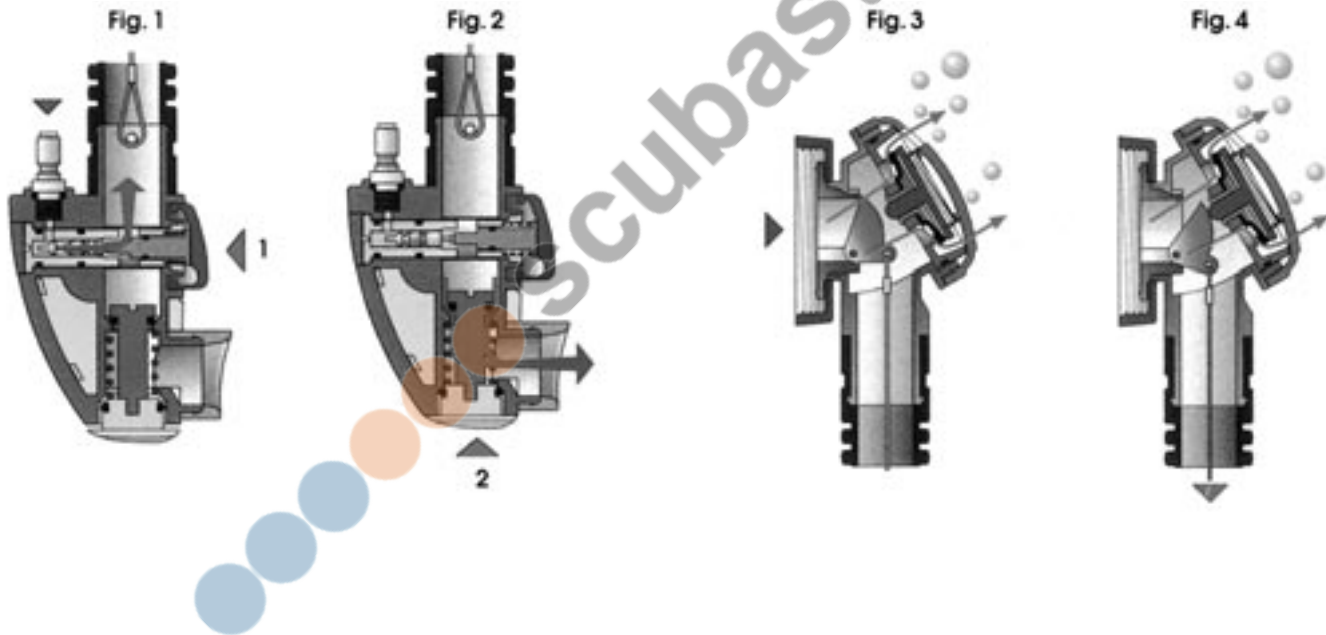
OVERPRESSURE VALVE

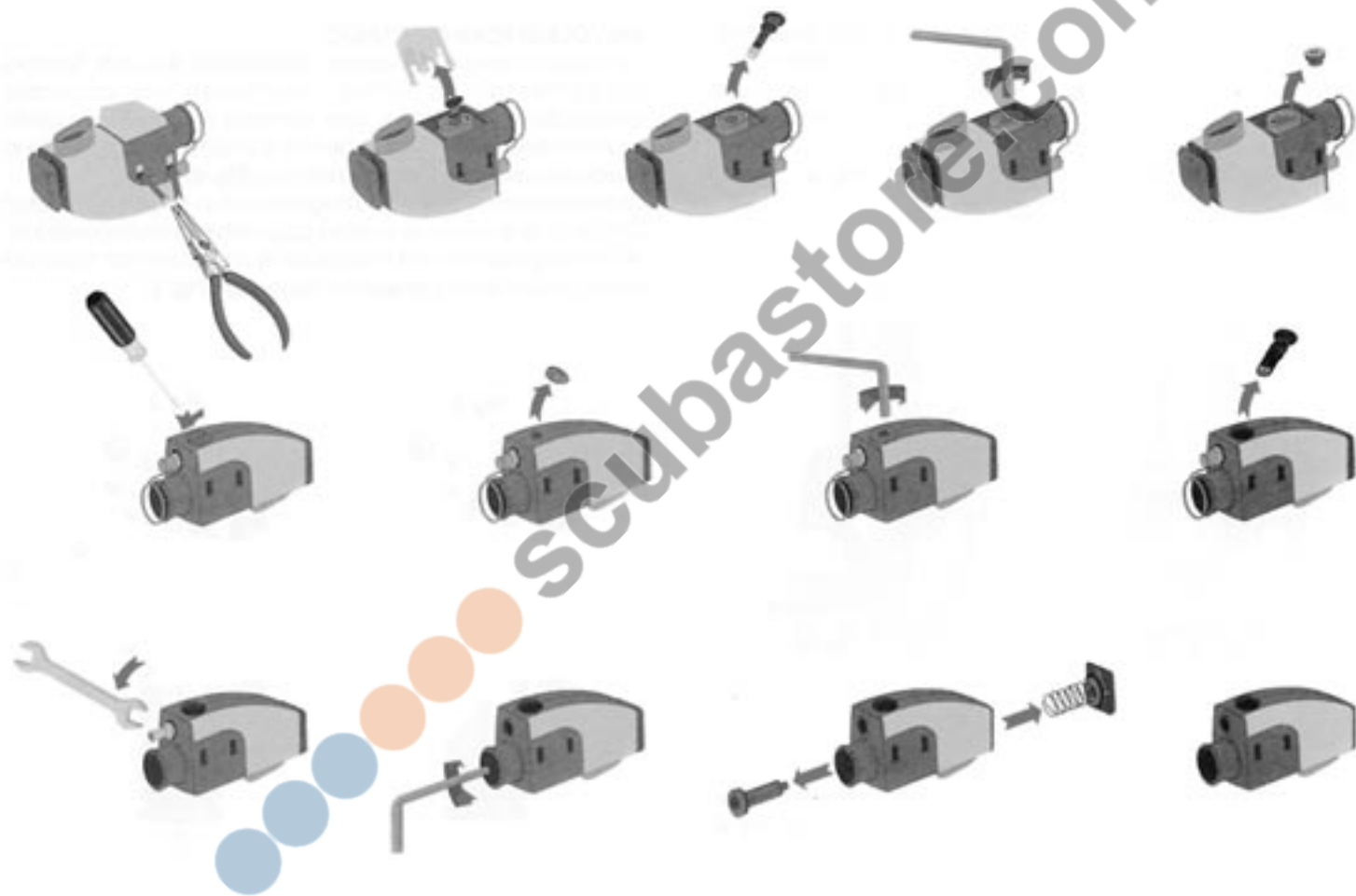
All CRESSI-SUB jackets are equipped with this valve located in both the lower and upper right part of the jacket, on its rear side. Besides controlling inflation by checking that the maximum interstage pressure is not

exceeded, this valve allows the diver to manually deflate when his/her position mainly concentrates air in the lower part of the jacket.

To operate the lower right valve, just pull the cord, by grasping the special knob which, depending on the jacket model, is located on the rear side in the lower right part or on the front side in the lower right part.

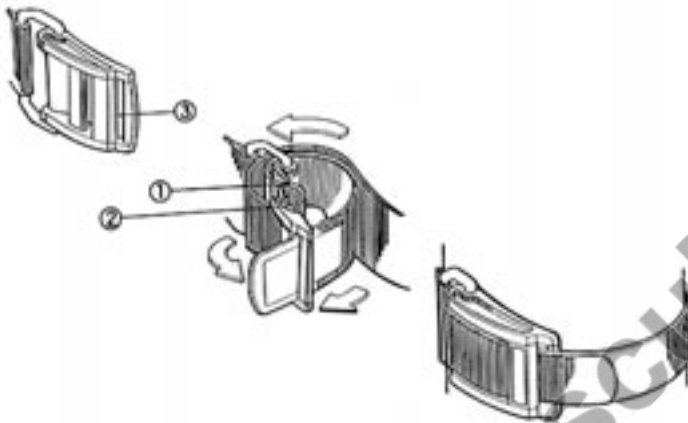
To operate the upper right valve, just pull the cord, by grasping the special knob located on the front side on the right shoulder-strap.





USE OF THE BCD - JACKET ASSEMBLY WITH STRAPS

First, you must fasten the jacket to the tank, as shown on the figure (**steps 1 and 2**), correctly putting the buckle in the strap.



WARNING - YOU MUST ALWAYS FASTEN THE STRAP WET!

Otherwise, if the strap is dry, it could stretch, when submersed, and the tank could slip out.

When fastening the jacket to the tank is important to get the upper side of the back-piece 2-4 cm under the tank deflation valves so that the **diver's head doesn't bump against the regulator**, hindering his/her swimming.

Secondly, you must connect the LP hose to the by-pass, joining it to the first stage low pressure port because the

BC has been designed to be used with an air pressure ranging from 6 to 12 bars, consequently a higher pressure would be dangerous for the diver.

The other port of the LP hose is provided with a quick connector: make sure that there is not any dirt, sand or other substances before connecting it to the by-pass.

HOW TO WEAR THE JACKET

You can wear the jacket either out of the water or in the water.

It is **absolutely necessary** to learn how to correctly wear the tanks and the jacket during the diving course.

The jacket is fastened to the diver's body with shoulder straps and a cummerbund.

The main fastening is assured by a cummerbund with abdominal strip and Freematic system that fits every waist and provides the best fastening and a rapid adjustment of the jacket to the body without compression on the chest and the waist.

An additional adjustment is provided by the adjustable shoulder-straps with large front quick-release buckles; the tank is fixed to the back-piece by means of an adjustable band, so that it is possible to adjust tanks of different diameters.

Now, once you have rapidly checked for the correct operation of the inflator, the hoses and the accessories, you are ready to dive.

OPERATION

The jacket operation is controlled by the by-pass, the deflation valve and the overpressure valves.

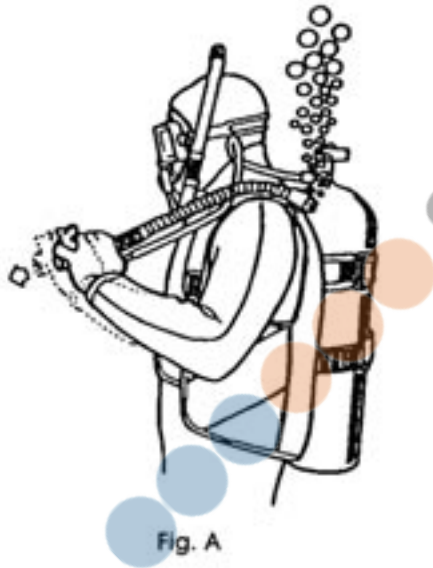
To begin a dive, you must deflate the inflated jacket

by pulling the ID hose (**Fig. A**), then using the deflation valve or the lower overpressure valve, if you descend head down.

Now, you can descend at a descending rate that increases in proportion to the water pressure compressing you.

To descend slowly you can inflate. By shortly lightly pressing the inflation button, you can modify the descent rate and then progressively adjust yourself to the increasing depth.

During the dive you can compensate buoyancy in accordance with the depth and tank lightening, due to the air consumption.



To ascend you must inflate, so that a lightly positive buoyancy can be obtained.

In this case, the ascending rate increases in accordance with the pressure and you must operate the deflation systems to compensate and avoid a too rapid ascent.

WARNING: IT IS EXTREMELY DANGEROUS FOR THE DIVER TO ASCEND TOO FAST. AVOID OVER INFLATING THE JACKET, AND ASCEND WITH A NEUTRAL BUOYANCY, CONTINUOUSLY ADJUSTING BUOYANCY.

USE OF THE EQUIPMENT AND RISK EVALUATIONS

Before using a diving equipment you must follow a recognized diving course and obtain a qualification.

You must be trained and in a good state of health.

Before every dive you must accurately consider the environmental conditions and the psychophysical state of the diver.

It is recommended to avoid the dive, when even only one of the above conditions becomes dangerous.

The environmental dangerous conditions can be the sea situation, the sea currents, the low water temperature, the poor visibility.

The physical dangerous conditions can be a bad state of health, an emotional or physical stress situation, a lacking training, tiredness, digestion.

The materials and the design of CRESSI-SUB equipment assure a totally safe use.

CARE AND MAINTENANCE

After each use, carry out the following operations:

- Remove the tank and rinse the jacket with fresh water, both outside and inside, allowing water to enter the ID hose and the bag through the deflation or the over-pressure valve.
- Drain any water left in the jacket and allow it to dry in the open air with open valves.
- Once it is completely dry, close all valves, lightly inflate it (using the mouth-inflation piece located in the by-pass) and store it in a cool and dry place.

If the device is not used for a long time, lubricate the hose connection and the collar with silicone grease and spread the ID hose with talcum powder.

The CRESSI-SUB jackets are in conformity with the EN 250 - EN 1809 standards and have been given the CE safety certification (CE 0474).

A label bearing the following information is sewn under the lateral or rear pocket:

WARNING!

THIS IS NOT A LIFE JACKET AND DOES NOT ASSURE THE DIVER OF KEEPING HIS/HER HEAD OUT OF THE WATER

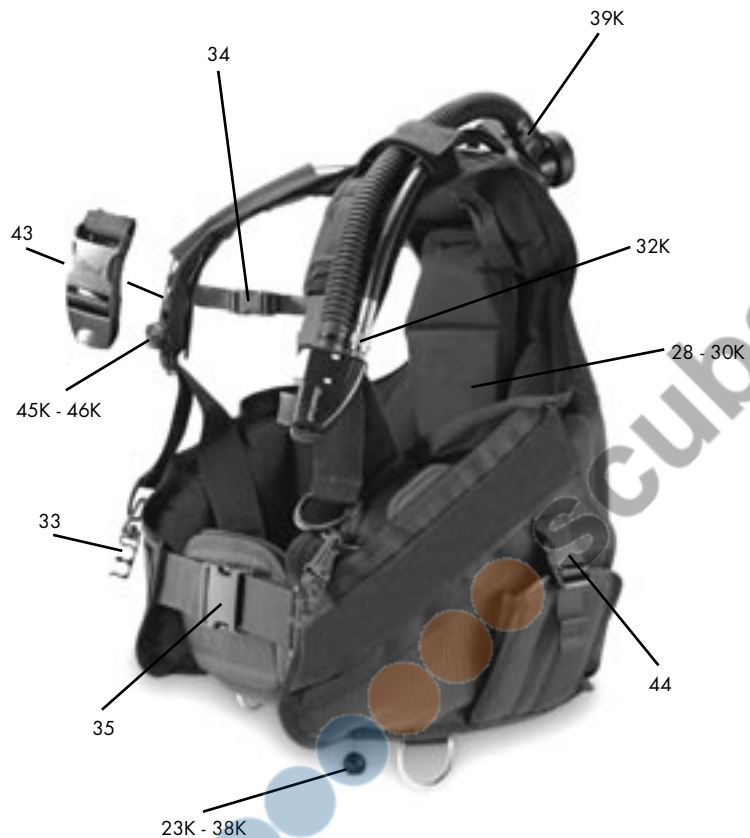
- To use this jacket, a specific course held by a certified instructor must be attended.
- In case of emergency, face up buoyancy at the surface may not be provided to all users and in all conditions.
- Before use, check for good condition and proper operation of the jacket and make sure that no holes or damages are present.
- Follow all the instructions in the Owner's Manual.
- Do not inhale gases from inside the bag.
- Do not remove from the jacket.

Model: _____ Manufacturing year: _____

Table showing the buoyancy values (expressed in Newtons) for each jacket size.

Pictogram showing the max. tank capacity in litres.





POS.	Codice / Code	POS.	Codice / Code
1	IZ 750045	24	IZ 750089
2	IZ 750046	25	IZ 750090
3	IZ 750047	26	IZ 750091
4K	IZ 750031	27	IZ 750092
5	IZ 750048	28	IZ 750099
6K	IZ 750032	29K	IZ 750037
7	IZ 750062	30K	IZ 750038
8	IZ 750056	31K	IZ 750039
9K	IZ 750054	32K	IZ 750040
10K	IZ 750033	33	IZ 750012
11	IZ 750067	34	IZ 750011
12	IZ 750068	35	IZ 760019
13	HZ 730202	36	IZ 750013
14	IZ 750069	37K	IZ 750041
15	IZ 750070	38K	IZ 750042
16	IZ 750071	39K	IZ 750043
17	IZ 750074	40K	IZ 750044
18K	IZ 750034	42K Set OR	IZ 750020
19K	IZ 750035	43	IZ 760026
20	IZ 750084	44	IZ 760025
21	IZ 750085	45K	IZ 760024
22	IZ 750086	46K	IZ 760023
23K	IZ 750036		

