



Before using the product, please thoroughly read this manual and keep it for future reference.

CAUTION

- Do not use a damaged rubber band.
- Stop your bicycle to operate the switch.
- Keep the light away from children.
- Charging, discharging, and storing in high temperatures will cause the rechargeable battery to deteriorate faster. Do not place the light inside a vehicle or near a heater.
- This product is water-resistant under normal daily use and can be used in the rain. However, do not intentionally submerge it in water.

PRECAUTIONS ON CHARGING

- We recommend using 500+mA (USB2.0) USB battery charger.
- Avoid charging in direct sunlight or in a vehicle parked under direct sunlight, and make sure to charge only when the ambient temperature is between 5 and 40°C (41°F and 104°F).
- Before charging, be sure that no dust or other foreign objects attach to the USB plug.
- Do not subject the light to vibrations while charging.
- When your PC is in sleep state, the unit cannot be charged.
- Once charging is complete, be sure to disconnect the USB plug.
- Charging and lighting times are approximate values, and will vary by environmental and user conditions.
- If the illumination time is significantly reduced even after proper charging, the rechargeable battery may be nearing the end of its service life. Dispose of the battery as described in "PRECAUTIONS ON DISPOSAL".

STORAGE PRECAUTIONS

Do not store the light when fully charged. When the light will not be used for a long period of time, make sure the battery is almost empty and the storage location is not hot or humid.

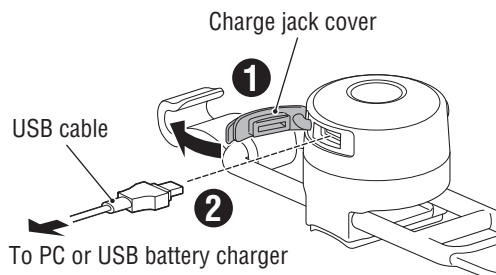
In addition, charge the battery for about 10 minutes every six months.

PRECAUTIONS ON DISPOSAL

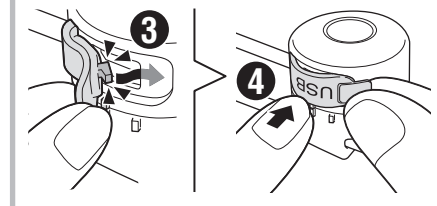
When disposing of the light unit, remove the internal rechargeable battery and dispose of it according to local regulations.

ENG

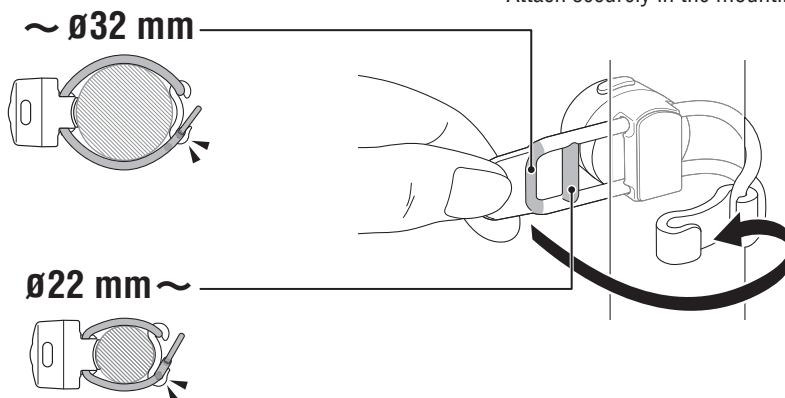
1 HOW TO CHARGE



HOW TO CLOSE THE CHARGE JACK COVER



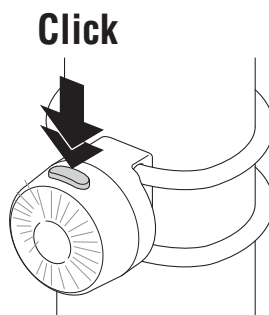
2 HOW TO MOUNT



Attach securely in the mounting position.

3 HOW TO USE

The light will turn on in the lighting mode previously selected.



Press and hold

OFF ↔ ON

Click

Lighting mode switch

Constant

Approx.
2.5 h

← Click →

Flash

Approx.
10 h

SPECIFICATIONS

Battery : Rechargeable lithium-ion battery (80 mAh)
 Temperature range : 14 °F – 104 °F (-10 °C – 40 °C)
 Dimensions/weight : 1-7/64" x 1-7/64" x 1-1/16" (28 x 28 x 27 mm) / 0.63 oz (18 g) (Including batteries)
 * The specifications and design are subject to change without notice.

SPECIFICATIONS

5441621



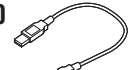
Rubber band and Hook

5442560



Attachment band

5342730



USB cable (MICRO USB)

LIMITED WARRANTY

2-year Warranty: Light unit only CatEye products are warranted to be free of defects from materials and workmanship for a period of 2 years from original purchase. If the product fails to work during normal use, CatEye will repair or replace the defect at no charge. Service must be performed by CatEye or an authorized retailer. To return the product, pack it carefully and enclose the warranty certificate (proof of purchase) with instruction for repair. Please write or type your name and address clearly on the warranty certificate. Insurance, handling and transportation charges to CatEye shall be borne by person desiring service. For UK and REPUBLIC OF IRELAND consumers, please return to the place of purchase. This does not affect your statutory rights.

Please register your CatEye product on the website.
<http://www.cateye.com/en/support/regist/>

CATEYE CO., LTD.

2-8-25, Kuvazu, Higashi
 Sumiyoshi-ku, Osaka 546-0041
 Japan
 Attn : CATEYE Customer Service
 Section
 Phone : (06)6719-6863
 Fax : (06)6719-6033
 E-mail : support@cateye.co.jp
 URL : <http://www.cateye.com>

[For US Customers]
 CATEYE AMERICA, INC.
 2825 Wilderness Place Suite 1200,
 Boulder CO 80301-5494 USA
 Phone : 303.443.4595
 Toll Free : 800.5.CATEYE
 Fax : 303.473.0006
 E-mail : service@cateye.com