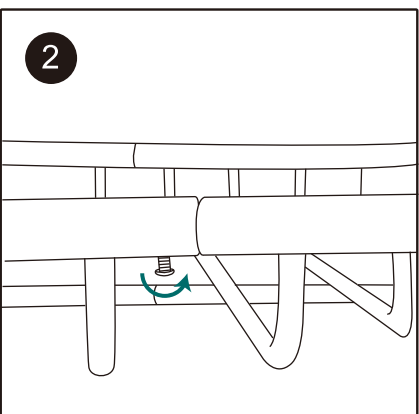
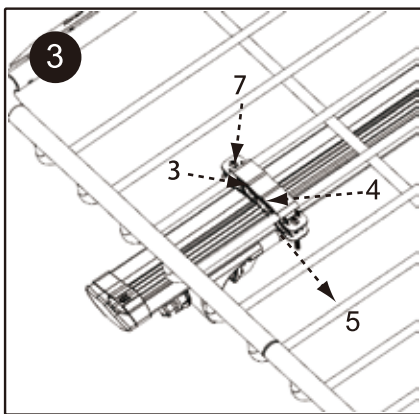


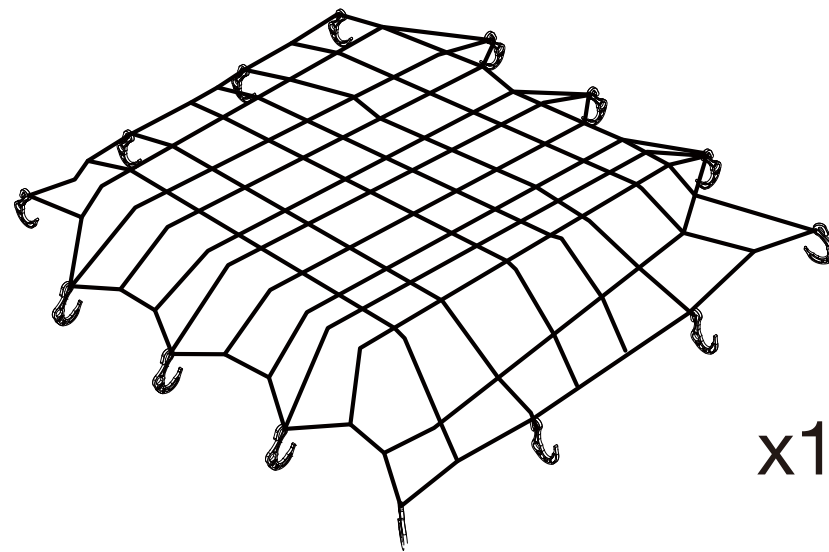
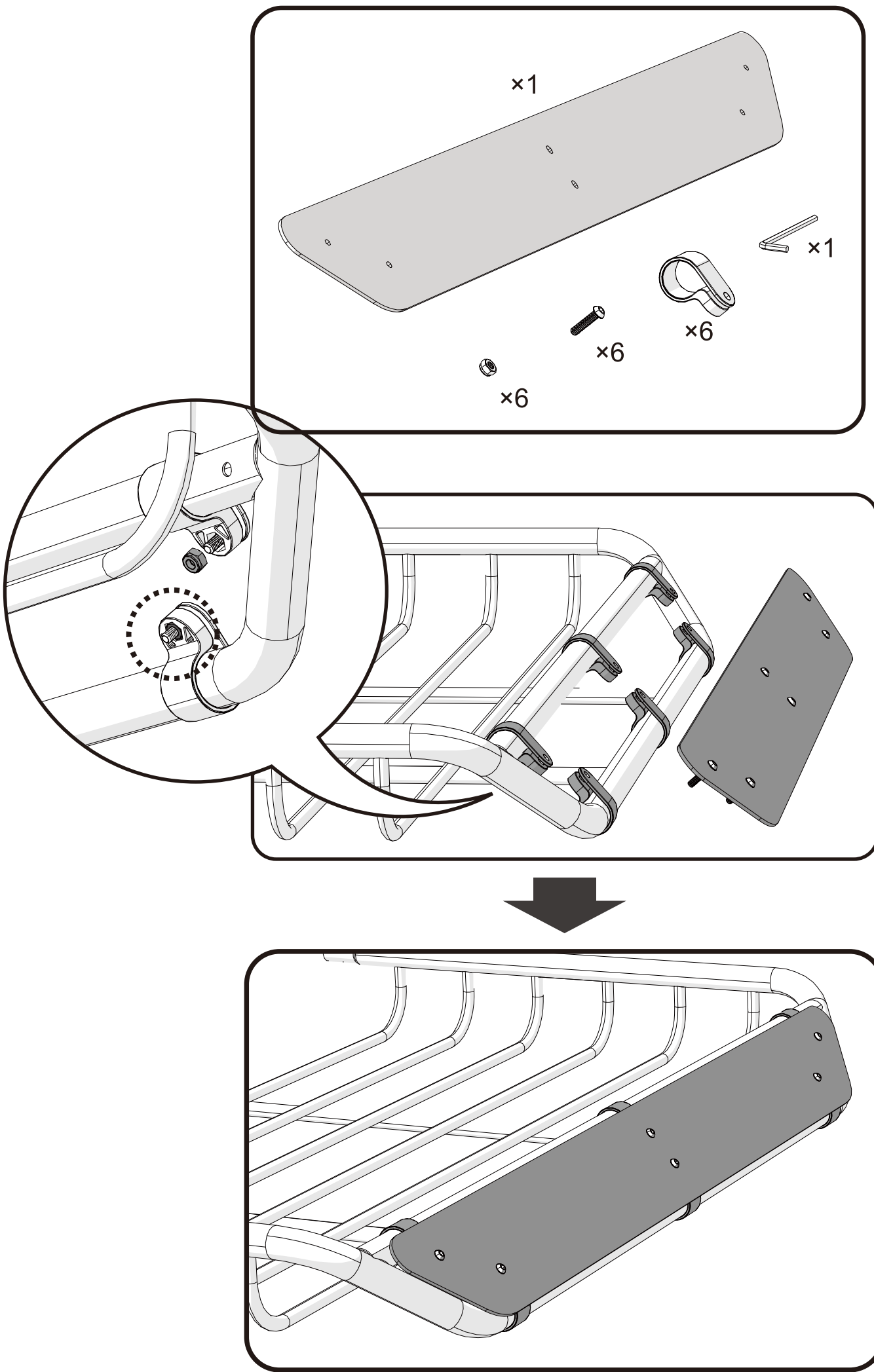
First slide front and rear basket together.



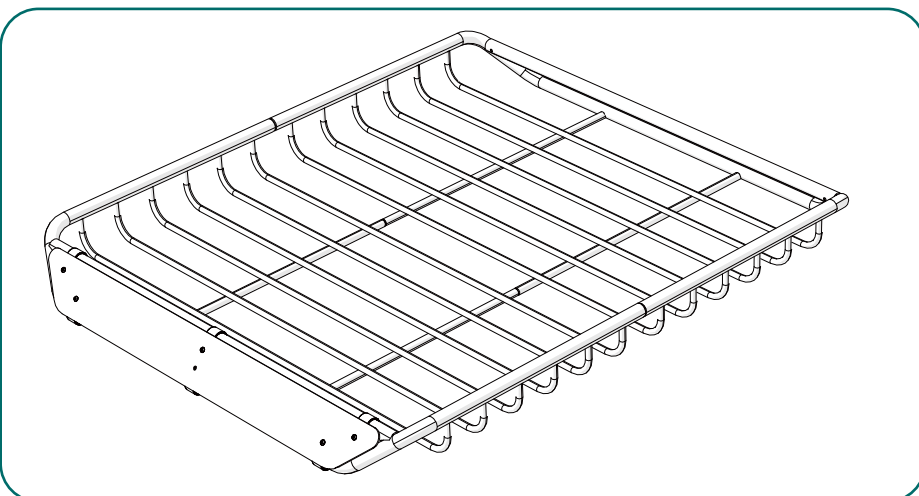
Then secure it with machine screws by provided wrench.



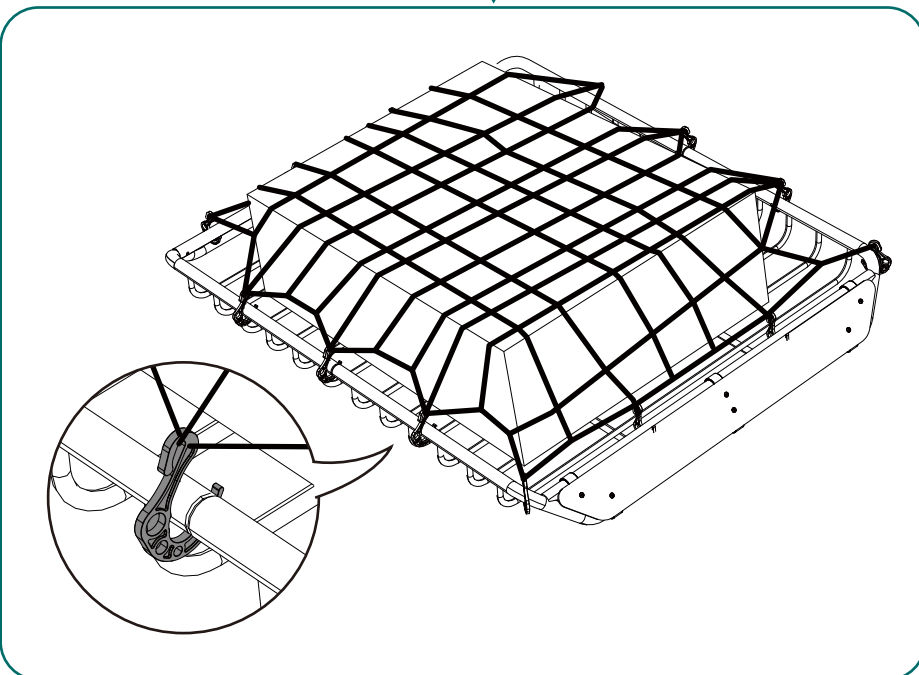
Now lock the saddle (3) onto basket. The saddle must sit on the cross bar then secure it with bracket top plate (4), bracket plate (5), and choose the bolt with appropriate length, 65mm (7) or 50mm (9) M6 screw are available, so that they will not damage the car roof.



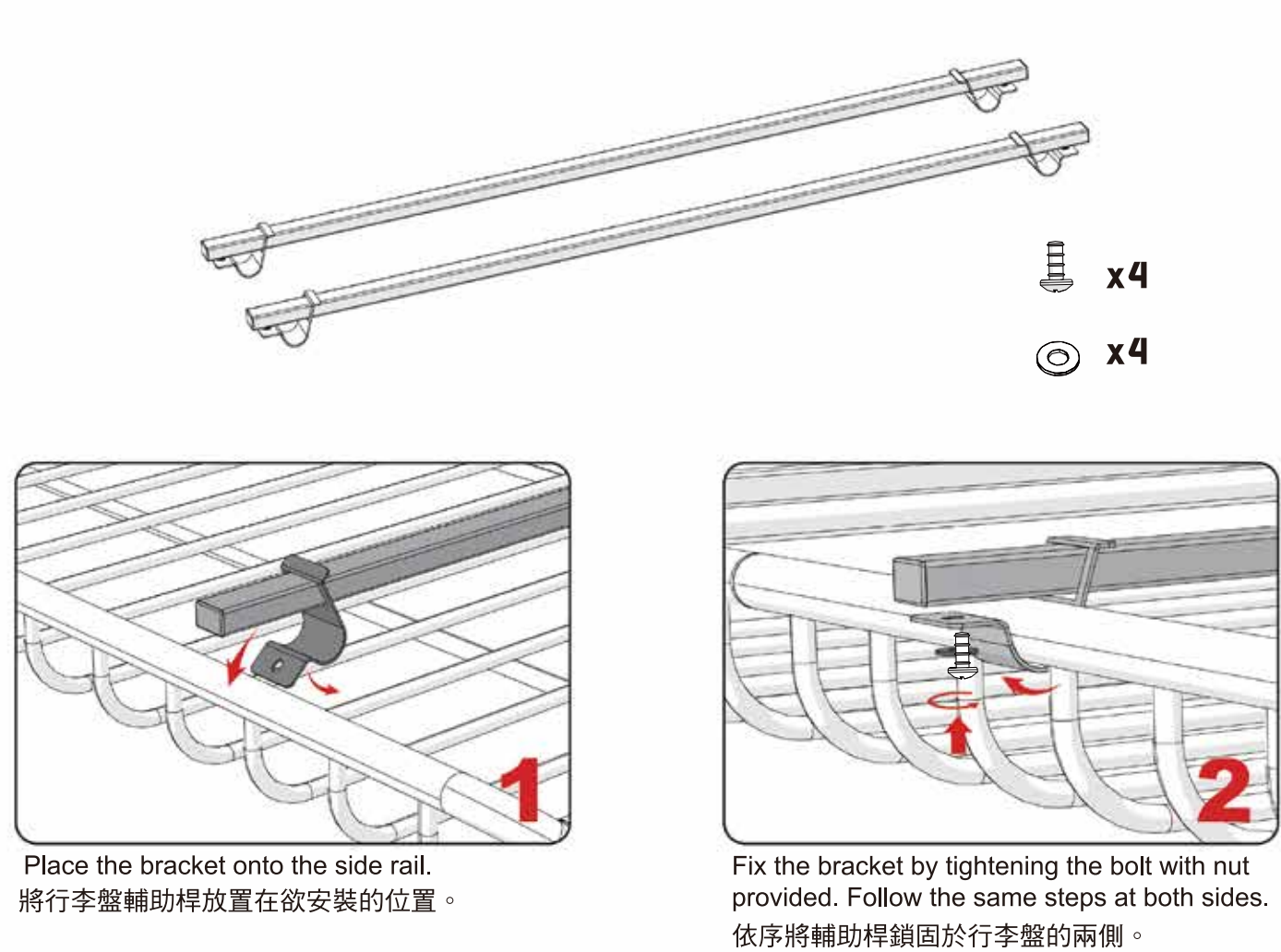
1.



2.







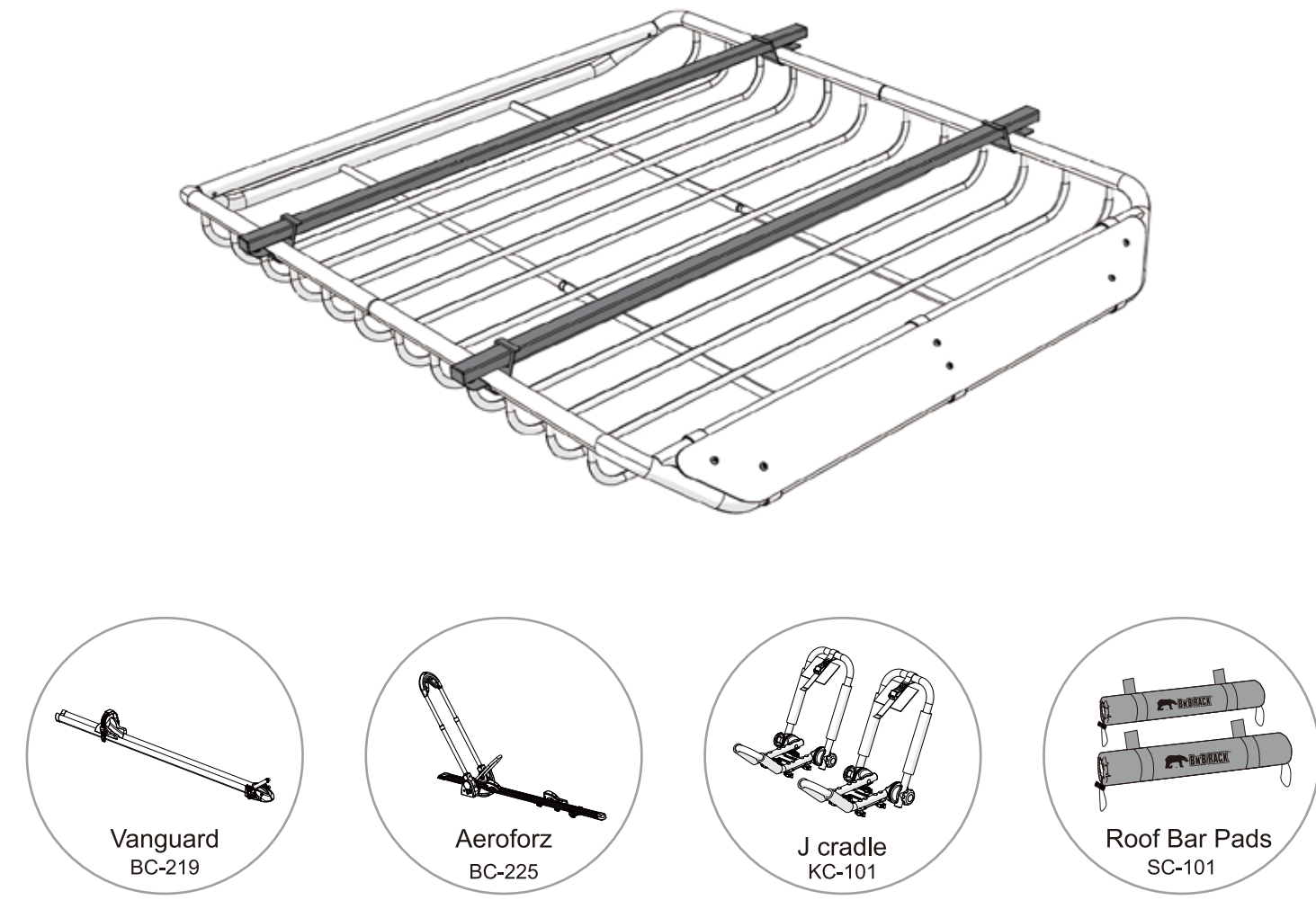
**Notice: Clamp brackets may need to be bent into position in order to fit the roof basket properly.**

注意：  
 輔助桿的固定夾具可能需要彎折以使輔助桿能適當緊密地固定在行李盤上。



If the bracket is too wide for the bolt to attach.  
 如果輔助桿夾具太寬，使得安裝不易。

Then bending the bracket allows it to properly align.  
 可以彎折夾具的弧度，以便適當地安裝。



Installation complete. Please note that the load bars should space accordingly and the maximum load is 100lbs/ 45kg. The cross bar can be compatible with different BN'B RACK's roof racks, such as Aeroforz (BC-225), Vanguard (BC-219), J cradle (KC-101) and Roof Bar Pads (SC-101).

上圖為安裝完成示意圖。  
 此行李盤輔助桿最大荷重量為45公斤，可以搭配BN'B RACK熊牌的車頂架系列商品使用。如夾胎式車頂攜車架 Aeroforz (BC-225)、前叉固定式車頂攜車架Vanguard (BC-219)、獨木舟/船拖架J Cradle (KC-101)、衝浪板/貨物置放墊Roof Bar Pads (SC-101)等。

**CAUTION**

- 1.1 The roof basket has been designed and manufactured to attach securely to a variety of vehicles with cross bars on the roof. The attachment of this cargo basket to a vehicle is beyond the control of the manufacturer. The user must therefore ensure that the roof basket is suitable for use with their particular cross bars and that any items are securely and safely attached to the roof basket.
- 1.2 During the journey, please check the attachment of roof basket to cross bar constantly and cautiously. Retighten the knobs if necessary. Make sure all the parts are in good condition. Contact authorized dealer if any part needs attention.
- 1.3 Always obey the national law about the roof basket.
- 1.4 The maximum load for this roof basket is 70kgs(150 lbs). Do not over load! The minimum distance between two cross bars is 70cm (27.5 in).
- 1.5 Reduce the speed on rough road.
- 1.6 This roof basket is designed for temporary use only, remove when not in use or during the bad weather.
- 1.7 Failure to obey the guideline in the instruction will void the warranty.