



ALPINE
RUNNING

Joe Grant knocking out the Crestone group in one push during his Tour de 14ers project, self-supported and self-propelled link up of all the Colorado 14ers, USA. Photo: Fredrik Marmsater

ULTRA TRAIL

Trails and unpaved roads, long mileage and huge elevation gain, extreme physical and mental effort: this is what characterizes the Ultratrail discipline. From distances within the marathon limits, to the classic “ultra” distances between 50 and 100 miles up to 200 and beyond, ultratrail have no limits. Protection, cushioning and comfort are the required to allow the athlete to give the best even after many hours (or days) spent running, during a race or just training.



SKY MARATHON

Intense and demanding, SkyMarathon are races between 31/43 Km with 2000m of elevation gain or beyond 4000m on whatever distance. They represent one of the most pure expression of Alpine Running. During these races the athletes run “into the sky”, facing particular technical and selective trails, even short via ferrata tracks. For this kind of running the footwear must be light, with a great performance both uphill and downhill, precise and comfortable at the same time.



SKY RACE
AND VERTICAL

A SkyRace is a race on a distance between 20/30 km and minimum 1,200m of vertical climb while a Vertical Kilometer is an uphill-only race with 1000m of elevation gain and an average 30% incline on a distance of 3,5/5 km, they are very appreciated by top athletes. These competitions, characterized by great elevation gain and short mileage are technical and spectacular, and usually very challenging for the runners. In this case, the most important characteristic of the shoe is lightness, together with precision and grip.



SPIN RS8

WEIGHT:
265g

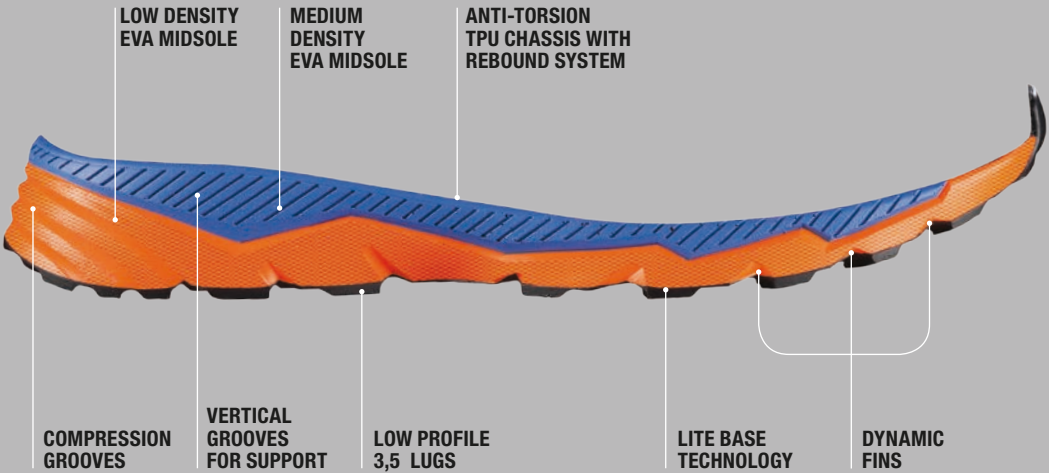


DYNAMIS LBT SOLE

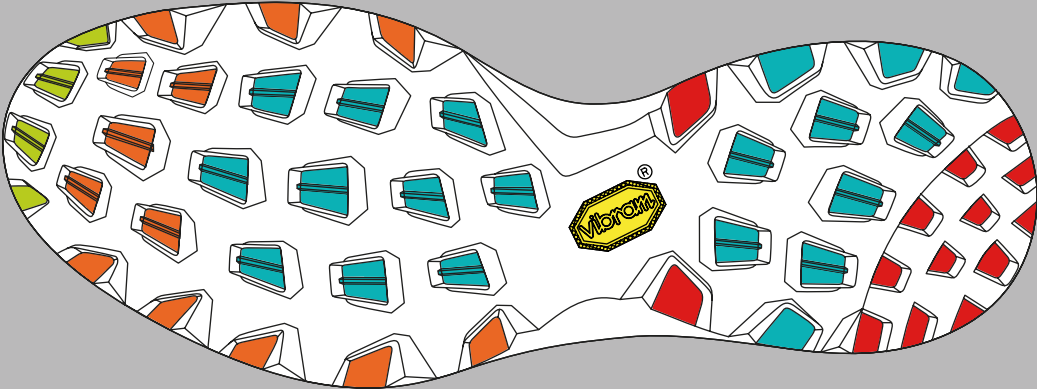


Vibram® has developed LITEBASE to drastically reduce the thickness and the weight of the rubber sole while maintaining unchanged the grip, traction and durability performance.

- Vibram® Litebase MAIN FEATURES
- The rubber base is up to 50% slimmer.
- The tread is up to 30% lighter than the traditional tread.
- The performance is unchanged in terms of traction, duration and wear resistance.



Vibram® MEGAGRIP offers excellent grip properties on both dry and wet terrains while maintaining a higher level of durability. Developed for the user who frequently encounters slippery surfaces, Vibram® MEGAGRIP is suitable for trekking and multisport as well as all season hiking and travel. MEGAGRIP offers an incomparable combination of grip and durability which helps define Vibram® MEGAGRIP as the ideal high performance rubber compound for extremely demanding activities such as backpacking, canyoneering, endure - mountain biking and skate boarding. Available in soft (65/70 Shore A) and firm (75/80 Shore A) hardness formulas, Vibram® MEGAGRIP is moldable in a variety of outsole shapes and patterns designed to meet a large range of end users needs.



ATOM S EVO OD

WEIGHT:
340g

OUTDRY®
WATER
NOT
INCLUDED

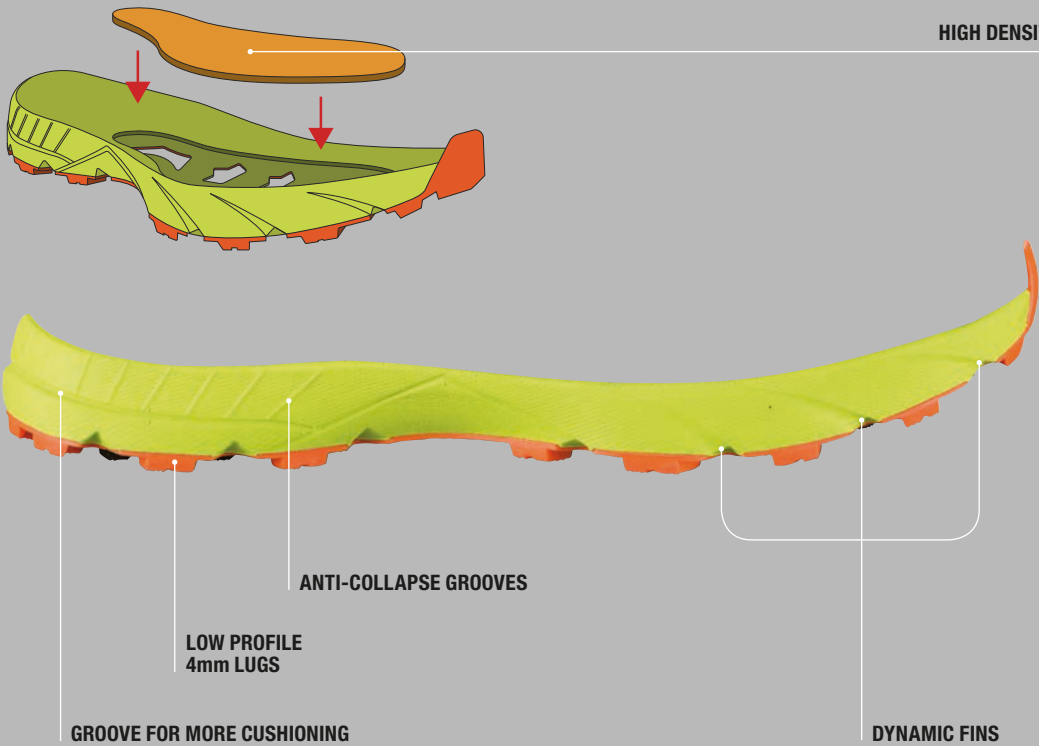
REFLECTIVE BAND

MICROTECH

HT
HEEL TENSION



FIXION



PULL TAB

ELASTIC TAPE

SOCK-FITPLUS
BY SCARPA
INTEGRATED GAITER

LACE PROTECTION
SYSTEM
LPS

EXO
EXOSKELETON
TPU ERGONOMIC
WELDED CAGE

ALPINE
RUNNING

PULL TAB

ELASTIC TAPE

SOCK-FITPLUS
BY SCARPA
INTEGRATED GAITER

LPS LACE PROTECTION
SYSTEM

REFLECTIVE BAND

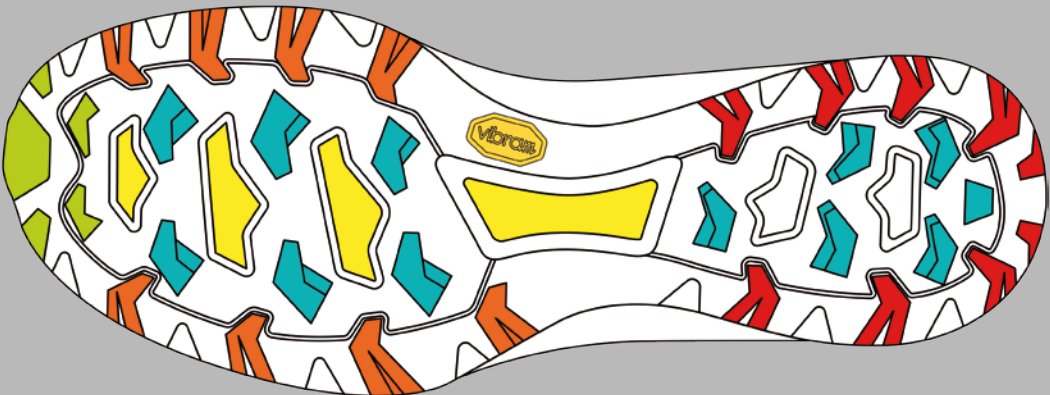
MICROTECH

HT
HEEL TENSION

EXO
EXOSKELETON
TPU ERGONOMIC
WELDED CAGE

MEGAGRIP
Vibram

Vibram® MEGAGRIP offers excellent grip properties on both dry and wet terrains while maintaining a higher level of durability. Developed for the user who frequently encounters slippery surfaces, Vibram® MEGAGRIP is suitable for trekking and multisport as well as all season hiking and travel. MEGAGRIP offers an incomparable combination of grip and durability which helps define Vibram® MEGAGRIP as the ideal high performance rubber compound for extremely demanding activities such as backpacking, canyoneering, endure - mountain biking and skate boarding. Available in soft (65/70 Shore A) and firm (75/80 Shore A) hardness formulas, Vibram® MEGAGRIP is moldable in a variety of outsole shapes and patterns designed to meet a large range of end users needs.





NEUTRON 2

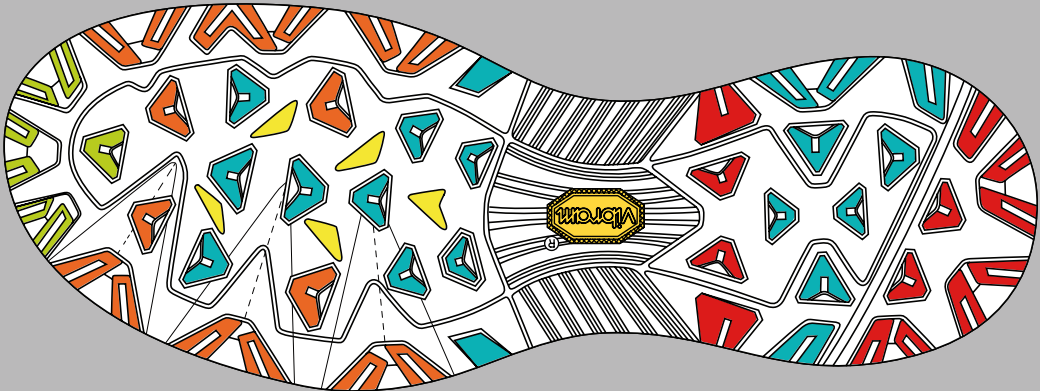
WEIGHT:
335g



GENETIC II SOLE



 **MEGAGRIP**  Vibram® MEGAGRIP offers excellent grip properties on both dry and wet terrains while maintaining a higher level of durability. Developed for the user who frequently encounters slippery surfaces, Vibram® MEGAGRIP is suitable for trekking and multisport as well as all season hiking and travel. MEGAGRIP offers an incomparable combination of grip and durability which helps define Vibram® MEGAGRIP as the ideal high performance rubber compound for extremely demanding activities such as backpacking, canyoneering, endure - mountain biking and skate boarding. Available in soft (65/70 Shore A) and firm (75/80 Shore A) hardness formulas, Vibram® MEGAGRIP is moldable in a variety of outsole shapes and patterns designed to meet a large range of end users needs.



- THRUST AREA
- BRAKING AREA
- MAX GRIP AREA
- STABILITY AREA

SOCK-FIT

BY SCARPA®

The evolution of the concept of performance, agility and comfort.
A construction system that offers a fit as snug as a sock, Sock-Fit by SCARPA® gives the feeling of being one with your footwear.



SOCK-FITLW

BY SCARPA®

On the Alpine Running models, the tongue is constructed in a single piece of elastic fabric which allows a light wrap around your feet, offering a snug feel and lateral stability.



SOCK-FITPLUS

BY SCARPA®

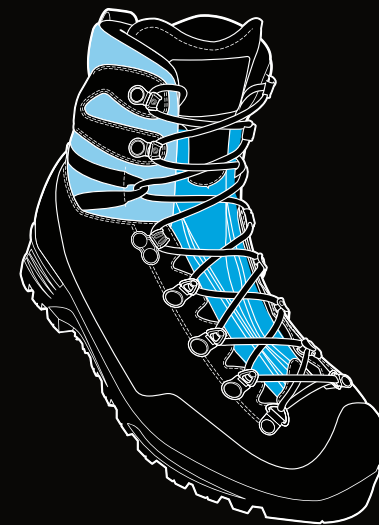
Tongue, Flex-Point and integrated gaiter are constructed in a single piece of elastic fabric S-tech Shoeller®: breathable, waterproof and resistant.



SOCK-FITXT

BY SCARPA®

Tongue, and Flex-Point are constructed in a single piece of elastic fabric S-tech Shoeller®: breathable, waterproof and resistant.



SOCK-FITDV

BY SCARPA®

The tongue is constructed in a single piece of elastic fabric S-tech Shoeller®: breathable, waterproof and resistant; the Flex-Point is made of a technical fabric.



SOCK-FITDVL

BY SCARPA®

On the low-cut models the tongue is constructed in a single piece of elastic fabric S-tech Shoeller®: breathable, waterproof and resistant.

ACTIVfit TECHNOLOGY

ENJOY THE COMFORT. Thanks to experience and research, SCARPA® offers absolute comfort with its ACTIVfit Technology line. When we say “absolute”, we think of a subjective benefit becoming objective comfort. This line establishes a new quality standard for better performance, comfort, style and durability.

Designed for various outdoor activities: backpacking, trekking on technical terrains, hiking. Through the ACTIVfit Technology, different lasts, soles and models are developed for men and women.



ACTIVimpact TECHNOLOGY

The ACTIVimpact is a technology applied to soles construction that uses materials with physical and chemical characteristics that absorb negative impacts with the ground and increase shock-absorbing features, exploiting to the utmost the energy used during the activity.



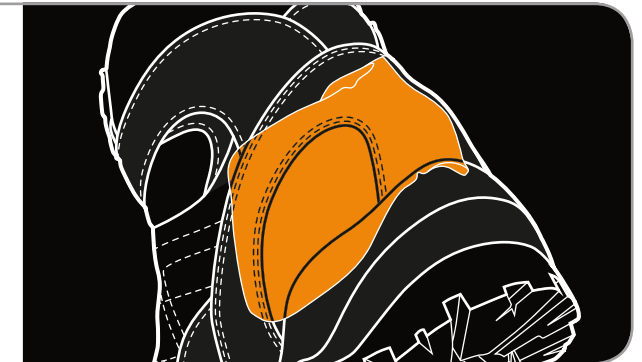
HEEL TENSION

Heel support system for better lateral stability.



ANKLE PADDING

Self-moulding padding on the ankle area made of a special “Memory Foam” material that adapts itself to everyone’s anatomy and recovers its original shape after every use, avoiding unpleasant pressure.



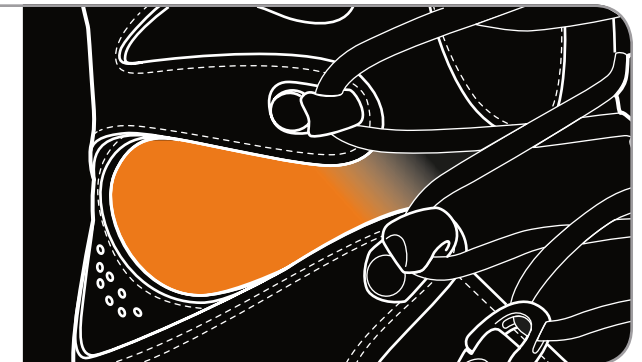
AUTOFIT COLLAR

Ergonomic padded collar made in elastic fabric, for a perfect ankle wrapping.



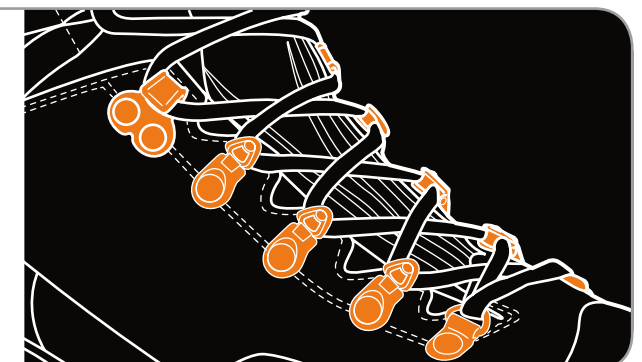
FLEX-POINT

Special upper design on flex area that allows the natural angle variation between foot and leg during walking.

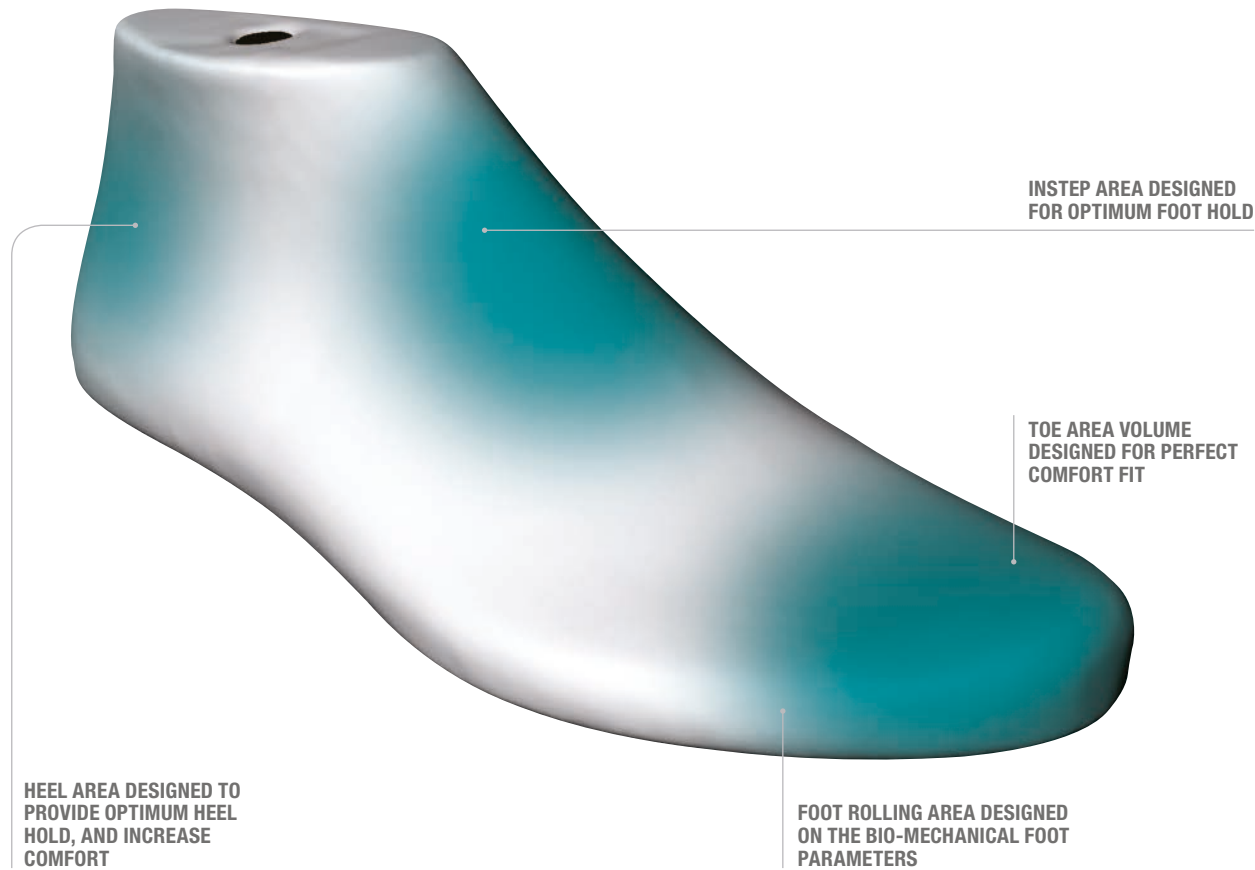


SPEED LACING

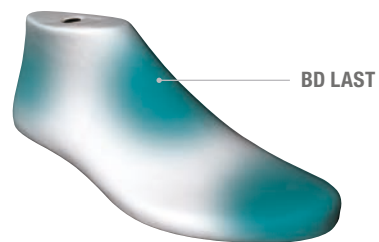
Lacing system that allows a quick lace adjustment for a perfect wrapping of the foot and ankle.



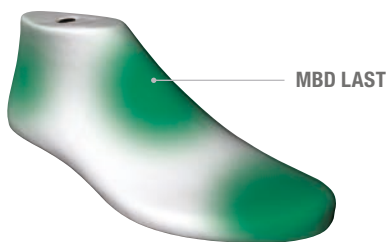
MEN FIT



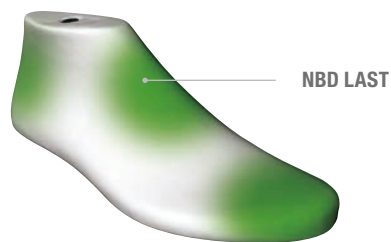
WIDE



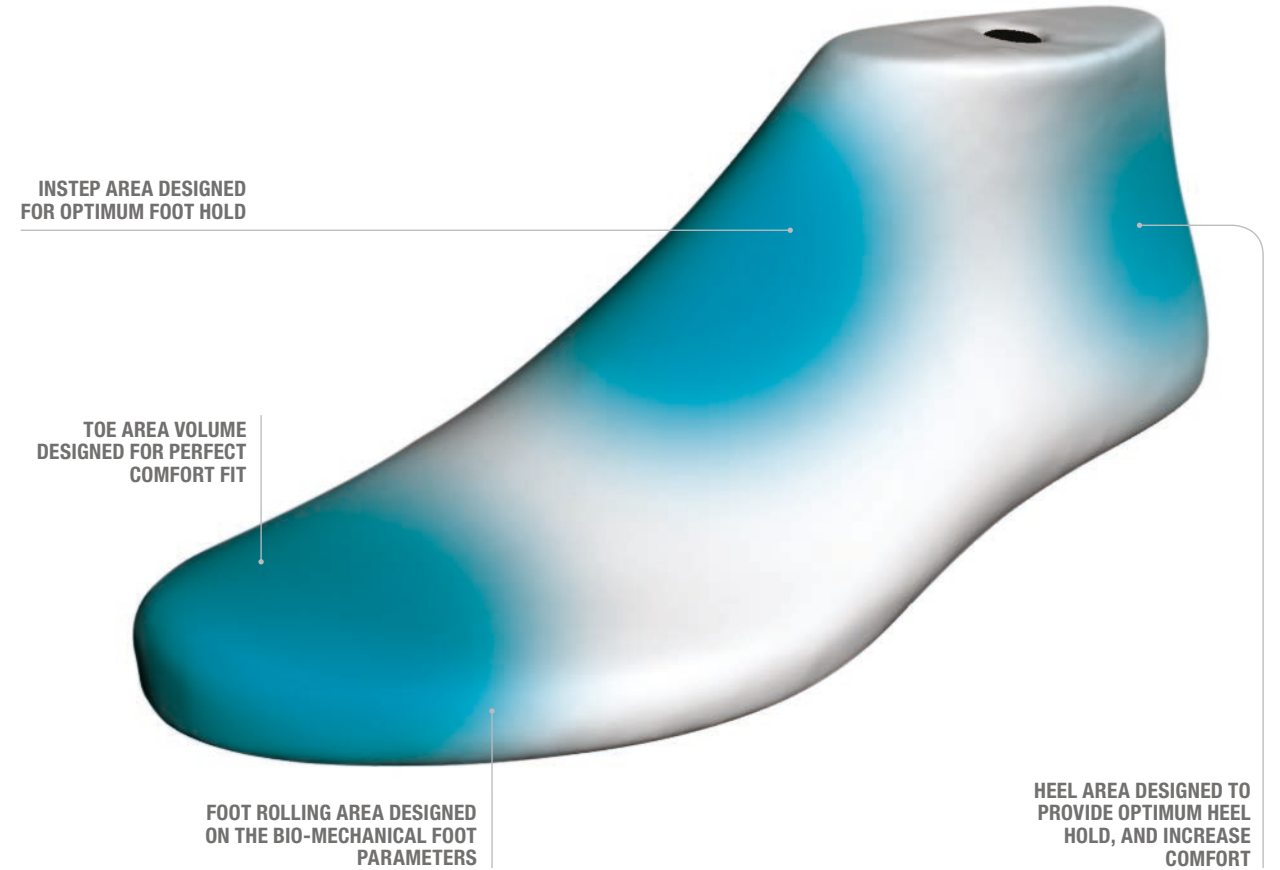
MEDIUM



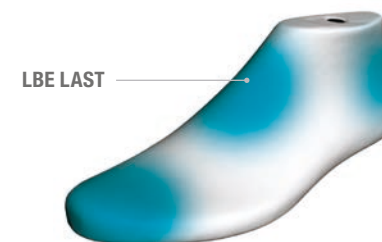
NARROW



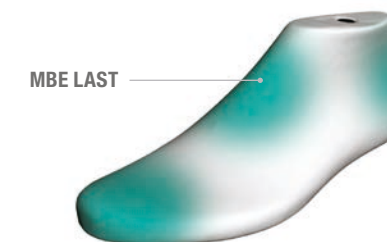
WOMEN FIT



WIDE



MEDIUM





GORE-TEX® Extended Comfort Footwear

- Extremely breathable and durably waterproof
- Keeps your feet dry and comfortably cool
- Great for high-output activities and everyday use – even in warmer weather
- Guaranteed!



GORE-TEX® SURROUND®

- Highly breathable all around and durably waterproof
- Keeps your feet dry and comfortable all around
- Ideal for moderate and warmer conditions
- Innovative sole construction with side ventilation outlets
- Guaranteed!



GORE-TEX® Performance Comfort Footwear

- Durably waterproof and highly breathable
- Keeps your feet dry and comfortable
- Ideal for a wide range of conditions and outdoor activities
- Guaranteed!



GORE-TEX® Insulated Comfort Footwear

- Durably waterproof and breathable
- Keeps your feet dry and comfortably warm
- Ideal for cold conditions and winter outdoor activities
- Guaranteed!



**WATER
NOT
INCLUDED™**



OUT DRY

OutDry® new technology truly revolutionises the current standard membrane construction technique in waterproof footwear. OutDry®, is not just “another membrane in the market”: OutDry® waterproof breathable membrane is applied directly to footwear uppers eliminating the need for ‘bootie’ construction. In fact, the OutDry® new patented lamination process allows the membrane to perfectly fit and seal the upper, eliminating all possible water entry points and really keeping water out fo your shoes. OutDry® greatly enhances the comfort and the performance of the boots, especially if compared with the standard waterproof lining ‘bootie’ system. Until now, all waterproof shoes include a ‘bootie’ system: a sock shaped lining made of

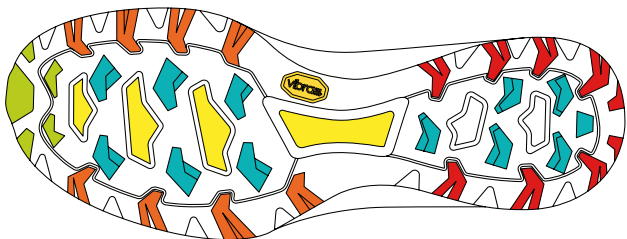
a waterproof and breathable membrane and separated from the upper layer, leaving so an empty space. By this decades-old system, in rainy or snowy conditions, although not reaching the foot, water penetrates and remains in between the ‘bootie’ and the upper. The soaked shoe becomes much heavier and the membrane breathability is extremely reduced due to the layer of water stagnating in the empty space. Conversely, with OutDry® technology, the membrane is steadily bonded to the upper inner side and there is no space in between. Water remains out of the shoe and the breathability is constantly maintained.

TECHNICAL PARTNERS



Vibram is the world leader in high performance rubber soles, targeted to the outdoor, work, recreation, fashion, repair and orthopedic markets.

Each new Vibram product is designed using only the latest designs and the best compounds for its specific use. New soles are always produced with three objectives: to guarantee the best performance, the maximum level of comfort and quality over time. These goals are reached by the stringent tests that are executed in the laboratory and in the field by the Vibram Tester Team.



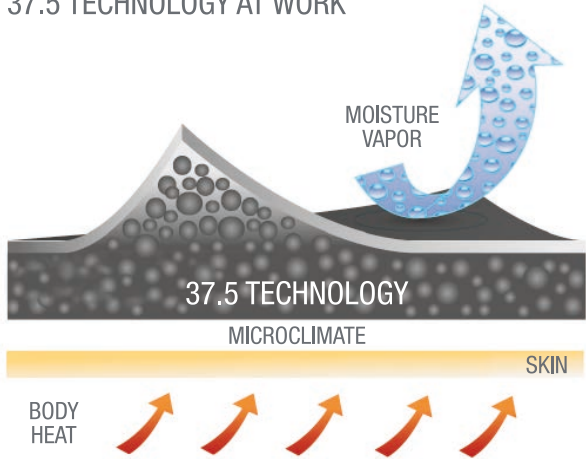
- THRUST AREA
- BRAKING AREA
- MAX GRIP AREA
- STABILITY AREA



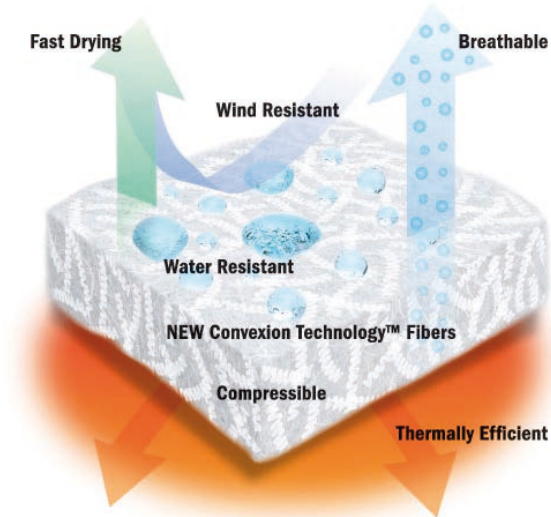
37.5™TECHNOLOGY BY COCONA

With 37.5 technology, patented active particles permanently embedded at the fiber level capture and release moisture vapor. Not only do these active particles add 800% more surface area to the fiber, they also provide a unique driving force to remove moisture vapor.

37.5 TECHNOLOGY AT WORK



PrimaLoft® insulation is an integral component in products that provide warmth and comfort from head to toe, and is warmer, drier, softer and more compressible than all other insulations.



P.O.P.



TNT BANNER

Code:	108001/6
Color:	Green
Dimension:	300 x 80 cm



STICKERS KIT

Code:	104005/6
Color:	Green
Dimension:	1x 104001
	2x 104004
	1x 104002
	1x104003
	2 Alien heads



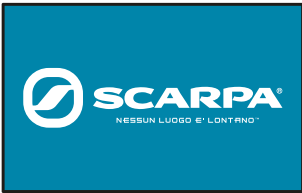
BANNER

Code:	108020/6
Color:	Green
Dimension:	100 x 80 cm



CUBE POUF

Code:	108060/6
Color:	Green
Dimension:	40 x 40 x 46 cm



CARPET

Code:	108050/6
Color:	Green
Dimension:	80 x 50 cm



SHELF

Code:	SH/1
Color:	Transparent
Dimension:	27 x 12 cm



FLAG TABLE

Code:	108042/6
Color:	Green
Dimension:	50 x 30 cm



FLAG MINI

Code:	108041/6
Color:	Green
Dimension:	200 x 42 cm



FLAG

Code:	108040/6
Color:	Green
Dimension:	440 x 85 cm