



APPROACH



MESCALITO

APPROACH

WEIGHT:  
390g

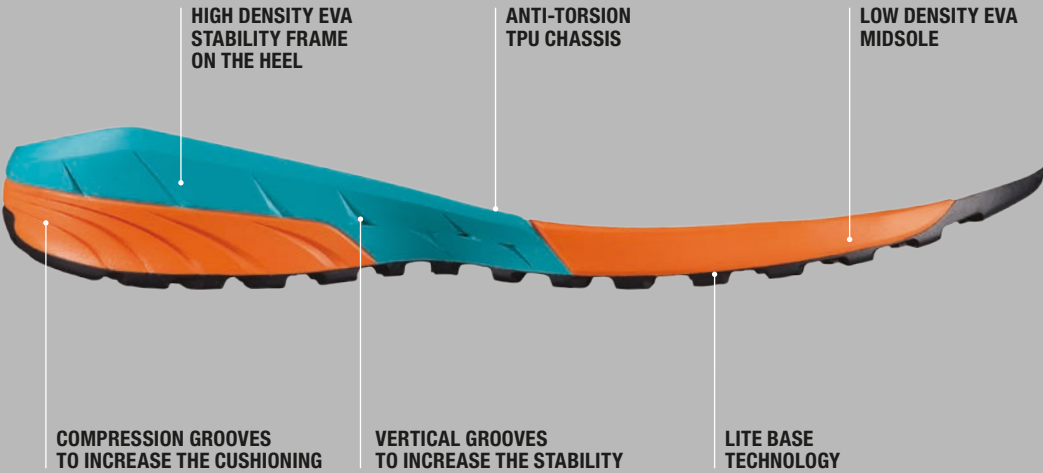


DYNAMIS LBT SOLE

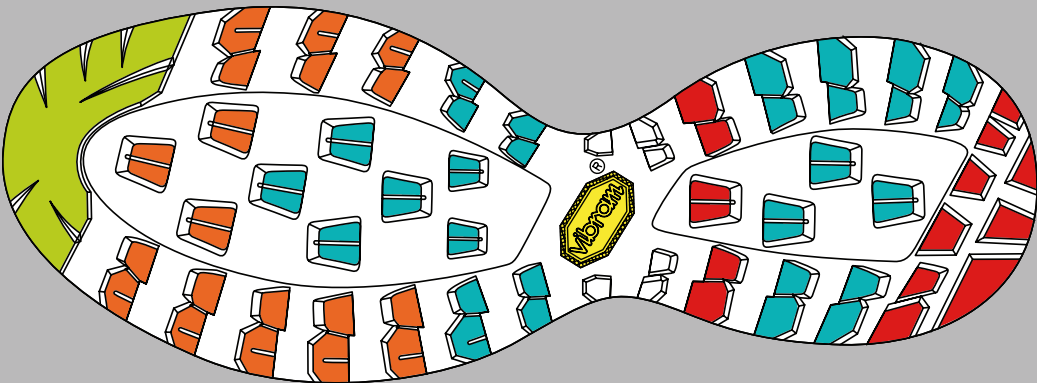


Vibram® has developed LITEBASE to drastically reduce the thickness and the weight of the rubber sole while maintaining unchanged the grip, traction and durability performance.

- Vibram® Litebase MAIN FEATURES
- The rubber base is up to 50% slimmer.
- The tread is up to 30% lighter than the traditional tread.
- The performance is unchanged in terms of traction, duration and wear resistance.



Vibram® MEGAGRIP offers excellent grip properties on both dry and wet terrains while maintaining a higher level of durability. Developed for the user who frequently encounters slippery surfaces, Vibram® MEGAGRIP is suitable for trekking and multisport as well as all season hiking and travel. MEGAGRIP offers an incomparable combination of grip and durability which helps define Vibram® MEGAGRIP as the ideal high performance rubber compound for extremely demanding activities such as backpacking, canyoneering, endure - mountain biking and skate boarding. Available in soft (65/70 Shore A) and firm (75/80 Shore A) hardness formulas, Vibram® MEGAGRIP is moldable in a variety of outsole shapes and patterns designed to meet a large range of end users needs.



- THRUST AREA
- BRAKING AREA
- MAX GRIP AREA
- STABILITY AREA

# SOCK-FIT

BY SCARPA®

The evolution of the concept of performance, agility and comfort.  
A construction system that offers a fit as snug as a sock, Sock-Fit by SCARPA® gives the feeling of being one with your footwear.



## SOCK-FITLW

BY SCARPA®

On the Alpine Running models, the tongue is constructed in a single piece of elastic fabric which allows a light wrap around your feet, offering a snug feel and lateral stability.



## SOCK-FITPLUS

BY SCARPA®

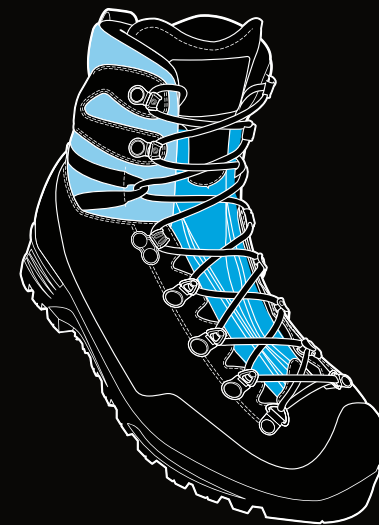
Tongue, Flex-Point and integrated gaiter are constructed in a single piece of elastic fabric S-tech Shoeller®: breathable, waterproof and resistant.



## SOCK-FITXT

BY SCARPA®

Tongue, and Flex-Point are constructed in a single piece of elastic fabric S-tech Shoeller®: breathable, waterproof and resistant.



## SOCK-FITDV

BY SCARPA®

The tongue is constructed in a single piece of elastic fabric S-tech Shoeller®: breathable, waterproof and resistant; the Flex-Point is made of a technical fabric.



## SOCK-FITDVL

BY SCARPA®

On the low-cut models the tongue is constructed in a single piece of elastic fabric S-tech Shoeller®: breathable, waterproof and resistant.

# ACTIVfit TECHNOLOGY

ENJOY THE COMFORT. Thanks to experience and research, SCARPA® offers absolute comfort with its ACTIVfit Technology line. When we say “absolute”, we think of a subjective benefit becoming objective comfort. This line establishes a new quality standard for better performance, comfort, style and durability.

Designed for various outdoor activities: backpacking, trekking on technical terrains, hiking. Through the ACTIVfit Technology, different lasts, soles and models are developed for men and women.



# ACTIVimpact TECHNOLOGY

The ACTIVimpact is a technology applied to soles construction that uses materials with physical and chemical characteristics that absorb negative impacts with the ground and increase shock-absorbing features, exploiting to the utmost the energy used during the activity.



## HEEL TENSION

Heel support system for better lateral stability.



## ANKLE PADDING

Self-moulding padding on the ankle area made of a special “Memory Foam” material that adapts itself to everyone’s anatomy and recovers its original shape after every use, avoiding unpleasant pressure.



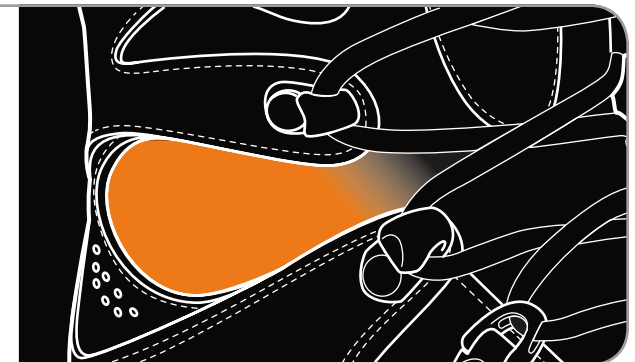
## AUTOFIT COLLAR

Ergonomic padded collar made in elastic fabric, for a perfect ankle wrapping.



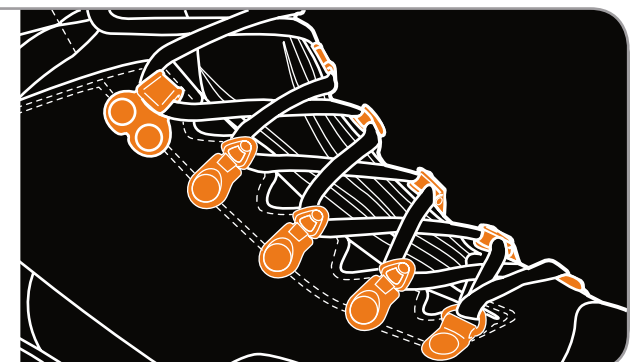
## FLEX-POINT

Special upper design on flex area that allows the natural angle variation between foot and leg during walking.



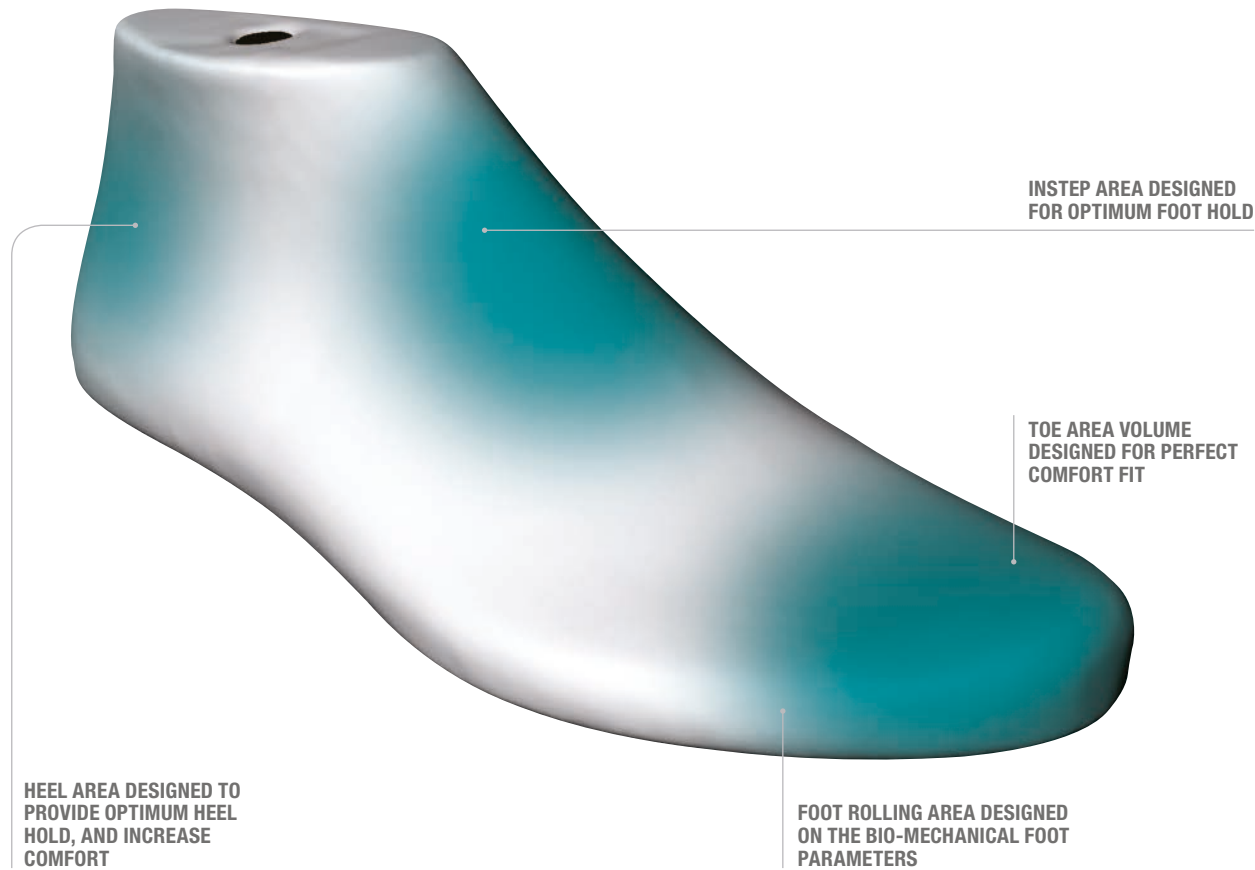
## SPEED LACING

Lacing system that allows a quick lace adjustment for a perfect wrapping of the foot and ankle.

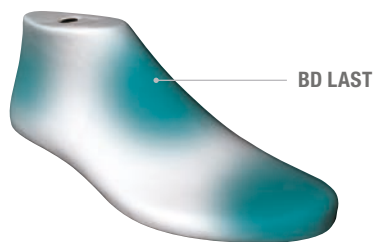




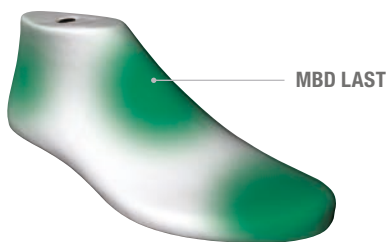
## MEN FIT



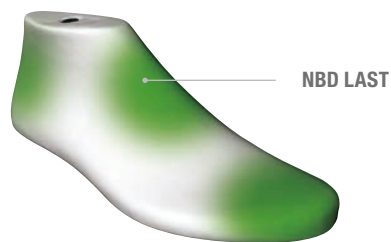
### WIDE



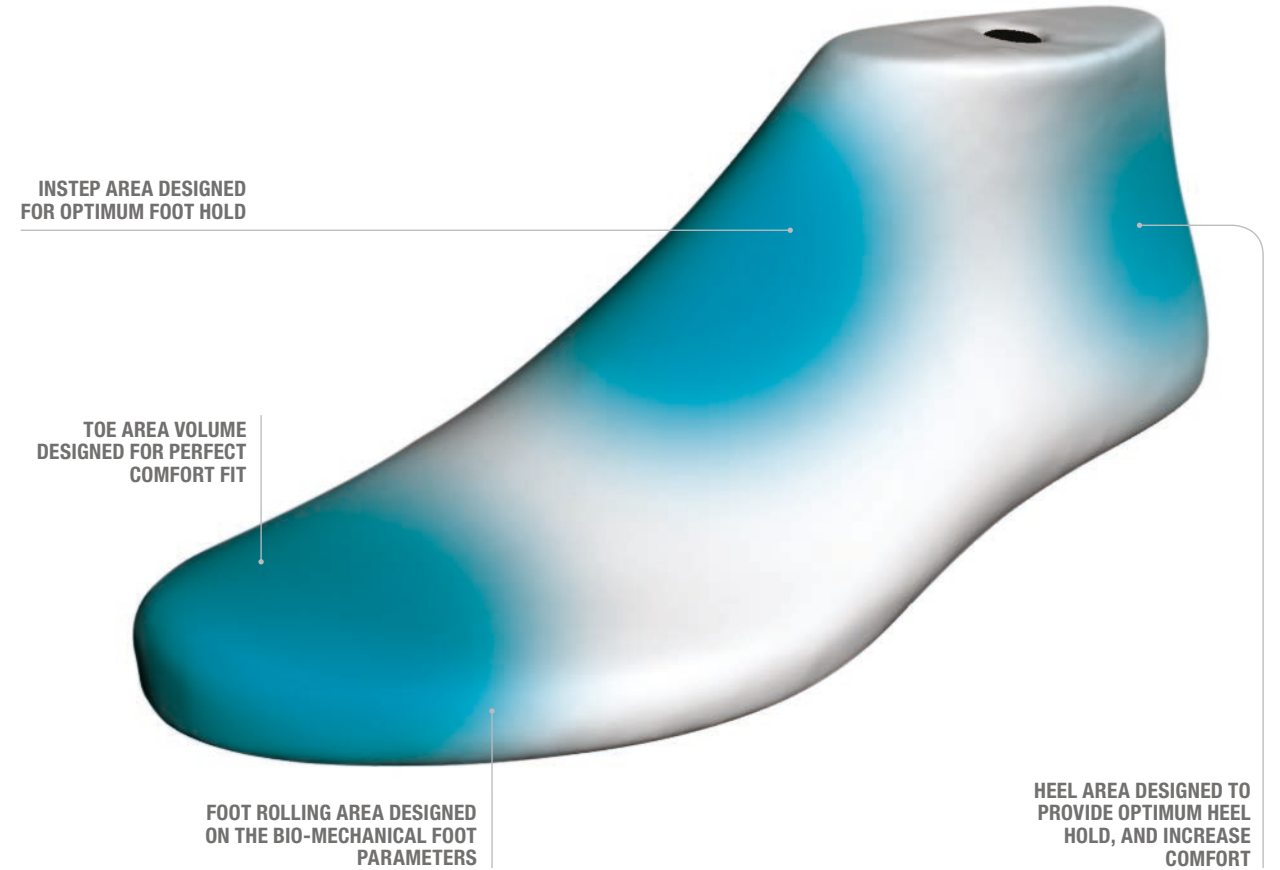
### MEDIUM



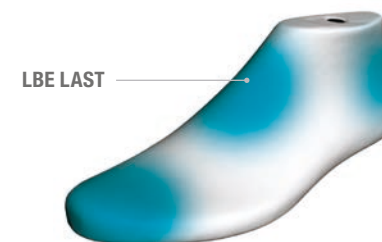
### NARROW



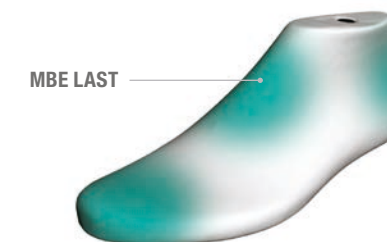
## WOMEN FIT



### WIDE



### MEDIUM





**GORE-TEX® Extended Comfort Footwear**

- Extremely breathable and durably waterproof
- Keeps your feet dry and comfortably cool
- Great for high-output activities and everyday use – even in warmer weather
- Guaranteed!



**GORE-TEX® SURROUND®**

- Highly breathable all around and durably waterproof
- Keeps your feet dry and comfortable all around
- Ideal for moderate and warmer conditions
- Innovative sole construction with side ventilation outlets
- Guaranteed!



**GORE-TEX® Performance Comfort Footwear**

- Durably waterproof and highly breathable
- Keeps your feet dry and comfortable
- Ideal for a wide range of conditions and outdoor activities
- Guaranteed!



**GORE-TEX® Insulated Comfort Footwear**

- Durably waterproof and breathable
- Keeps your feet dry and comfortably warm
- Ideal for cold conditions and winter outdoor activities
- Guaranteed!



**WATER  
NOT  
INCLUDED™**



**OUT DRY**

OutDry® new technology truly revolutionises the current standard membrane construction technique in waterproof footwear. OutDry®, is not just “another membrane in the market”: OutDry® waterproof breathable membrane is applied directly to footwear uppers eliminating the need for ‘bootie’ construction. In fact, the OutDry® new patented lamination process allows the membrane to perfectly fit and seal the upper, eliminating all possible water entry points and really keeping water out fo your shoes. OutDry® greatly enhances the comfort and the performance of the boots, especially if compared with the standard waterproof lining ‘bootie’ system. Until now, all waterproof shoes include a ‘bootie’ system: a sock shaped lining made of

a waterproof and breathable membrane and separated from the upper layer, leaving so an empty space. By this decades-old system, in rainy or snowy conditions, although not reaching the foot, water penetrates and remains in between the ‘bootie’ and the upper. The soaked shoe becomes much heavier and the membrane breathability is extremely reduced due to the layer of water stagnating in the empty space. Conversely, with OutDry® technology, the membrane is steadily bonded to the upper inner side and there is no space in between. Water remains out of the shoe and the breathability is constantly maintained.

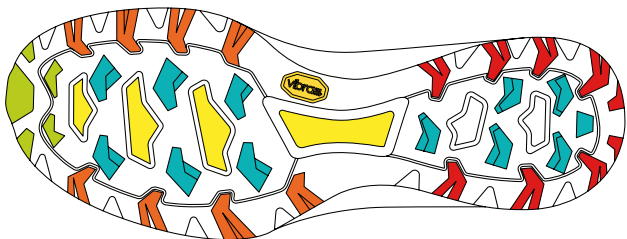


TECHNICAL PARTNERS



Vibram is the world leader in high performance rubber soles, targeted to the outdoor, work, recreation, fashion, repair and orthopedic markets.

Each new Vibram product is designed using only the latest designs and the best compounds for its specific use. New soles are always produced with three objectives: to guarantee the best performance, the maximum level of comfort and quality over time. These goals are reached by the stringent tests that are executed in the laboratory and in the field by the Vibram Tester Team.



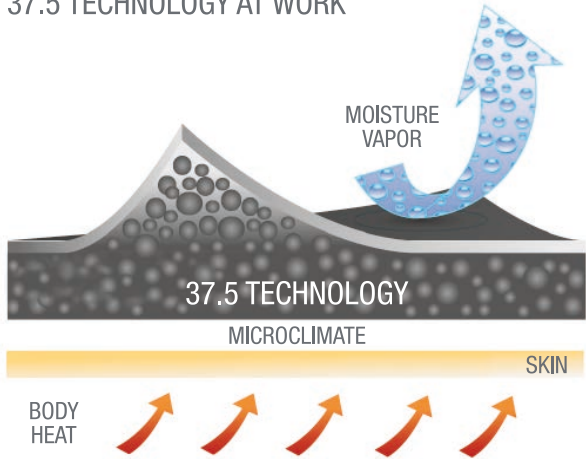
- THRUST AREA
- BRAKING AREA
- MAX GRIP AREA
- STABILITY AREA



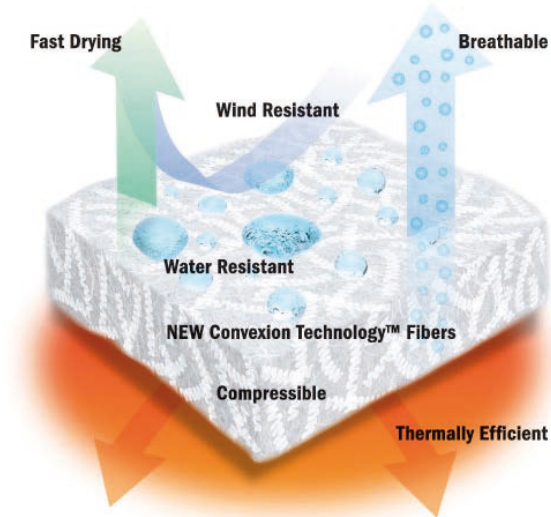
37.5™TECHNOLOGY BY COCONA

With 37.5 technology, patented active particles permanently embedded at the fiber level capture and release moisture vapor. Not only do these active particles add 800% more surface area to the fiber, they also provide a unique driving force to remove moisture vapor.

37.5 TECHNOLOGY AT WORK



PrimaLoft® insulation is an integral component in products that provide warmth and comfort from head to toe, and is warmer, drier, softer and more compressible than all other insulations.



P.O.P.



TNT BANNER

|            |             |
|------------|-------------|
| Code:      | 108001/6    |
| Color:     | Green       |
| Dimension: | 300 x 80 cm |



STICKERS KIT

|            |               |
|------------|---------------|
| Code:      | 104005/6      |
| Color:     | Green         |
| Dimension: | 1x 104001     |
|            | 2x 104004     |
|            | 1x 104002     |
|            | 1x104003      |
|            | 2 Alien heads |



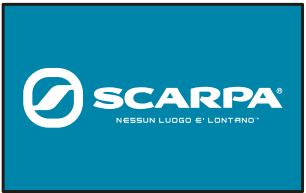
BANNER

|            |             |
|------------|-------------|
| Code:      | 108020/6    |
| Color:     | Green       |
| Dimension: | 100 x 80 cm |



CUBE POUF

|            |                 |
|------------|-----------------|
| Code:      | 108060/6        |
| Color:     | Green           |
| Dimension: | 40 x 40 x 46 cm |



CARPET

|            |            |
|------------|------------|
| Code:      | 108050/6   |
| Color:     | Green      |
| Dimension: | 80 x 50 cm |



SHELF

|            |             |
|------------|-------------|
| Code:      | SH/1        |
| Color:     | Transparent |
| Dimension: | 27 x 12 cm  |



FLAG TABLE

|            |            |
|------------|------------|
| Code:      | 108042/6   |
| Color:     | Green      |
| Dimension: | 50 x 30 cm |



FLAG MINI

|            |             |
|------------|-------------|
| Code:      | 108041/6    |
| Color:     | Green       |
| Dimension: | 200 x 42 cm |



FLAG

|            |             |
|------------|-------------|
| Code:      | 108040/6    |
| Color:     | Green       |
| Dimension: | 440 x 85 cm |