

www.samyungenc.com

SAMYUNG ENC
www.samyungenc.com

Wide 4.3" Color GPS/Combo/Fishfinder

Compact and a simple-to-use menu structure satisfies your sail !



SAMYUNG ENC Co.,Ltd. Head Office : 1123-17, Dongsam-Dong, Youngdo-Gu, Busan, Korea, 606-083 Tel : 82-51-601-5530(Rep.) Fax : 82-51-413-4446
A/S Center : 65-20, 2-Ga Namhang-Dong, Yungdo-Gu, Busan, Korea, 606-032 Tel : 82-51-601-5570~4(Rep.) Fax : 82-51-416-5515

SAMYUNG ENC Co.,Ltd.



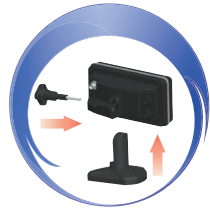
It will bring all mariners to a distinctive level of experincing at sea !!

Wide 4.3" High resolution TFT LCD !!

Function by using icon for menu !!



- Save a chart image on internal memory (128M)
- Save internal data on SD card
- View and print saved data on SD card



- Adjustable bracket can be attached or detached easily



Wide 4.3" Color GPS/Combo/Fishfinder

N430/NF430/F430

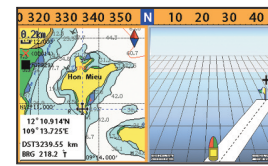
◆ Features

- Wide 4.3" High resolution TFT LCD
- Fast screen response by high performance CPU
- 10 steps adjustable LED backlight
- Multiple languages available including English, Chinese, Russian, Thai, Malay etc.
- 128MB internal memory and built-in standard Samyung chart
- DGPS(WAAS, MSAS, EGNOS)
- User-friendly operation type by using icon for each menu
- NMEA 0183 interface (AIS, NAVTEX, DSC etc.)
- 2 split screens (Chart, Data, Highway etc.)
- Suitable for small fishing boat
- Using single frequency (200Khz) for detection of small and individual fish
- Easy to use by auto gain

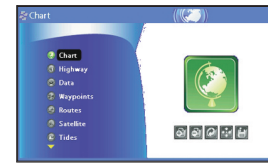
*Experience!
The best quality with reasonable price.*

Spec.	Model	N430	NF430	F430
Size		127.5 mm(H) x 183 mm(W) x 91.5 mm(D)		
Display		Wide 4.3", TFT color, 480 x 272 pixels		
Supply voltage		10 to 36 V DC		
Supply current		13.8 V, 0.13A min-no backlighting, 0.24A max-full backlighting.		
Operating temp.		-10°C ~ 50°C		
Alarms		Arrival radius, anchor, XTE, danger, too shallow, too deep, fish, temperature, temperature rate, low battery, low fuel(optional), loss of DGPS fix, radar guard zone, dangerous AIS vessels.		
Chart/User card		C-MAP™ SD Card (NT-MAX, NT+ or NT) / SD Card		-
Waypoints		10,000 waypoints (Event Mark : 48, Mark Color : 16)		-
Routes		100 Routes, with up to 100 points each		-
Tracks		By time or distance, 10 track of 15,000 points		-
Chart datums		216 Chart datums (see next page)		-
Chart scale		0.2 ~ 500 nm		-
Interface		NMEA 0183		-
Frequency		-	200KHz	
Output		-	300W	
Depth Range		-	Min : 0m~3m, Max : 0m~300m	
Color Display		-	16 colors	
Brightness		-	10-step	
Screen Moving Speed		-	super fast, fast, medium, low, stop	
Battery Voltage Display		-	Voltage number dispaly	
AUTO GAIN Adjustment		-	OFF/ON	
A-Mode Display		-	OFF/ON	
Demo Dispaly		-	OFF/ON	
Weak Color Removal		-	0%~75%	

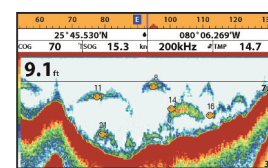
* Specification is subject to change without notice



- AIS information on chart plotter by connecting to compatible AIS receiver (NMEA0183)
- Two split screen presentation available
- Display multiple functions on split screen

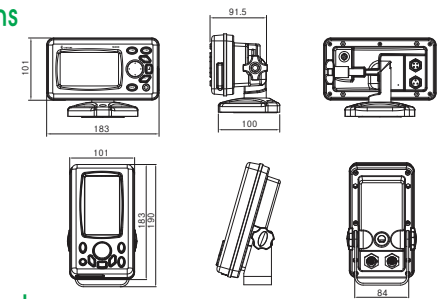


- Choose a page / function by using icon for menu
- Various icons



- High output power 200W built-in RMS enable to distinguish a seabed up to 300m
- Single frequency(200kHz) transducer
- Zoom, Bottom lock, Full screen zoom, Bottom, 200KHz, A-Scope

◆ Dimensions



◆ Component

- Main unit 1Unit
- GPS Antenna(N430/NF430) 1Unit
- Transducer(NF430/F430) 1Unit
- Installioin materials, Spare parts, Manual 1Set

◆ Option

- Power Supply
- SD Card