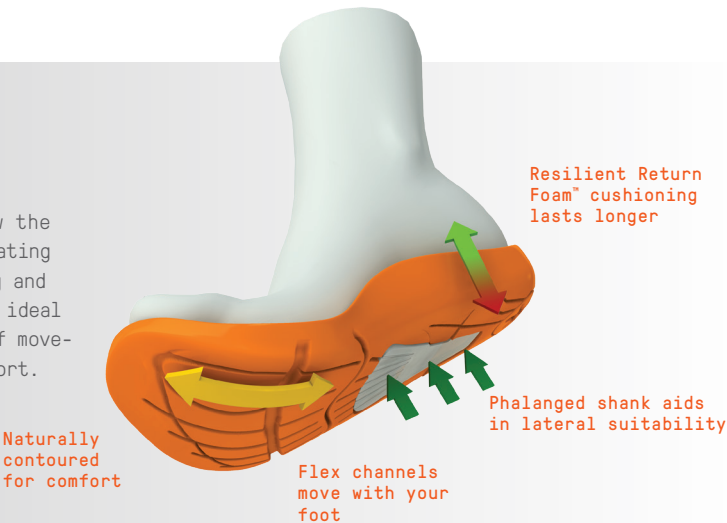


Carefully selected technologies that help you adapt and thrive in the great outside.

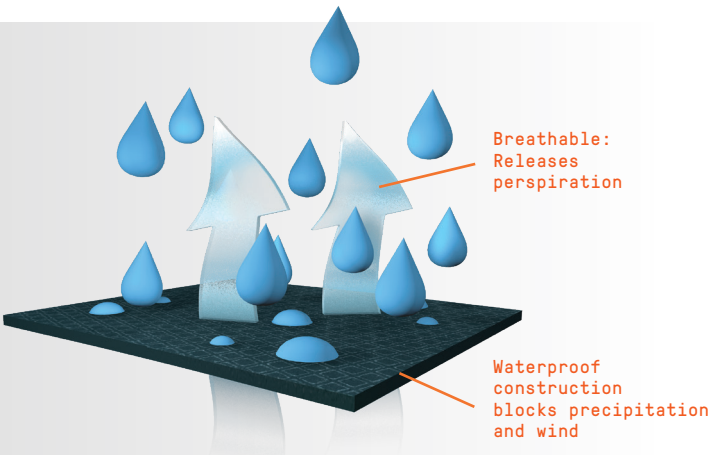
M-SELECT MOVE

Our **M-Select™ MOVE** footframe is anatomically designed to follow the natural flex of your foot, integrating resilient Return Foam™ cushioning and contoured support to give you an ideal combination of natural freedom of movement, stability and all-day comfort.



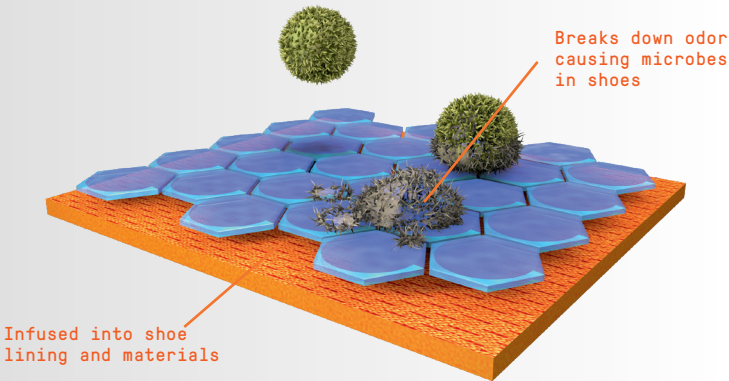
M-SELECT DRY M-SELECT XDRY

Outside protection when you're on the move, **M-Select™ DRY** products shed external moisture from precipitation and wet ground conditions while allowing moisture from physical activity to escape to give you dry comfort inside and out. For extreme wet weather conditions **M-Select™ XDRY** delivers added protection.



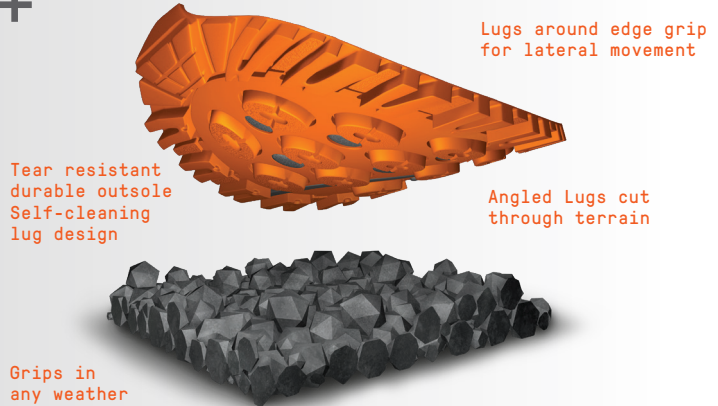
M-SELECT FRESH

Long-lasting **M-Select™ FRESH** prevents sweat and moisture from affecting the freshness of your shoes. Our antimicrobial agents penetrate and disrupt the reproduction of the odor causing microbes in your shoes.



M-SELECT GRIP M-SELECT GRIP+

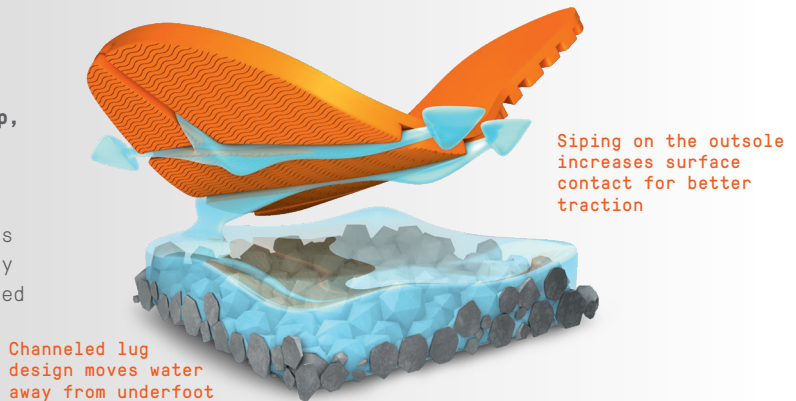
Specifically tuned to match your activities, our **M-Select™ GRIP** outsoles root themselves in performance designs and materials to deliver durable, highly slip-resistant traction on wet and dry ground, and over mixed terrain, releasing dirt and debris with specialized lugs. For even greater performance and durability, **M-Select™ GRIP+** delivers added traction.



M-SELECT WET GRIP

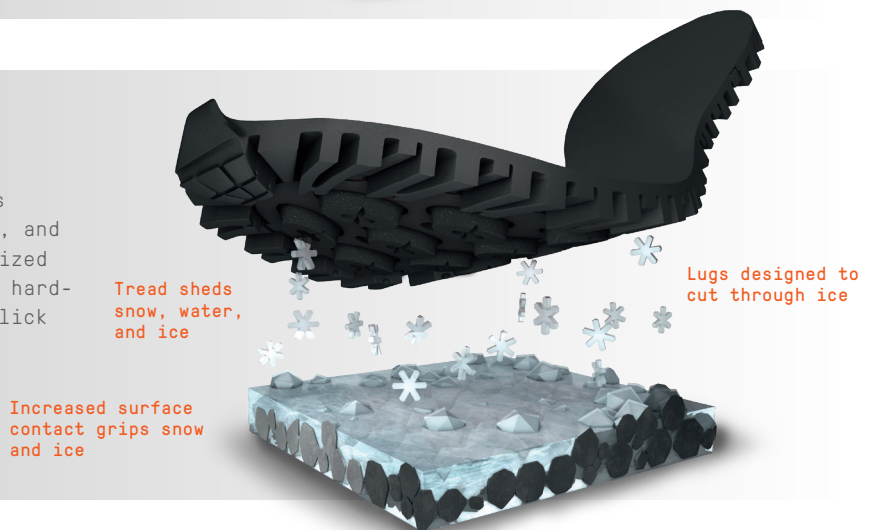
M-Select™ WET GRIP – More Grip, Less Slip.

M-Select™ WET GRIP maximizes traction over wet surfaces with highly angled lug designs that channel excess water away from underfoot and razor siped rubber that increases surface traction.



M-SELECT ICE

M-Select™ ICE maximizes traction over wet snow, and wet ice with a specialized design that bites into hard-packed, slippery and slick surfaces



AIR CUSHION+ PLATFORM

LIGHTWEIGHT AND BUILT FOR ULTIMATE CUSHIONING FOR ALL YOUR URBAN ADVENTURES

AIRCUSHION+

CUSHION: Heel-to-toe air pockets for all day support

COMFORT: Soft heel pod for shock absorption

LIGHTWEIGHT: Smart lug pattern for minimal weight



Q FORM 2 PLATFORM

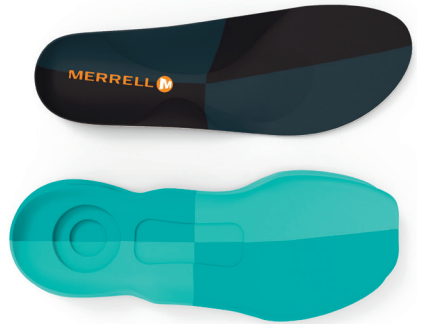
NATURAL ALIGNMENT AND SUPERIOR COMFORT

Q FORM 2

ALIGNMENT: Our gender-engineered dual-density foam midsole is properly sequenced into quadrants to help guide the foot, promoting a comfortable, efficient stride on the trail.

STABILITY: Heel-centering technology compresses on heel strike, creating a pronounced heel cup, which keeps the heel centered, absorbs shock, and stabilizes the foot.

SUPPORT: Our Kinetic Fit™ Tri insole works with the natural movements of the foot to provide stability to all three major arches during athletic activity.



FLEXCONNECT™ PLATFORM

SECURE FIT. NATURAL FLEX. SERIOUS GRIP.

FLEXCONNECT

FIT: Designed to resemble and support the ligaments and tendons in the human foot, the Hyperlock™ heel provides a precise heel lock for quick descents and sharp turns.

FLEX: Anatomically-inspired dual-directional flex grooves support the natural motion of the foot by promoting upward and downward flexibility for agility and stability on uneven terrain.

GRIP: A sticky, durable rubber outsole with skeleton-like lugs and flex grooves moves with the foot to offer a full range of flexibility for superior grip and traction on wet or dry trails.

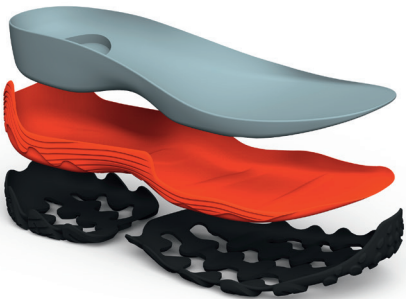


FLEXPLATE™

Ultra lightweight protective plate for tuned stability

FLEXPLATE™

Merrell FlexPlate™ technology integrates a lightweight, full foot stability plate with strategically placed outsole lugs to provide stability, underfoot protection, durability, and integrated grip. Variable material compositions offers optimal rigidity at one end of the plate, and optimal flexibility at the other.



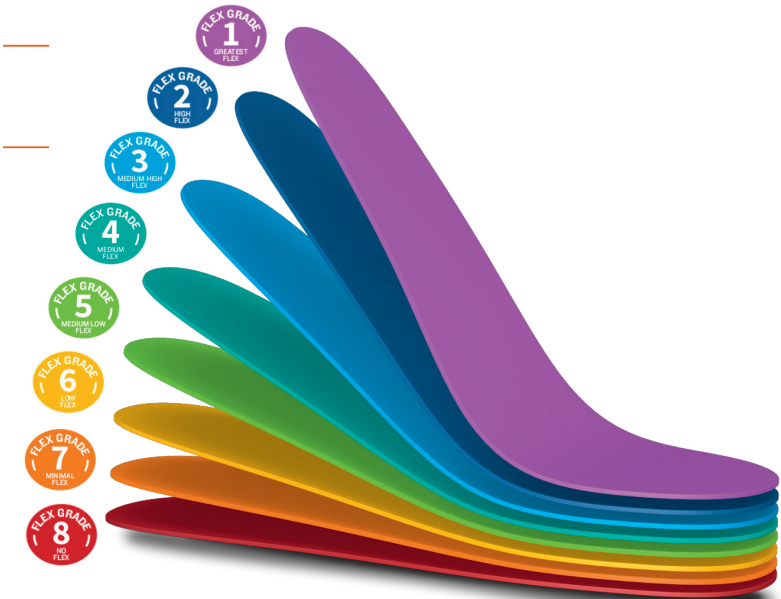
FLEX INDEX™

Because everyone has individual preferences around pack hike boot flexibility, we created the FlexIndex™, which is a rating system that grades our pack hike boots from most flexible/connected to most rigid/protected. This allows the user to quickly narrow in on the experience they are looking for. More flex means greater ground sensitivity, so the lower the rating, the more connected you'll feel. On the opposite end, higher rigidity provides greater protection as the terrain becomes more uneven.

Individual preference varies, especially when considering load and speed variables, and this is the reason we offer eight distinct, highly tuned rating levels to meet any preference.

FEATURES

- Flex Grade 1
Greatest flex
- Flex Grade 2
High flex
- Flex Grade 3
Medium high flex
- Flex Grade 4
Medium flex
- Flex Grade 5
Medium low flex
- Flex Grade 6
Low flex
- Flex Grade 7
Minimal flex
- Flex Grade 8
No flex





We proudly equip nearly all our multi-sport and hiking shoes with Vibram® outsoles for two reasons. First, no company does a better job of creating lug patterns that provide stability in all conditions, with no lugs placed under the arch, so your foot flexes more naturally for greater comfort. Second, they've created two advanced rubber compounds – Trek and TC5+ – that provide sure traction on both wet and dry surfaces in even the most extreme temperatures.



MEGAGRIP

Developed for the user who frequently encounters slippery surfaces, Vibram® Megagrip is suitable for trekking, multisport, as well as all season hiking and travel. It offers an incomparable combination of grip and durability which helps define Vibram® Megagrip as the ideal high performance rubber compound for extremely demanding activities such as backpacking and canyoneering.



Vibram® Arctic™ Grip, a Wolverine Worldwide exclusive until Fall 2017, is the most advanced cold weather gripping system ever created by Vibram®, providing 3x more traction on wet, icy surfaces compared to leading Vibram soles.



Scotchgard™ Products work to repel liquids and block stains, and they won't change the look and feel of leather and textile.



Nothing says dry, warm, and breathable like GORE-TEX®. We leverage three different GORE-TEX® technologies formulated just for footwear – Extended Comfort, Performance Comfort, and Insulated Comfort – strategically leveraging each depending on the level of activity and anticipated temperature. Extended Comfort Footwear has been engineered to repel moisture and enhance breathability during high-energy activities either indoors or on warmer days; Performance Comfort Footwear is optimized for all activities in cooler temperatures; and Insulated Comfort Footwear has been designed to keep the elements out, even during the coldest winter activities.



Hiking shoes/boots engineered with GORE-TEX® SURROUND™ product technology are designed for outdoor use in moderate to warmer conditions. They offer enduring waterproof protection and optimum breathability all around the foot. Moisture and warmth also escape through the GORE-TEX® membrane into the open structure of the “spacer” – and from there out of the shoe via side ventilation outlets. The result is faster sweat removal rate, keeping your feet dry and comfortable even at higher temperatures. All GORE-TEX® products carry the GORE-TEX® GUARANTEED TO KEEP YOU DRY™ promise.



With GORE® Invisible Fit Technology, the GORE-TEX® membrane is engineered to bond to a variety of athletic uppers and reduces water pickup, meaning dry-out time is 50%¹ faster. The lighter construction reduces its weight by up to 18%¹ and eliminates wrinkles and folds, significantly reducing pressure marks. It also allows the liner to be dropped in the heel, eliminating stitching abrasion points along the ankle and down the heel. A reduced gusset height brings a more comfortable tongue construction with no irritation on the instep, and a wide toe box delivers full freedom of movement in the toe area. It's quieter, thanks to the removal of crunching or popping sounds. Color style customization at the heel drop liner means shoes look as great as they perform.

¹ Compared to standard GORE-TEX® bootie construction