



Make It Yours.

SickleFlow 140 ARGB



SickleFlow 140 ARGB, a new series of the CoolerMaster Fan family, provides a specific air cooling solution ideal for CPU coolers and chassis in-take fans. Optimized blade design with updated curve that improves air flow and air pressure. Enhanced frame structure, reducing turbulent flow and noise and increasing overall work efficiency. Sealed and secured fan bearing, preventing dust and lubricating oil leakage while increasing the fan's operation stability and life span.

Features

New Air Balance Blade - Optimized fan blade design with increased curvature that improves air flow and air pressure.

Improved Frame Durability - Enhanced square frame structure with added rib-support for reducing turbulent flow, noise and increasing overall work efficiency.

New Bearing Sealant - Two-tier sealing mechanism designed to improve dustproof capabilities and prevent lubricant oil leakage for extended life span and performance.

Luminescent Light Effect- Using frosted fan blades to enhance light dispersion for more vibrant and luminescent effect.

Certified Compatible with Asus Aura, ASRock RGB and MSI RGB Motherboards. (Both ARGB and RGB version)

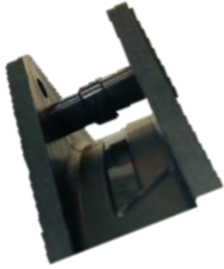
Specifications & Packing Information

Product Name	SickleFlow 140 ARGB
Product Number	MFX-B4DN-14NPA-R1
Profile	Addressable RGB
Bearing Type	Rifle
Fan Speed (RPM)	650~1400 RPM ± 200 RPM
Airflow (CFM)	67 CFM ± 10%
Air Pressure (mmH ₂ O)	2.2 mmH ₂ O ± 10%
Fan Noise Level (dBA)	10~27 dBA
Dimensions (mm)	140 x 140 x 25 (5.5 x 5.5 x 1")
MTTF (hours)	160,000
RGB Connector	3-Pin ARGB
RGB Rated Voltage	5 VDC
RGB Rated Current	0.21 A
Rated Voltage	12 VDC
Rated Current	0.15 A
Safety Current	0.4 A
Power Consumption	1.8 W
Connector	4-Pin PWM
Weight	195 g (0.43 lbs)
Warranty	2 Years

EAN code	4719512104835
UPC code	884102077142
Net weight (Kg)	0.202
Gross weight (Kg)	0.283
Carton dimension (L x W x H)cm	16.3 x 3.2 x 24.8
Unit/Carton(pcs)	20

Cont.	W/ Pallet	Carton/ Pallet	W/O Pallet
20'	13200	96	N/A
40'	26400	96	N/A
40 HQ	31680	96	N/A
45 HQ	--	---	N/A

FEATURES



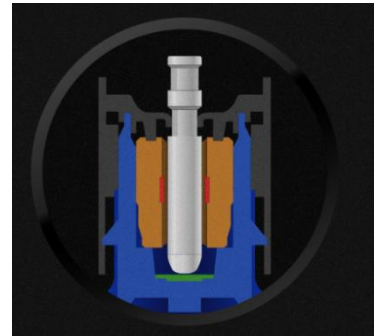
Better Structural Support

New Flange housing design with added rib for better support, reduced vibration and noise.



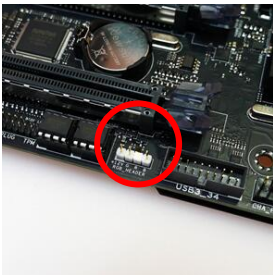
New AB Fan Blades

Larger and more curved fan blades for optimized air flow and air pressure.



Two-Tier Sealing Mechanism

Improve dustproof properties as well as prevent sleeve lubricant from leaking.



Motherboard/Controller (Needed)

Requires Motherboard ARGB port or ARGB controller (sold separately).