

# BOOTS PHILOSOPHY

Skiers from all over the world keep reminding us of their three most important concerns when purchasing new boots: FIT, PERFORMANCE and COMFORT. Every skier wants these three things, but every skier has a different idea as to what Fit, Performance and Comfort mean to them. This is why we have built our entire range to cater to these three concerns for all skier types, from World Cup to convenience. Every boot we

# AnATOMIC FIT

make embodies this design philosophy: the boot must FIT the way the consumer expects it, it must PERFORM to their expectations and provide the appropriate level of COMFORT they are looking for. But for us simply providing a boot with the appropriate Fit, Performance and Comfort level is not enough. We want to deliver additional features such as i-Flex and our Enduro Chassis, which genuinely enhance the skier's experience.

## FIT



**93/95 mm**  
WC FIT



**98 mm**  
PRO FIT



**100 mm**  
HI-PERF FIT



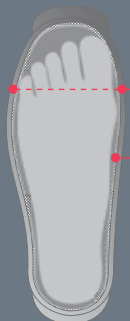
**102 mm**  
SPORT FIT



**104 mm**  
COMFORT FIT



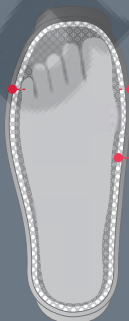
**102-6 mm**  
LIVE FIT



Minimal Comfort Space

Thin dense lining  
Maximum Hold & Sensitivity

**LOW VOLUME**  
93 mm  
**ANATOMIC**  
**WORLD CUP FIT**



Maximum Comfort Space

Thick Cushioning Lining

**HIGH VOLUME**  
104 mm  
**ANATOMIC**  
**COMFORT FIT**



Maximum Adaptive  
Comfort Space

Thick Cushioning Lining  
4 Way Stretch Forefoot

**ADAPTIVE VOLUME**  
102-106 mm  
**LIVE FIT**

# BURNER

Until now, high performance all-mountain skiers were forced to ski in painted race boots that offered no advantage to skiers venturing off the groomed terrain. The Burner is the only boot to provide true advantage and benefit to the skier seeking fun in all snow types.

## BURNER **DNA**



1-COMPONENT SHELL



98 mm LAST  
(ON 26.5 MP)



1 mm OFFSET SHELL



0° SHELL ROTATION



FORWARD LEAN ANGLE 16-18°



## ► **ENDURO CHASSIS**

The only boot concept on the market specifically designed to work with today's wider all-mountain skis. The 5 mm lifted construction provides the skier with increased leverage which makes wider skis more maneuverable on and off piste.