

# ATB

## ARTICULATED TITANAL BANDING

**TITANAL** - ADDED HORSEPOWER TO THE SKI WITH UNCOMPROMISING PERFORMANCE.

**ELASTIC COMPOUND LAYER** - ALLOWS FOR SKI TO ENTER THE TURN WITH EASE, YET COMPRESSES AND RELEASES EVEN MORE ENERGY THAN A TRADITIONAL TI LAYER.



# THE ZERO SERIES

---

INTRODUCING

## THE STRANGER

---

PROGRESSIVE SKI DESIGN,  
MERGING CARVING WITH  
FREESTYLE AND FREERIDE.



## THE WHITEWALKER

---

SAMMY'S HOLY GRAIL.

A LIGHTWEIGHT, CHARGING POWDER  
TWIN MADE FOR CREATIVE SKIING IN  
BIG BOY TERRAIN.

---

## EST POWDER ROCKER



Rocker tip and tail combined with flat camber underfoot provides the ultimate in smooth, pivotable powder turning with unmatched float.

## EST FREERIDE ROCKER



Fore body rocker and extra tip-taper combine to create EST for optimized float in the soft stuff. Positive camber under foot with no tail rocker ensures these skis stay on rails when carving is the priority.

## EST ALL MTN ROCKER



Rocker is paired with tapered sidecuts both tip and tail provide flotation in soft snow as well as forgiveness in turn shape. Camber underfoot maintains edge-hold on the hard pack.

## AR NOSE ROCKER



A Traditional sidecut is paired with tip rocker and standard camber for easier turn initiation without compromising edge hold.

## AR FREESTYLE ROCKER



Rocker tips and tails are combined with positive camber under foot to allow the ski to charge with ease through unpredictable snow and maintain a solid carve when asked to do so. Turn the whole mountain into your playground.

## POSITIVE CAMBER



Traditional camber engages the tip and tail of the ski throughout the turn shape, enhancing ease of entry into, and exiting the turn, for the ultimate in a solid edge hold.

## CARUBA CORE



Our lightest wood species creates the best up-hill feel while retaining the power and dampness required in descending the gnarliest of terrain. This core makes no concessions in performance in its quest to be ultra-light.

## HYBRID CARUBA CORE



A combination of lightweight woods and full-length hardwood stringers, the Hybrid Caruba core creates the ultimate in weight savings, agility and maneuverability without sacrificing security or dampness.

## POPLAR ASH CORE



Lightweight Poplar is combined with higher density full-length Ash stringers to create an impossibly lively ski that has all the power needed for boosting to new elevations.

## POPLAR CORE



Stability, power and ease are paramount in this 100% Poplar wood core. For those looking for predictability and smoothness the Poplar core delivers in all snow conditions.

## INJECTZONE CORE



Consistency is king with this composite injection core, guaranteeing every ski is identical to the next with feel and performance.





#### **SMEAR TECH**

A uniquely 3D Beveled base in the tip and tail creates a unique feel in all snow conditions. Less likely to catch in crud, self-centering in deep snow and un-catchable on take-offs, Smear Tech lets you float effortlessly whether sliding forwards, backwards, left or right



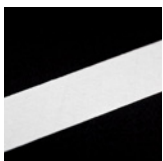
#### **COMP BASE**

Sintered UHMW polyethylene with added carbon aids in speed and durability on snow.



#### **TITANAL**

This blend of Zinc Aluminum acts as the shock absorber inside the ski, quieting bumps and chatter to give unparalleled stability and confidence at all speeds. When a little extra weight is acceptable we apply 2 full length, full width sheets of Titanal.



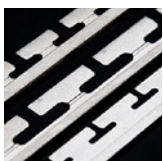
#### **LAMINATE MATRIX**

A directional layering of fiberglass dictates the flex pattern and torsional rigidity to create the ultimate in quick response, forgiving and lively skis.



#### **CARBON STRINGERS**

Used either full length or in specific locations, specially placed Carbon stringers add pop and stiffness without adding weight or thickness.



#### **1.7 IMPACT EDGE**

Light and strong, these heat-treated edges effect the feel of the ski minimally to ensure a snappy, lightweight feel for the skis.

#### **2.0 IMPACT EDGE**

When weight savings are needed but 1.7 cannot be used, the 2.0 Impact edge is the go-to for maintaining ski stiffness while reducing weight

#### **2.2 IMPACT EDGE**

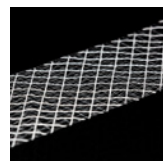
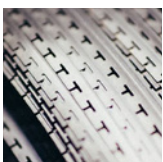
Heat treated and built to avoid excess weight while maintain durability, this edge gives the best balance of durability and feel of our whole collection

#### **2.4 IMPACT EDGE**

Oversized edge used specifically for demanding rental and demo environments, this edge maintains the lifetime of a ski

#### **2.5 IMPACT EDGE**

Oversized and specially heat treated, this edge is built to resist impact damage in the most demanding situations



#### **ADAPTIVE MESH**

A variable angle weave optimizes vibration damping along the length of the ski to make the ski more damp, stable and tough without adding weight. In the ends of the ski, the weave runs nearly tip-to-tail, filtering chatter and tip bounce. Underfoot, the weave runs nearly side-to-side, filtering vibration introduced through the edges either by ice, bumps and crud. Without additional weight, Adaptive mesh provides a smoother ride.



#### **INTELLIGRID**

Integra Mesh laid with carbon absorbs vibration in the ski tip to smooth the ride and adds kick to gas the ride



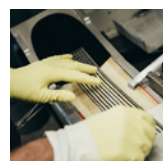
#### **TAPER TOPS**

A slow and meticulous process of 3D milling of our wood-cores adds up to increased performance in faster edge-to-edge and more forgiving feel. Weight around the perimeter of the skis is reduced for a more maneuverable and livelier ski. A thickened profile down the center of the ski retains torsional rigidity and flexural stiffness for powering through turns or untracked stashes. Ski longer, harder thanks to Taper Top technology.



#### **TI BINDING DAMPENER**

Below the binding, a sandwich of rubber, Titanal and finally more rubber work to dampen vibration that otherwise chatters into your boots and shortens your day. Ski bell-to-bell thanks to the damping provided by our Ti binding dampener.



#### **CK STRUTS**

Carbon and Kevlar stringers used in the tip and/ or tail to add pop and extend life.



#### **ATB - ARTICULATED TITANAL BANDING**

**TITANAL** - ADDED HORSEPOWER TO THE SKI WITH UNCOMPROMISING PERFORMANCE.

**ELASTIC COMPOUND LAYER** - ALLOWS FOR SKI TO ENTER THE TURN WITH EASE, YET COMPRESSES AND RELEASE EVEN MORE ENERGY THAN A TRADITIONAL TI LAYER.

ARMADA  
SKIS.

ARMADA  
SKIS.

ZERO  
BONE EDGELESS  
180cm 100/100/100 8 13.6

ARMADA  
SKIS.

ZERO  
STRANGER 180cm  
100/100/100 8 13.6

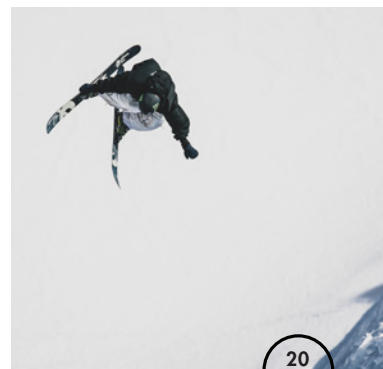
M E N S

## ZERO SERIES

A program rooted in Armada's founding principles, Zero is our Innovation Lab. Serving as the incubator for athlete ideas, Zero provides us with the freedom to just create.

The driver behind this collection is the very reason Armada exists: to best serve our athletes and challenge industry standards. From helping Tof Henry design skis to redefine Big Mountain skiing, to eliminating any risk of hang-ups for BDog in his new edgeless model... Zero is but one thing only: uncompromising.

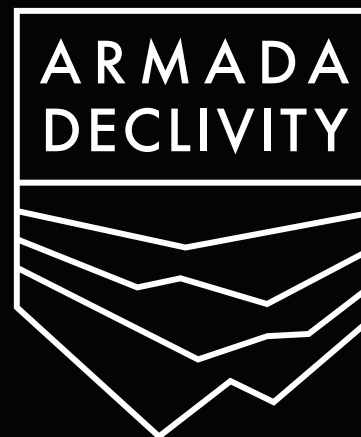
From our athletes and in-house team, we're excited to bring these ideas and experiences to a wider audience.



20  
21



INTRODUCING



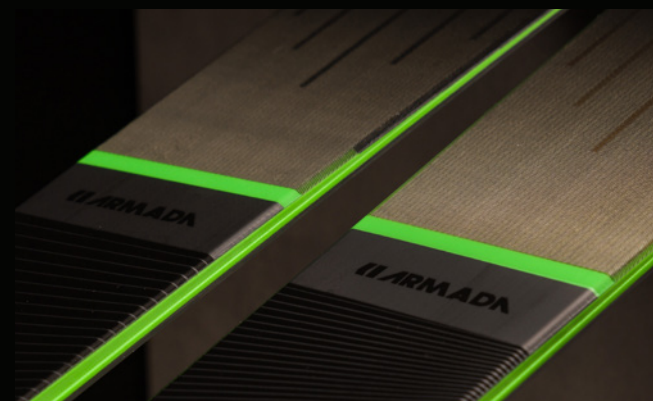
20  
21

## DECLIVITY SERIES

An All-New All Mtn Collection, designed from the ground up with a no-holds-barred technical approach to fit the needs of the modern resort-based charger.

Because skiing is for everybody.

Change my mind.







20  
21

M E N S

## TRACER SERIES

The TRACER SERIES tells the ski world we like to do things differently here at Armada. Even though the focus lies on a stable and predictable ski in versatile conditions, we added subtle rocker and taper regions to keep the Tracer series nimble, playful and able to release the tail on command. From lightweight freeride, to high altitude exploring, to ultra-light touring, this 4-piece series is built for skiers that paint outside the lines on the uphill, sidehill, and big mountain downhill.



M E N S

## SIGNATURE SERIES

Our signature athletes push the envelope year after year, and we believe their skis should too. Designed to the exact specifications of skiing's most creative trio, our SIGNATURE SERIES echoes the influence of Tanner Hall, Henrik Harlaut, and Phil Casabon, delivering professional performance from the puckering spines of AK to the icy streets of Quebec and every type of terrain in between.







20  
21

W O M E N S

## VICTA SERIES

Directional all-mountain skis that cover four different waist widths, the VICTA SERIES is built with performance in mind. Ranging from titanal-infused all mountain chargers to lively piste crusaders. This is one ride you don't want to miss.





## WOMENS

### TRACE SERIES

After breaking resort boundaries last year, our off-piste minded TRACE SERIES is back for seconds, serving up a quiver of directional backcountry skis that might have you ditching the lift line for good.



ALL NEW

## TRACE 98

RA0000194+



### EVERYDAY OFF-PISTE SKI.

Cut from the same cloth as it's big sister, the Trace 98 touts the same lightweight prowess courtesy of it's all new Caruba Core. The core lends the increased maneuverability you need to slash every nook and cranny of your line. Built with the backcountry journey-woman in mind, the 98 features metal-reinforced binding pads to absorb bumps and vibrations, plus provide a little extra security when looking for fresh snow beyond resort boundaries.

#### CONSTRUCTION

##### LIGHTWEIGHT CARUBA CORE

AR75 Sidewall  
EST All Mtn Rocker  
Comp Series Base  
1.7 Impact Edge  
Ti Binding Reinforcement  
Adaptive Mesh

#### FLEX PATTERN

TIP	WAIST	TAIL
6.5	7	7.5

#### SPECS

LENGTH	TIP	WAIST	TAIL	RADIUS	WEIGHT
156cm	125	98	118	16.5	1425g
164cm	127	98	119	17	1475g
172cm	130	98	121	17.5	1550g



20  
21