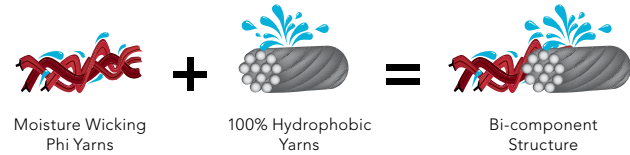


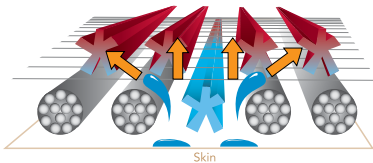
HOW PHASIC™ TECHNOLOGY WORKS

Phasic™ base layer technology is engineered for superior performance during stop-and-go interval activities. Phase garments are designed to retain less moisture and dry faster, keeping the user drier and more comfortable.



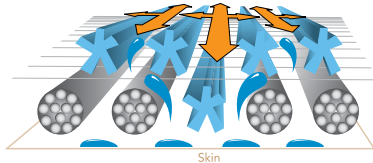
STAGE 1 - ACTIVE/WICKING PHASE

Entering an active phase, Phi yarns rapidly pull moisture away from the skin while the hydrophobic yarns stay dry.



STAGE 2 - INTENSE/DISPERSION PHASE

Phi yarns work to disperse moisture across the entire garment, helping to regulate body temperature. Hydrophobic yarns stay dry and limit the fabric's ability to hold moisture.



PHASE BASE LAYER FABRIC WEIGHTS

PHASE SL



Superlight base layer for high output interval activities in warmer weather.

PHASE SV



Severe base layer for high output interval activities in cold weather.

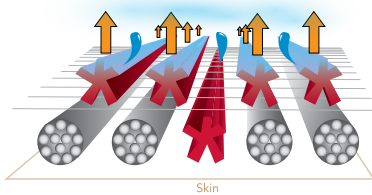
PHASE AR



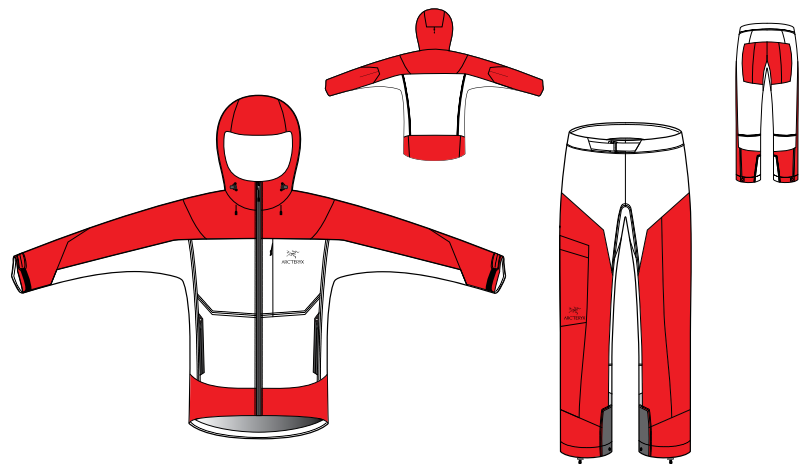
All-round base layer for high output interval activities in cold weather.

STAGE 3 - REST/DRYING PHASE

Hydrophobic yarns, along with the broadly dispersed moisture from the Phi yarns, combine to allow Phasic™ fabric to dry quickly during a rest phase, keeping the user warm and comfortable.

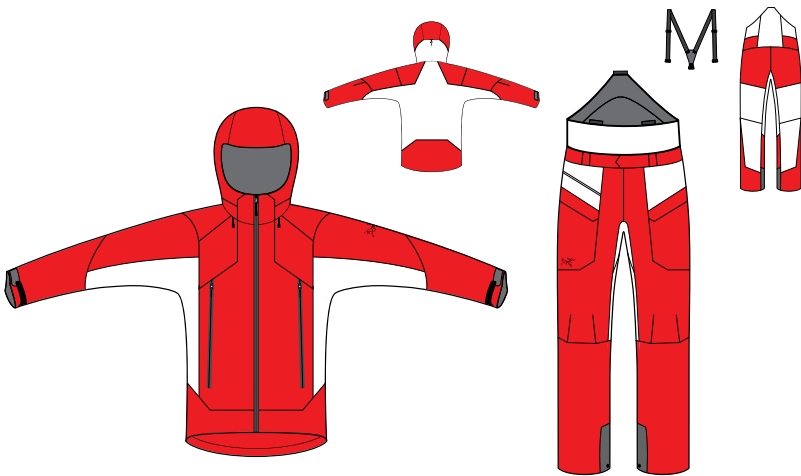


COMPOSITE GORE® FABRIC TECHNOLOGY



ALPHA COMP HOODY/ALPHA COMP PANT

White box: GORE® FABRIC TECHNOLOGY
Red box: FORTIUS™ 1.0



LITHIC COMP HOODY/LITHIC COMP PANT

White box: GORE® FABRIC TECHNOLOGY
Red box: TRUSARO™

TECHNOLOGIES AND FEATURES INDEX

Blue text to indicate technical features described here

BOX WALL CONSTRUCTION

Box wall construction is used to create a consistent layer of down insulation. In this method mesh walls (mesh baffles) are sewn between the inner and outer layers of the garment to create 3-dimensional chambers to contain the down. Each chamber allows the down to loft to its full potential and the even thickness, eliminates cold spots ensuring maximum thermal efficiency. The use of mesh walls adds to the material weight of the garment so this method is only used in more heavily insulated garments where the efficiency gains off-set this added weight.

DOWN COMPOSITE MAPPING™

As an insulation material, down is valued for its significant warmth and compressibility. However, moisture causes the down to lose its loft and therefore its warmth. Down Composite Mapping™ places down at the core of the garment and synthetic CoreLoft™ insulation in areas that are prone to moisture buildup: hood, collar, hemlines and cuffs. This placement of materials makes it possible to integrate down insulation into a greater variety of weather conditions.

DOWN CONTOUR CONSTRUCTION™

Involves the construction of an inner liner using synthetic fibre fill (CoreLoft™ Compact) and down insulation, placed inside a GORE-TEX® waterproof/breathable shell. The CoreLoft™ Compact layer sits next to the shell, protecting the down-lined inner surface from any moisture generated inside the jacket. Down Contour Construction™ adds thermal value, eliminates negative air space and makes use of Down Composite Mapping™ to integrate down insulation into a greater variety of weather conditions. *Patent-pending

DRYCUFFS™

Die-cut weatherproof wrist closure that is laminated to eliminate threads that absorb water, provide precision, security and easy use with gloves or mitts. There is less long term abrasion, increased strength and waterproofness.

e3D PATTERNING

Refers to advanced gusseting and articulation in our garment patterning that creates better range of motion in key areas. e3D enhances your ability to move freely and can be found in many of our Trim, Athletic and Expedition fit garments.

FLATLOCK SEAMS

Flat locking creates a low profile seam that sits flat against the body, minimizing bulk and increasing comfort.

HEMLOCK™

Designed to prevent your jacket from riding up while climbing, this removable foam insert installed at the hem, "locks" it under your harness.

HYBRIDS

Hybrid products use a combination of similar fabrics in order to maximize the performance benefits of each textile. For example, the placement of a more supple GORE-TEX® technology in the core area for greater freedom of movement, combined with a harder-wearing GORE-TEX® technology in areas of high impact.

LAMINATED CHIN GUARDS

Our solution to the chafing that can occur on the chin from a hard zipper closure is the lamination of soft protective fabric to the surface, a solution that is light, functional and compact.

LEGWRAP™

LegWrap™ is an adjustable elastic strap that wraps around your lower leg to cinch the pant leg inward. This keeps the fabric away from crampons while climbing or walking, reducing the risks of snags. It is accessed via the interior of the pant and can be removed when not needed.

MAPP-MERINO ADVANCED PERFORMANCE PROGRAM

MAPP fabrics use Merino wool's natural properties to create a comfortable personal environment. Merino wool absorbs moisture into the chemical structure of the fibre, moving it away from the skin and promoting the transmission of perspiration. Additionally, Merino produces a small but perceptible amount of heat through 'heat of sorption', a chemical reaction that occurs when the water vapour binds to the chemical structure of the MAPP Merino inner core.

MICRO SEAM TECHNOLOGY

A combination of several different elements, micro seam technology and the craftsmanship behind it sets Arc'teryx GORE-TEX® garments apart from the rest. We use a very high stitch count to increase seam strength. This allows the seam allowance to be minimized, creating a suppler garment with less bulk. This also permits the use of narrower seam tape and less glued surface area, increasing overall breathability. The final result is a securely sealed shell that is supple, compact, easily packed and as breathable as possible.

POWDERCUFF™

An integrated elasticized cuff that fits over boots and prevents snow from entering from the bottom of the pant.

POWDERGUARD™ VENTS

Zippered vent opening found in the pit zips of jackets and side openings of pants. A mesh lines the opening of the vent blocking snow entry but providing ventilation. Found only in Whiteline products.

RACE POCKETS

Constructed to keep the contents of the pocket close to the body and stable so that movement is minimized, Endo Race Pockets are a system of 5 pockets meant to keep small items at hand while racing or during intense training. Two small hip pockets, plus three pockets on the back: zippered closures secure phone, mp3 player or keys, while stash pockets allow quick removal and replacement of gels, energy food, electrolyte tablets etc. throughout a run.

RECCO® REFLECTOR

Attached inside Whiteline garments, the RECCO® rescue reflector is part of a technology system employed by ski resorts and mountain rescue teams that use RECCO® detectors. The RECCO® reflector bounces back a signal that directs the rescuer straight to the reflector, helping locate a lost or buried person. RECCO® reflectors do not prevent avalanches, nor do they guarantee locating or the survival of a buried or lost person. Reflectors are also not a substitute for an avalanche rescue beacon.

SLIDE 'N LOC™

Fasteners found on select Whiteline products that attach jacket to pants for a secure protective system in deep snow. The fasteners attach with a snap, then slide and lock motion.

WATERTIGHT™ ZIPPER

Conventional shells use zippers with bulky and excessive weatherproof flaps. After years of research and development, we introduced a urethane-coated, long lasting and smooth operating WaterTight™ zipper that shed the weight and bulk of these storm flaps.

ZIPPER GARAGE

A weatherproof home for zipper sliders maintains the integrity of the weatherproof seal provided by the WaterTight™ zipper. The zipper garage is a molded structure that prevents moisture from entering.

HOODS

DROPHOOD™

A full standalone collar with a separate hood. The DropHood™ can be cinched with one-handed drawcords, allowing it to rotate with the head without obscuring vision when turning from side to side. Front zipper height varies according to the intended use; protects chin and neck from wind, snow, and rain.

INSULATED STORMHOOD™

Insulated hood designed for full weather protection. The insulated StormHood™ can be cinched with one-handed drawcords, allowing it to rotate with the head without obscuring vision when turning from side to side. Front zipper height varies according to the intended use; protects chin and neck from wind, snow, and rain.

SCUBAHOOD™

Trim fitting hood meant to hug the head, fit under helmets and stay in position without the use of drawcords.

STORMHOOD™

Hood designed for full weather protection. The StormHood™ can be cinched with one-handed drawcords, allowing it to rotate with the head without obscuring vision when turning from side to side. Front zipper height varies according to the intended use; protects chin and neck from wind, snow, and rain.

STOWHOOD™

A full standalone collar with an integrated, compact hood that stores in a zippered compartment within the collar. The hood can be cinched with one-handed drawcords, allowing it to rotate with the head without obscuring vision when turning from side to side. A standalone collar provides protection independently of the hood and sits at mouth level when fully zipped.

HARDGOODS

AC² (ADVANCED COMPOSITE CONSTRUCTION)

FUSION POINT

Custom molded urethane attachment points that maintain flexibility under extreme temperatures. These can be bonded directly to ACT™ Fabric as desired, without requiring a seam.

APERTURE TWIST

A chalkbag closure used on the Aperture chalkbags. This closure opens/closes with a twisting motion that completely seals the chalk inside the chalkbag during storage and transportation. Aperture closures are held closed with a snap, making them simple to use and easy to open with one hand.

GRIDLOCK™

The GridLock™ is a simple, sturdy shoulder strap adjustment system. On the pack body is a multi-position receiver that accepts the shoulder strap harness system, allowing for custom fit both vertically and horizontally. Shoulder straps are positioned precisely as the user desires.

HDFB

High density foam back (HDFB) suspensions offer comfort and a precision fit for lighter loads. Foam panels are integrated into the back panel to help support the load while also providing padding from hard objects inside the pack.

HYDROPORT

A built-in port for drinking tubes that maintains the integrity and weatherproofness of the pack.

LOAD TRANSFER DISC™

Made from molded urethane and attached to the hipbelt, the Load Transfer Disc™ is an innovative rotating disc that allows the hipbelt and hips to move freely, eliminating excessive movement of the pack while hiking. Exceptionally efficient on grades, the effects of the Load Transfer Disc™ can be locked off so the hipbelt doesn't shift during travel.

P'AX

One-handed ice axe carry system that allows quick removal and safe storage of ice tools.

ROLLTOP™ CLOSURE

Easy to use with gloved hands, this closure system seals out moisture and has a wide mouth opening that allows quick access to pack contents.

TRIDEX™

Used in glove construction, TriDex™ is a three lobe pattern that maps individual finger shape to give exceptional dexterity and fit.

WARP STRENGTH™ TECHNOLOGY

Used in harness construction, WST™ spreads out the load-bearing warp yarns to create a harness that is exponentially lighter and more supple than the original material. WST™ harnesses distribute weight and pressure evenly from edge to edge, making them remarkably comfortable.

WEAR SAFETY MARKER

Coloured thread that indicates significant wear on harnesses and is a signal to replace the harness for safety reasons. The markers are incorporated into the belay loop and both tie-in points.

WINGMAN™ POCKETS

Side pockets that sit low on packs, wrapping toward the hips, with closures that can be accessed readily.

HARDGOOD MATERIALS

Prefixes are an Arc'teryx system to identify the attributes of our pack fabrics. Each element describes a property that defines the nature of the fabric.

n (nylon)	p (plain weave)	r (rip-stop)
P (polyester)	s (stretch)	mr (mini ripstop)
## (denier)	f (faile)	b (basket weave)

16MM WEBBING

2PLY 840D X 840D nylon 6,6 HT
This custom woven tube webbing provides strength and suppleness to our harness leg loop and belay loop.

20MM WEBBING

1PLY 840D X 420D nylon 6,6 HT
The uneven construction of this webbing provides a very tight structure construction that is resistant to abrasion. The smooth nature of this webbing reduces fuzzing and makes buckle adjustment easy.

6005-T6 / 7075-T6 ALUMINUM STAYS

Stay material is 6005-T6 aluminum in varying widths depending on pack. 7075-T6 aluminum is extremely light and strong.

6005-T6 EXTRUDED ALUMINUM M-BAR STAYS

M-bar stays use less material to provide rigid structural support.

N70r: NYLON 6 RIPSTOP

100% nylon / 100% polyurethane coating
A lightweight, tightly woven textile with polyurethane coating for additional water resistance.

P75p: POLYESTER PLAIN WEAVE

100% polyester / 100% polyurethane coating
A super lightweight non-absorbent polyester pack cloth, constructed with a plain weave for maximum durability. Coated with extra-stout 2 oz/yd² polyurethane.

N100mr-HT NYLON 6,6 MINI RIPSTOP

100% high tenacity nylon / 100% polyurethane coating inside, silicone coating outside. Ideal for light and fast performance products, this super lightweight textile features a high thread count mini ripstop weave for an incredible strength-to-weight ratio. Polyurethane coated on the inside for seam stability and waterproofness, and silicone coated on the outside for increased tear strength and moisture shedding.

N210p NYLON 6 PLAIN WEAVE

100% nylon / 100% polyurethane coating
This lightweight plain weave textile is used for low-wear lining details of certain packs to reduce weight while providing suppleness and with good abrasion resistance.

N210p-HT NYLON 6,6 PLAIN WEAVE

100% high tenacity nylon / 100% polyurethane coating
High density plain weave fabric with a DWR finish and 2000mm PU coating on the back. Special blended high tenacity nylon weave increases durability and tear-resistance.

N210r-HT NYLON 6,6 RIPSTOP

100% nylon / 100% polyurethane coating
High density single ripstop fabric with a silicone face coating and 3500mm PU coating on the back. Balanced weave increases durability, tear-resistance and weatherproofness. Custom fabric made to Arc'teryx specifications.

N400r-AC² NYLON 6 RIPSTOP

A 400 denier 100% nylon 6 ripstop pack fabric that is coated with urethane on both sides, creating an air-impermeable textile that is durable and 100% waterproof. The urethane coating facilitates bonded construction, and the white pigmented inside layer reflects light for visibility into the pack bottom.

N400p-AC² NYLON 6 PLAIN WEAVE

100% nylon / 100% polyurethane coatings
A plain weave version of our venerable AC2 pack fabric. Coated with urethane on both sides to create a durable, air-impermeable fabric that is 100% waterproof

N420b NYLON 6 BASKETWEAVE

100% nylon / 100% polyurethane coating
This medium weight pack cloth is used for robust pack bodies, high wear areas, and pack suspension construction.

N420p-HT NYLON 6,6 PLAIN WEAVE

100% high tenacity nylon / 100% polyurethane coating
This medium weight pack cloth is used for robust pack bodies, high wear areas, and pack suspension construction. Balancing weight with abrasion resistance, this textile offers excellent durability and snow shedding properties. Coated with 1.5oz/yd² polyurethane.

N500p-HT ATY NYLON 6,6 PLAIN WEAVE

100% high tenacity nylon / 100% silicone coating / 100% polyurethane coating
Exceptionally durable air-textured yarn fabric with silicone treated exterior, PU coated interior, and low reflectivity. Coatings increase dirt, snow and water shedding capacity.

N500p NYLON 6 PLAIN WEAVE

100% nylon / 100% polyurethane coating
We specifically developed this balanced weave nylon canvas using hollow core yarns to create a tough, light pack fabric for everyday use. Water resistant outer finish sheds rain and light snow. Coated with 1.5oz/yd² polyurethane.

N630p-HT NYLON 6,6 PLAIN WEAVE

100% high tenacity nylon / 100% polyurethane coating
Polyurethane coating constructed with tight Oxford plain weave, this tough pack cloth delivers great abrasion resistance, tear strength, and snow/dirt shedding properties. Coated with 1.5oz/yd² polyurethane.

N840b NYLON 6 BASKET WEAVE

100% nylon / 100% polyurethane coating
High density nylon pack cloth fabric with high abrasion resistance. Basket weave construction is tightened by yarns with a twist, resulting in exceptional smooth surface, a mechanical property to increase durability.

N1260-HT NYLON 6,6 BALLISTICS WEAVE

100% high tenacity nylon / 100% polyurethane coating
Constructed by combining two 630D high tenacity nylon yarns into an effective 1260D ballistics weave yarn, this textile provides exceptional abrasion resistance, tear strength, and snow/dirt shedding properties. Coated with 1.5oz/yd² polyurethane

P200p POLYESTER PLAIN WEAVE

100% polyester / 100% polyurethane coating
This medium density, light duty fabric is used for linings and has both a DWR finish a water resistant coating to help keep out moisture.

AEROFORM™

100% polyester
A 900-denier monofilament mesh that is thermoformable and can be heat-set into three dimensional peak-and-void shapes for back panels. Air permeable, non-absorbent, durable, flexible and compression resistant.

BONDED NYLON THREAD

#46, #69 bonded nylon thread is used for bartacking and seams. We use grey #92 bonded nylon thread for pack closing (sewing the back panel to the pack body) to provide superior strength on critical seams. All stress points are bartacked or backstitched and we bind all seams to prevent fraying.

COIL ZIPPERS

Our coil zippers come from YKK, the most trusted source for zippers in the industry. We use only their highest end products. Very strong, light and smooth sliding in all weather conditions.

DVEL

We use high quality closed cell polyethylene foam in the outer layer of our thermoformed hipbelts.

EVON

The main closed cell foam for our packs. It's used in our hipbelts, shoulder straps, backpanels, and lumbar pads. It vigorously opposes compression damage and will not freeze at any temperature you can live through.

EVON PERFORATED FOAM

Made of the same resilient Evon closed cell foam, this version has been perforated to allow airflow and promote evaporative cooling.

HARNESS BUCKLE

7075-T6 Anodized aluminum. Forged top bar. Stamped bottom bar. Our 20mm and 16mm buckle are constructed from a high grade of aluminum and are finished with an anodized coating. The top bar is forged to allow a smooth radius. This radius reduces webbing wear and increases strength.

HD 80 FOAM

A high-density polyethylene foam laminated into our back panels to create a strong, rigid and extremely lightweight.

HDPE FRAME SHEETS

High density polyethylene (HDPE) is used for our pack framesheets. It is stress-relieved to prevent warping, providing a stiff but light platform.

HYPALON™

Used for die-cut details such as Zipper Garages™ and board holders, resulting in clean lines and bombproof durability.

OPEN CELL FOAM

A high quality open cell foam is used in hipbelts, shoulder straps and lumbar pads. This foam has an ILD rating of 160 (measure of force required to compress a set area of foam); most open cell foams have a rating near 80 – 100.

STRETCH-WOVEN MATERIAL

We use stretch woven material throughout our packs on body contact surface areas (hipbelt, back panel, and inside of shoulder straps). This fabric offers superior durability over commonly used stretch knit fabrics.

STRETCH MESH

95% nylon, 5% elastane
A tough 840 denier four-way stretch mesh that is both durable and resilient.

SPACERMESH™

A breathable material used as shoulder strap / climbing harness interior fabric or for some back panels that allows for air flow and wicks moisture so that it can dry faster.

VAPOR MESH™

100% polyester
Textured yarns with dual direction monofilaments. This fabric is a loosely woven fabric with a uni-directional stiffness. The monofilaments provide stiffness in one direction that equals support and comfort when used in harness leg loops. Its open nature provides airflow.

WATERTIGHT™ ZIPPERS

The world's first WaterTight™ zippers to pass the W.L. GORE® extreme wet weather test.

ZIPPER SLIDERS

All zipper sliders are the highest end nickel-plated or powder coated YKK.

FABRICS

We have selected premium fabrics to deliver ultimate protection and performance. These fabrics and our superb designs combine to offer the finest quality products available today.

2.7 OZ THERMATEK™

100% nylon face / 2.7 oz/yd², 92g/m²
Exclusive to Arc'teryx, this insulation combines a high tenacity 30 denier nylon fabric laminated to a 2.7 ounce continuous fibre fill insulation, which is then completely immersed in DWR.

AERIEL™

100% polyester / 4.4 oz/yd², 150g/m²
Lightweight mesh with high air permeability, wicking properties and slight mechanical stretch for comfort mobility. Polygiene® controls odour. UPF 20 sun protection

AERIS™

88% polyester, 12% elastane / 3.9 oz/yd², 132g/m²
Single jersey pointelle knit has a UPF 15 rating. Tight gridded mesh with some stretch.

AIRETICA™

100% nylon / 1.0oz/yd², 34g/m²
Tightly constructed, high tenacity, 20x10 denier ripstop nylon.

AIRETICA™ LT

100% nylon / 0.8oz/yd², 28g/m²
Tightly constructed, high tenacity, 10x10 denier, double ripstop nylon.

ALPENEX™ HEATHERED

100% polyester / 9.7 oz/yd², 330g/m²
A brushed back knit polyester fabric that looks like a wool sweater, but is engineered to provide the versatility, warmth and comfort of a technical fleece.

ALPENEX STRIE™

100% polyester / 9.7 oz/yd², 330g/m²
A brushed back knit polyester fabric that looks like a wool sweater, but is engineered to provide the versatility, warmth and comfort of a technical fleece.

ALTAVELA™ STRETCH

74% polyester, 26% elastane / 8 oz/yd², 273g/m²
A single knit polyester jersey fabric with high performance stretch.

APGAR™

57% cotton, 36% polyester, 7% elastane / 7.5oz/yd², 255g/m²
Stretch baby French terry knit technical fabric with soft natural cotton content. Polyester adds durability, stretch content retains shape. Slightly heathered visual appearance.

ARIAx™

77% polyester, 23% elastane / 5.1oz/yd², 174 g/ m²
Single jersey knit, back side peached with wicking finish has a UPF 50+ rating for sun protection. High stretch content.

BENETT™

66% cotton, 31% nylon, 3% elastane / 3.4 oz/yd², 114g/m²
A lightweight poplin weave with both comfort and function. The cotton helps keep things cool, while the elastane adds a small amount of 2-way stretch. Nylon content keeps the weight down and enhances strength and durability. Water repellent finish.

BONDED POLYFLEECE

100% polyester / 8 oz/yd², 228 g/m²
A highly breathable stretch woven polyester face, with wicking polyester knit fleece interior.

BONDED NYLON POLY GRID FLEECE™

85% nylon, 15% elastane / 100% polyester
8.6oz/yd², 293g/m²
A lightly breathable bonded fabric with mechanical stretch for active use. Outer is made with a durable 2-way stretch nylon and the micro check fleece backer features hydrophobic polyester to promote wicking while supplying moderate warmth. DWR finish for added water repellency

BURLY™ DOUBLE WEAVE

50% nylon, 43% polyester, 7% elastane
8oz/yd², 275g/m²
A four way stretch woven fabric that combines superior strength and durability of a nylon face with the comfort of a micro fibre polyester backer. DWR finish for added water repellency.

CARDEN™

62% cotton, 38% nylon / 5.9 oz/yd², 201 g/m²
Nylon reinforced cotton weave with a waxed finish.

CETUS HIGH LOFT

100% polyester / 8.17 oz/yd², 277 g/m²
A double-faced fleece with a compact inner surface and a high loft external finish for excellent warmth and durable pill resistance. Highly breathable and quick drying.

CIRCUIT™

100% polyester / 3 oz/yd², 103g/m²
A four way mechanical stretch plain weave woven fabric made with continuous textured polyester filaments. Long lasting Nano DWR water, oil/stain repellent.

COBBLECOMB™

94% polyester, 6% elastane / 8.7oz/yd², 295g/m²
A hard wearing mid-weight fleece. This fabric has a smooth outer surface featuring a subtle twill-like texture, while the plush, fully brushed fleece back provides great lofted warmth.

COLIBRI™

100% nylon / 1.7 oz/yd², 59g/m²
40D non-stretch nylon mini ripstop taffeta with a DWR face finish. High wind resistance and very light weight fabric with excellent wind and water repellency.

CORELINE™

100% polyester / 5.45oz/yd², 185g/m²
This high-gauge knit backer fabric used to line Whiteline/24 jackets and pants insulated with Coreloft™. The density of Coreline™ makes it an effective fabric for trapping warmth and smoothly slides on/off other layers without binding.

CORELOFT™ INSULATION

100% polyester / 40g/m², 60g/m², 80g/m², 100g/m², 120g/m², 140g/m²
Made with highly crimped multi-denier siliconized polyester yarn, this lightweight, breathable, and thermally efficient, 100% polyester staple fibre it is very compressible and has excellent loft retention. Comes in the following six weights:
1.18 oz/yd², 40g/m² 1.8oz/yd², 60g/m²
3.0oz/yd², 100g/m² 2.4oz/yd², 80g/m²
4.2oz/yd², 140g/m² 3.5oz/yd², 120g/m²

CORELOFT™ COMPACT INSULATION

100% polyester / 40g/m², 60g/m², 80 g/m²
Highly crimped, multi-denier siliconized polyester yarn that has undergone a special process which reduces the thickness of the material by 50%, without reducing its insulation value by the same amount. Lightweight, breathable, thermally efficient 100% polyester fibre.
1.2oz/yd², 40g/m² 1.7oz/ yd², 60g/m²
2.4oz/yd², 80g/m²

CRESTA™

89% nylon, 11% elastane / 4.4 oz/yd², 150g/m²
Mid weight nylon plain weave fabric with elastane for stretch and mobility. This hardwearing and breathable fabric has a DWR finish for added water repellency and stain resistance.

CRYSTALIS™

87% Polyester, 13% elastane / 4.6oz/yd², 155g/m²
High gauge stretch jersey pointelle knit fabric.
UPF 50+ rating.

DESINO™

50% Merino wool, 50% FR rayon / 4.1 oz/yd², 140g/m²
A soft, luxurious blend of Merino wool and fire resistant rayon provides warmth and comfort in this mélange-look jersey knit.

DIEM™

100% polyester / 3.2oz/yd², 110g/m²
Quick dry, stretch polyester has anti-wrinkle properties. Air permeable with UPF 50+ rating. Easy wear and easy care fabric that packs well. Treated with a wicking finish to assist moisture management.

DRY TECH™

60% cotton, 35% polyester, 5% elastane
5oz/yd², 168g/m²
A plaited pima cotton with elastane and micro-fibre polyester next-to-skin. Provides ultimate comfort with mechanical push/pull moisture management.

DRY WEB FABRIC

100% polyester / 4.5oz/yd², 153g/m²
A stretch double face dobby weave fabric made with continuous textured polyester filaments. Long lasting Nano DWR water, oil/stain repellent.

ENDOLIGH™

100% polyester / 1.9oz/yd², 65g/m²
Super light weight polyester mesh, provides excellent airflow and rapid drying.

ENDOGAUGE™

100% polyester / 3.7oz/yd², 125g/m²
High gauge polyester knit with excellent moisture wicking and UPF50 sun protection.

ENDURAFLEX™

85% polyester, 15% elastane / 5oz/yd², 168g/m²
A four-way stretch twill fabric. Hydrophobic, cool, and smooth against the skin.

ESPANDA™

94% cotton, 6% elastane / 8.2oz/yd², 280g/m²
Soft French terry knit that has a comfortable, casual midweight. Elastane content retains shape and is motion-friendly.

FI™

97% cotton, 3% Lycra® / 3.8oz/yd², 128g/m²
Light weight woven cotton with elastane for stretch and mobility.

FORTIUS™

This four way stretch-woven fabric currently comes in three versions:

FORTIUS 1.0

84% nylon, 16% elastane / 4.7oz/yd², 160g/m²
Four-way stretch-woven nylon/elastane fabric offers air permeable, single layer performance for three-season conditions.

FORTIUS 2.0

49% polyester, 35% nylon, 16% elastane
7.4 oz/yd², 251 g/m²
A membrane-free, air permeable 4-way stretch-woven nylon/elastane fabric laminated to low profile, mid-weight 4-way stretch fleece.

FORTIUS 3.0

65% polyester, 21% nylon, 14% elastane
12.2oz/yd², 414g/m²
A membrane-free, air permeable 4-way stretch-woven nylon/elastane fabric laminated to mid-loft, heavy weight 4-way stretch fleece.

GOSSAMERA™

100% nylon / 1.5oz/yd², 52g/m²
30D mechanical stretch nylon ripstop with an air permeable PU coating and a DWR face finish. A light and breathable stretch fabric with great water repellency and wind resistance.

GRAMAT™

68% cotton, 26% polyester, 6% Lycra / 7.4 oz/yd², 250g/m²
A technical twist on the Cotton Hoody, the plaited knit construction places a hardwearing cotton on the outer surface and a wicking polyester loop next to skin.

HAVEN™

84% polyester, 16% elastane / 5.7oz/yd², 194g/m²
A single knit polyester jersey fabric with elastane and a brushed face.

HELIUS™

100% polyester / 3.3oz/yd², 112g/m²
A lightweight, high-gauge jersey knit textile that is comfortable next-to-skin. Fast drying with a moisture wicking finish to promote evaporation. Breathable and durable with light mechanical stretch. UPF 50+ rating for sun protection.

INVIGOR™

100% polyester / 3.2oz/yd², 110g/m²
Quick dry stretch woven polyester has UPF50+ rating for sun protection. Treated with durable water repellent finish.

JETT™

81% cotton, 19% Modal® rayon / 3.2oz/yd², 108g/m²
A light weight woven cotton shirt material with a touch of Modal® rayon for softness.

KAUSS™

100% polyester / 4-1oz/yd², 140g/m²
A weather-shedding stretch double weave. The tightly constructed face repels wind and water and the lightly textured back enhances next-to-skin comfort.

LIBRO™

100% polyester / 3.1 oz/yd², 106g/m²
A lightweight flat knit mesh with continuous textured polyester filaments and a wicking finish.

LOAM™

72% cotton, 25% nylon, 3% elastane / 5oz/yd², 170g/m²
Mid weight cotton twill with nylon for added strength and elastane for an easy comfort stretch. The face is lightly sanded and features a water and stain repellent finish.

LUMIN™

100% nylon 6,6 / 1.45oz/yd², 49g/m²
Very strong for its weight, this lightweight 20D ripstop taffeta features nylon 6,6 yarns. Lightly breathable with a DWR finish.

LYLAE™

60% cotton, 40% polyester / 4.6oz/yd², 155g/m²
Single jersey knit blend fabric that is soft, comfortable and easy wear. Polyester adds durability.

METRO TECH™ WITH 3XDRY®

60% cotton, 40% polyester / 6oz/yd², 203g/m²
A mid-weight cotton twill weave with mechanical stretch polyester yarns that has comfort and technical function built-in. The cotton provides next-to-skin comfort, while the special polyester adds a decent amount of 2-way stretch. Schoeller Technologies 3XDRY® fabric treatment provides a unique mix of moisture management inside and water repellent finish outside.

MOUNTAIN MERINO KNIT WOOL

95% New Zealand Merino wool, 5% elastane, 8.1 oz/yd², 240g/m²
A double-faced Merino wool/elastane blend that offers warmth in a classic fabric.

NEILSA™

87% polyester, 13% cotton / 3.4oz/yd², 115g/m²
Water repellent taffeta with the softness of cotton and a subtle visual texture.

NYLAZ™

85% nylon, 15% elastane / 4.6oz/yd², 157g/m²
Light yet densely constructed stretch woven fabric provides excellent wind and abrasion resistance along with four way stretch, to allow for athletic mobility. DWR finish.

PHASIC™ SV

92% polyester, 8% polypropylene / UPF 50+
4.2oz/yd², 150g/m²
Double knit textile with mechanical stretch composed of multidimensional polyester yarns that wick moisture laterally to dry quickly, plus polypropylene yarns that have silver-ion encapsulated into the fibre for long-lasting odour control. Plated construction of the fabric means that the interior fabric is a combination of polyester and polypropylene and slightly lofted for mid-level insulation, while the face is 100% polyester, smooth and durably pill resistant.

PHASIC™ AR

87% polyester, 13% polypropylene / UPF 50+
4.3oz/yd², 145g/m²
Double knit textile with mechanical stretch composed of multi-dimensional polyester yarns that wick moisture laterally to dry quickly, plus polypropylene yarns that have silver-ion encapsulated into the fibre for long-lasting odour control. The smooth outer face is durably pill resistant and a lightly lofted interior adds light insulation. Plated construction of the fabric means that the interior fabric is a combination of polyester and polypropylene and lightly lofted for light insulation, while the face is 100% polyester, smooth and durably pill resistant.

PHASIC™ AR-X

87% polyester, 13% polypropylene / UPF 50+
4.7 oz/yd², 158g/m²
Identical to the PHASIC AR™ fabric above, but for a small change to the face side polyester yarns to enhance durability. Slightly coarser (but still smooth), the outer face is even more durably pill resistant than the base layer version and is lightly lofted for enhanced warmth.

PHASIC™ SL

70% polyester, 30% polypropylene / UPF 25
2.9 oz/yd², 98g/m²
Reduced yarn size of polypropylene lends soft touch to 100% hydrophobic jersey knit textile with mechanical stretch. Composed of multidimensional polyester yarns that wick moisture laterally to dry quickly, plus polypropylene yarns that have silver-ion encapsulated into the fibre for long-lasting odour control. Very light weight with a smooth outer face that slides easily under other layers.

POLARTEC® ALPHA®

100% polyester / 2.6oz/yd², 88g/m²
A highly air permeable, lofty fleece knit that provides excellent warmth, but doesn't need the tightly woven fibre proof fabrics used with fibrefill insulations.

**POLARTEC CLASSIC MICRO FLEECE
MARLED HEATHER**

100% polyester / 5.8oz/yd², 197 g/m²
A highly breathable, quick drying, machine washable fleece, with a soft hand feel.

**POLARTEC® CLASSIC 100 MICRO VELOUR
SMALL GRID**

100% polyester / 4.5 oz/yd², 152g/m²
This fabric rapidly wicks away moisture from the skin, while still being highly breathable and ultra-light.

**POLARTEC® POWER DRY GRID WITH
HARDFACE® TECHNOLOGY**

91% polyester 9% elastane / 4.8oz/yd², 163g/m²
Lightweight, thermally efficient voided fleece has great stretch, with HardFace® technology for enhanced abrasion resistance and durability.

POLARTEC® POWER DRY MIDWARMTH GRID™

84% polyester, 16% elastane / 4.7oz/yd², 159g/m²
Lightweight thermal fleece has a smooth face and backside voided grid structure for maximum warmth-to-weight ratio.

**POLARTEC® POWER STRETCH® WITH
HARDFACE® TECHNOLOGY**

88% polyester, 12% elastane / 6.8oz/yd², 230g/m²
A four-way stretch fabric that allows for excellent athletic movement and good breathability to maintain comfort. Some products feature HardFace® Technology for a higher level of abrasion resistance.

POLARTEC® POWER STRETCH®

90% polyester, 10% elastane / 6.8oz/yd², 231g/m²
This four-way stretch fabric allows for excellent athletic movement and good breathability to maintain comfort, while the brushed back adds warmth in colder weather.

POLARTEC® POWER STRETCH® (PRO)

53% polyester, 38% Nylon 9% elastane / 7.1 oz/yd², 241 g/m²
A four-way stretch fabric that allows for excellent athletic movement and good breathability to maintain comfort. Nylon adds a higher level of abrasion resistance.

**POLARTEC® THERMAL PRO® MICRO GRID/
PEBBLED BACK**

100% polyester / 7.1 oz/yd², 241 g/m²
A mid-weight fleece featuring a grid face and unique pebbled back side texture. Excellent warmth-to-weight ratio and moisture management properties.

POLYDEL MESH™

100% polyester / 2.4oz/yd², 80g/m²
A lightweight, highly air permeable, gridded knit mesh with wicking properties for moisture management.

POLYLAIN™

58% polyester, 42% Merino wool / 4oz/yd², 135g/m²
Our lightest Merino wool jersey knit blend features filament yarn polyester for added strength and moisture management. Merino wool helps keep things comfortable across a wide temperature range and even provides some anti-odour properties.

POWNIC™

face: 85% nylon, 15% elastane, back: 92% polyester, 8% elastane / 9.4 oz/yd², 320g/m²
A softshell with a weather shedding, stretch-woven nylon face fabric bonded to a snug fully brushed polyester fleece. Dot bonding creates a balance between wind resistance and air permeability.

RADCLIFF™

67% polyester, 33% cotton / 5.3 oz/yd², 181g/m²
Hard wearing, mid weight, polyester and cotton woven oxford shirting. Wicking finish to help manage moisture.

RYAN™

92% cotton, 8% wool / 2.7 oz/yd², 92g/m²
A rich, comfortable blend of long staple cotton and wool in a lightweight yarn dye twill weave.

SCHOELLER® DYNAMIC GNS

88% nylon, 12% elastane / 6.4 oz/yd², 180 g/m²
Pound for pound the most durable stretch woven textile in our product line. With a tough, DWR treated outer face to shed moisture, this four-way stretch fabric breathes well and excels in active winter use.

SCHOELLER® KEPROTEC™

88% nylon, 12% Kevlar® / 7.4 oz/yd², 315 g/m²
An extremely abrasion and cut resistant fabric for hard wearing applications.

SHAIDE™

100% polyester / 4.4 oz/yd², 150 g/m²
Midweight knit has a smooth surface that disperses moisture on the outside and has slight interior warmth. Wicking finish assists moisture management. UPF 45 sun protection.

SKYTHA™

100% polyester / 5 oz/yd², 172 g/m²
A mid-weight technical knit with a pique looking face and moisture management properties. HeiQ Pure finish helps minimize odours. UPF 50+ rated for sun protection.

SOCORA™

100% polyester / 3.1 oz/yd², 105 g/m²
Light taffeta weave with 2-way mechanical stretch properties and a DWR finish. Has a UPF 50+ rating for sun protection.

SOLTICA™

55% linen, 45% cotton / 5.5 oz/yd², 186 g/m²
Light and airy woven fabric made with a blend of cotton and linen yarns.

SOLENICE™

100% polyester / 5 oz/yd², 168 g/m²
A lightweight, fleece knit with a smooth face and small back side grids that are comfortable next-to-skin. The mechanical stretch yarns are finished with a moisture wicking finish to promote evaporation. UPF 50+ rating for sun protection.

SUNCORE™

83% polyester, 17% elastane / 6.5 oz/yd², 219 g/m²
French terry knit with wicking finish has a UPF 50+ rating for sun protection. High stretch content with cool, smooth feel that is soft against the skin.

SWEENY™

100% cotton / 8.3 oz/yd², 281 g/m²
Hard wearing water repellent cotton twill fabric with a subtle slub effect.

TANICA™

79% polyester, 21% elastane / 6.6 oz/yd², 227 g/m²
A mid weight polyester and elastane knit with a soft face and lightly brushed back.

TARHA™

63% cotton, 32% nylon, 5% elastane / 3 oz/yd², 104 g/m²
Expect a decent blend of comfort and function from this lightweight stretch-woven fabric. The cotton helps keep it cool in hot conditions, while the nylon 6,6 blend and elastane adds strength and 2-way stretch.

TEPRINE™

100% nylon 6,6 / 1.2 oz/yd², 42 g/m²
This strong, lightweight 20D ripstop taffeta features a high density down-proof construction and nylon 6,6 for tear resistance.

TERRATEX™

94% nylon, 6% elastane / 3.6 oz/yd², 125 g/m²
Made with a plain weave, this comfortable summer fabric has a modicum of stretch and is extremely lightweight, breathable and quick drying. UPF 50+ rating for sun protection.

THISELA™

100% nylon / 0.6 oz/yd², 20 g/m²
A very stable, incredibly lightweight 7D ripstop taffeta that offers an excellent strength-to-weight ratio.

TINTHAN™

100% nylon / 1.9 oz/yd², 46 g/m²
20D mechanical stretch nylon rip stop with an air permeable polyurethane coating and DWR finish. This lightweight stretch fabric has good abrasion resistance for its weight.

TORRENT™

84% polyester, 16% elastane / 5.6 oz/yd², 190 g/m²
Peached face jersey knit textile with brushed surface that is gentle on skin. High stretch properties make it comfortable and pliant. Polygiene® silver salt-based finish keeps garment fresh during repeated use and washings. Excellent durability, breathability and wicking performance.

TRUSARO™

60% nylon, 30% polyester, 10% elastane / 8.0 oz/yd², 272 g/m²
Durable stretch woven nylon face fabric provides rugged weather shedding outer shell, while a smooth polyester knit lining allows for next to skin comfort and easy layering. Dot bonding creates a balance between wind resistance and air permeability.

WOLLARD™

55% wool, 37% polyester, 7% nylon, 1% elastane / 12.4 oz/yd², 420 g/m²
Bonded wool softshell featuring nylon reinforced wool that is bonded to a plush polyester fleece liner. Dot lamination process provides medium wind resistance.

WORSK™

74% cotton, 26% polyester / 4.9 oz/yd², 166 g/m²
Brushed flannel shirting that offers both comfort and warmth.

WYE™

78% cotton, 22% polyester / 2.8 oz/yd², 95 g/m²
Plain weave yarn dyed cotton stretch polyester, light and durable with comfort stretch. Easy care, wash and wear textile.

VIENTE™

100% polyester / 4.1 oz/yd², 140 g/m²
Lightweight air permeable knit mesh that has wicking properties for moisture management. Aegis finish treatment helps control odours.

VISTRASAIR

90% polyester, 10% elastane / 6.8 oz/yd², 230 g/m²
High stretch knit fabric with a smooth face and brushed thermal back features enhanced wicking for comfort and thermal efficiency.

UPF RATING

UPF 40 - 50+, Excellent UV-Protection
97 - 99% UV radiation blocked
UPF 25 - 39, Very Good UV-Protection
96 - 97% UV radiation blocked.
UPF 15 - 24, Good UV-Protection
93 - 95% UV radiation blocked.

GORE-TEX®

All GORE products reflect the new brand naming schema implemented by the company to identify their products. The changes in name do not necessarily mean a change in textile.

Prefixes are an Arc'teryx system to identify the face fabrics applied to GORE technologies. Each element describes a property that defines the nature of the fabric.

N (nylon)	p (plain weave)	r (rip-stop)
P (polyester)	s (stretch)	mr (mini-ripstop)
## (denier)	f (faillie)	k (knit)

GORE-TEX PRO®

Arc'teryx GORE-TEX® Pro garments provide the highest level of durable waterproof/breathable performance available. GORE® Micro Grid Woven Backer delivers garments that are consistently the lightest and most compact in the industry. GORE-TEX® Pro has a sparsely woven nylon backer that is twice as durable as traditional tricot liners and allows moisture vapour to pass quickly through to the GORE-TEX® membrane.

N70p GORE-TEX® PRO 3L

100% nylon / 3.9 oz/yd², 142 g/m²
A light weight and soft feeling textile. The tightly woven construction features a plain weave with textured false twist fill yarns. Highly abrasion resistant for its weight and soft hand. Durable woven backer and DWR finish.

N40r-X GORE-TEX® PRO 3L

100% nylon / 4.2 oz/yd², 140 g/m²
Custom developed with W.L. Gore and exclusive to Arc'teryx, N40r-X features exceptional strength-to-weight ratio. Its carefully selected yarns and dense construction limit fibre breakage under abrasion providing long lasting snow and water shedding capabilities.

N40p-X GORE-TEX® PRO 3L

100% nylon / 3.2 oz/yd², 109 g/m²
A high tenacity nylon face fabric with a flat filament warp yarn and false twist textured fill yarn, backed with a micro-grid woven backer. This fabric is lightweight, durable, and has excellent water repellency. DWR finish.

N80p-X GORE-TEX® PRO 3L

100% nylon / 4.4 oz/yd², 150 g/m²
Developed in conjunction with W.L. GORE, a project five years in the making results in an exceptionally durable plain weave nylon face with high resistance to abrasion. Dense construction minimizes the exposure of yarns to abrasive contact, reducing damage to filaments and maintaining surface integrity. A durable micro-grid woven backer reduces weight and is also highly abrasion resistant. DWR finish.

N155p-X GORE-TEX® PRO 3L

100% nylon / 6.0 oz/yd², 205 g/m²
Exclusive to Arc'teryx and engineered for high impact and abrasion resistance, this fabric plies together multiple yarns in an Ottoman weave for maximum bulk, ruggedness and durability.

GORE-TEX®

All GORE products reflect the new brand naming schema implemented by the company to identify their products. The changes in name do not necessarily mean a change in textile.

GORE-TEX® WITH PACLITE TECHNOLOGY

The lightest, most packable fabric from GORE-TEX®. Designed for those seeking emergency protection from inclement weather.

N70p GORE-TEX® 2L

100% nylon / 3.4 oz/yd², 109 g/m²
A tightly constructed plain weave nylon face with false twist textured warp and fill yarns. DWR finish.

N40p-X GORE-TEX® 2L

100% nylon / 2.5 oz/yd², 109 g/m²
A tightly constructed plain weave nylon face with false twist textured warp and fill yarns and a micro-grid woven backer. This fabric is lightweight, durable, and has excellent water repellency.

N150p-X GORE-TEX® FABRIC WITH 2L PACLITE PRODUCT TECHNOLOGY

100% nylon / 2.3 oz/yd², 145 g/m²
A durable plain weave nylon fabric with a flat filament warp and false twist fill. Light and packable yet highly abrasion resistant. DWR finish.

N40s GORE-TEX® FABRIC WITH 3L LO-LOFT SOFT SHELL CONSTRUCTION

53% nylon, 43% polyester, 4% elastane / 5.2 oz/yd², 178 g/m²
A durable, stretch plain weave face fabric with a lightly brushed polyester liner.

N40r GORE-TEX® FABRIC WITH 2L PACLITE PRODUCT TECHNOLOGY

2 layer fabric: 3.4 oz/yd², 114 g/m²
A lightweight nylon fabric with a mini ripstop construction for increased tear strength and durability. DWR finish.

N70p GORE-TEX® FABRIC WITH 3L LO-LOFT SOFT SHELL CONSTRUCTION

3 layer fabric: 5.1 oz/yd², 174 g/m²
Durable nylon plain weave outer face with a moisture wicking brushed-knit polyester liner. DWR finish.

N80p-X GORE-TEX® FABRIC WITH 3L LO-LOFT SOFT SHELL CONSTRUCTION

3 layer fabric: 5.7 oz/yd², 193 g/m²
Developed in conjunction with GORE®, a project five years in the making results in an exceptionally durable plain weave nylon face with high resistance to abrasion. Dense construction minimizes the exposure of yarns to abrasive contact, reducing damage to filaments and maintaining surface integrity. Warm, moisture wicking polyester flannel backer. DWR finish.

P75d GORE-TEX® 2L

100% polyester / 5.4 oz/yd², 183 g/m²
A distinctively textured surface & soft cottony hand make this durable polyester face one of our most inviting and wearable textiles. DWR finish.

N40p GORE-TEX® FABRIC WITH 3L TRICOT TECHNOLOGY

100% nylon face / 2.2 oz/yd², 126 g/m²
A durable plain weave face fabric that uses a textured warp yarn and a false twist textured fill yarn, backed with a polyester knit fabric for comfort.

N42p GORE-TEX FABRIC WITH 3L TRICOT TECHNOLOGY

Face 100% Nylon / Backer 100% Polyester / 4.2 oz/yd², 143 g/m²
Nylon fabric utilizes two different textured Nylon yarns to create a durable face with a soft, quiet hand and a subtle surface luster. Polyester tricot backer, provides next to skin comfort.

N150p-X GORE-TEX FABRIC WITH 3L TRICOT TECHNOLOGY

100% nylon / 5.3 oz/yd², 180 g/m²
a durable plain weave nylon fabric with a flat filament warp and false twist fill. polyester tricot backer, provides next to skin comfort.

WINDSTOPPER®

N40p WINDSTOPPER® 2L

100% nylon face / 2.2oz/yd², 75g/m²

N40p face fabric bonded to WINDSTOPPER® membrane used in insulated garment applications.

P50p WINDSTOPPER® 2L

100% polyester / 2.4oz/yd², 83g/m²

A lightweight, plain weave textile with a smooth polyester outer face for moisture shedding, and a breathable WINDSTOPPER® membrane for active use in windy conditions.

P50k WINDSTOPPER® 3L

100% polyester / 6.5oz/yd², 222g/m²

Polyester knit face with 2 way stretch, paired with a soft knit backer for next-to-skin comfort.

N80p-X WINDSTOPPER® 2L

100% nylon / 3.4oz/yd², 114g/m²

Uses the same exceptionally durable plain weave nylon face used in our N80p-X GORE-TEX® Pro fabrics. Dense construction minimizes the exposure of yarns to abrasive contact, reducing damage to filaments and maintaining surface integrity. Highly resistant to abrasion, blocks wind. DWR finish.

N70p WINDSTOPPER® 2L

100% nylon / 3oz/yd², 101g/m²

A 2-layer plain weave nylon with a textured face and a DWR finish.

N70p WINDSTOPPER® 3L (HI-LOFT)

68% polyester, 34% nylon / 7.8oz/yd², 267g/m²

A plain weave nylon faced WINDSTOPPER® textile with a micro check backer.